

Accountable Property North Zoom

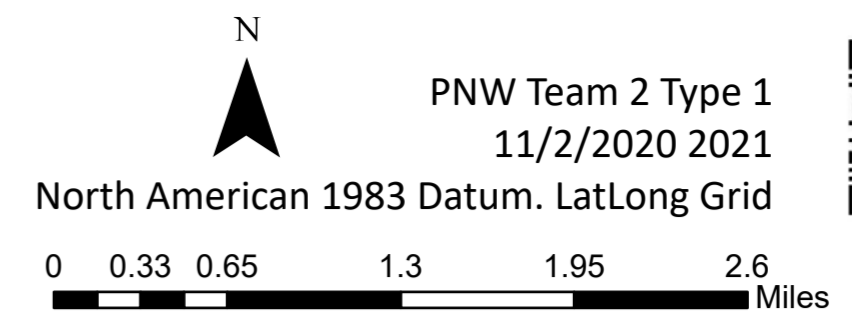
Cameron Peak
CO-ARF-000636
11/03/2020

Thompson Zone
WY-MRF-000408
11/03/2020

208,913 acres at MMA
Perimeter 11/02/2020 @ 1340
(MMA + IR)

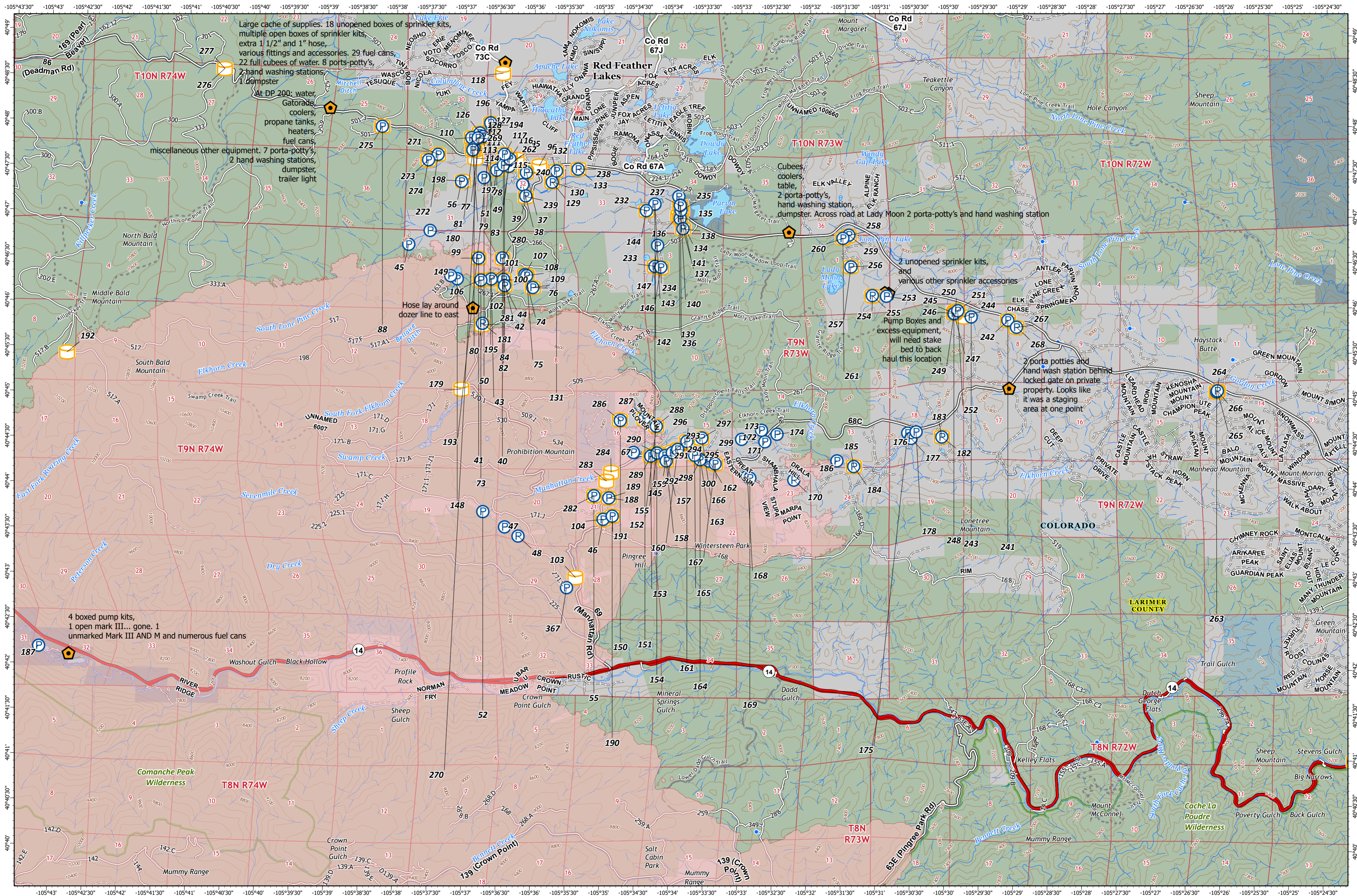
4,889 acres at MMA Perimeter
11/02/2020 @ 1317 (MMA +
IR)

- Aerial Hazard
- Aerial Ignition
- Airstrip or Airport
- Bridge
- Camp
- Clean Up Area
- Closure
- Culvert
- Dip Site
- Drop Point
- Dozer Push
- Fence - Cut/Damaged
- Fire Origin
- Fire Station
- First Aid Station
- Gate
- Hazard



PNW Team 2 Type 1
11/2/2020 2021

North American 1983 Datum. LatLong Grid



Large cache of supplies. 18 unopened boxes of sprinkler kits, multiple open boxes of sprinkler kits, extra 1 1/2" and 1" hose, various fittings and accessories. 29 fuel cans, 22 full cubees of water. 8 ports-potty's, 2 hand washing stations, 1 dumpster

At DP 200: water, Gatorade, coolers, propane tanks, heaters, fuel cans, miscellaneous other equipment. 7 porta-potty's, 2 hand washing stations, dumpster, trailer light

Cubees, coolers, table, 2 porta-potty's, hand washing station, dumpster. Across road at Lady Moon 2 porta-potty's and hand washing station

2 unopened sprinkler kits, and various other sprinkler accessories

2 porta potties and hand wash station behind locked gate on private property. Looks like it was a staging area at one point

4 boxed pump kits, 1 open mark III... gone. 1 unmarked Mark III AND M and numerous fuel cans

Washout Gulch Black Hollow

Comanche Peak Wilderness

LARIMER COUNTY

Cache La Poudre Wilderness