

Medical Evacuation

11/03/2020

Cameron Peak

CO-ARF-000636

208,913 acres at MMA Perimeter

11/02/2020 @ 1340 MMA Perimeter

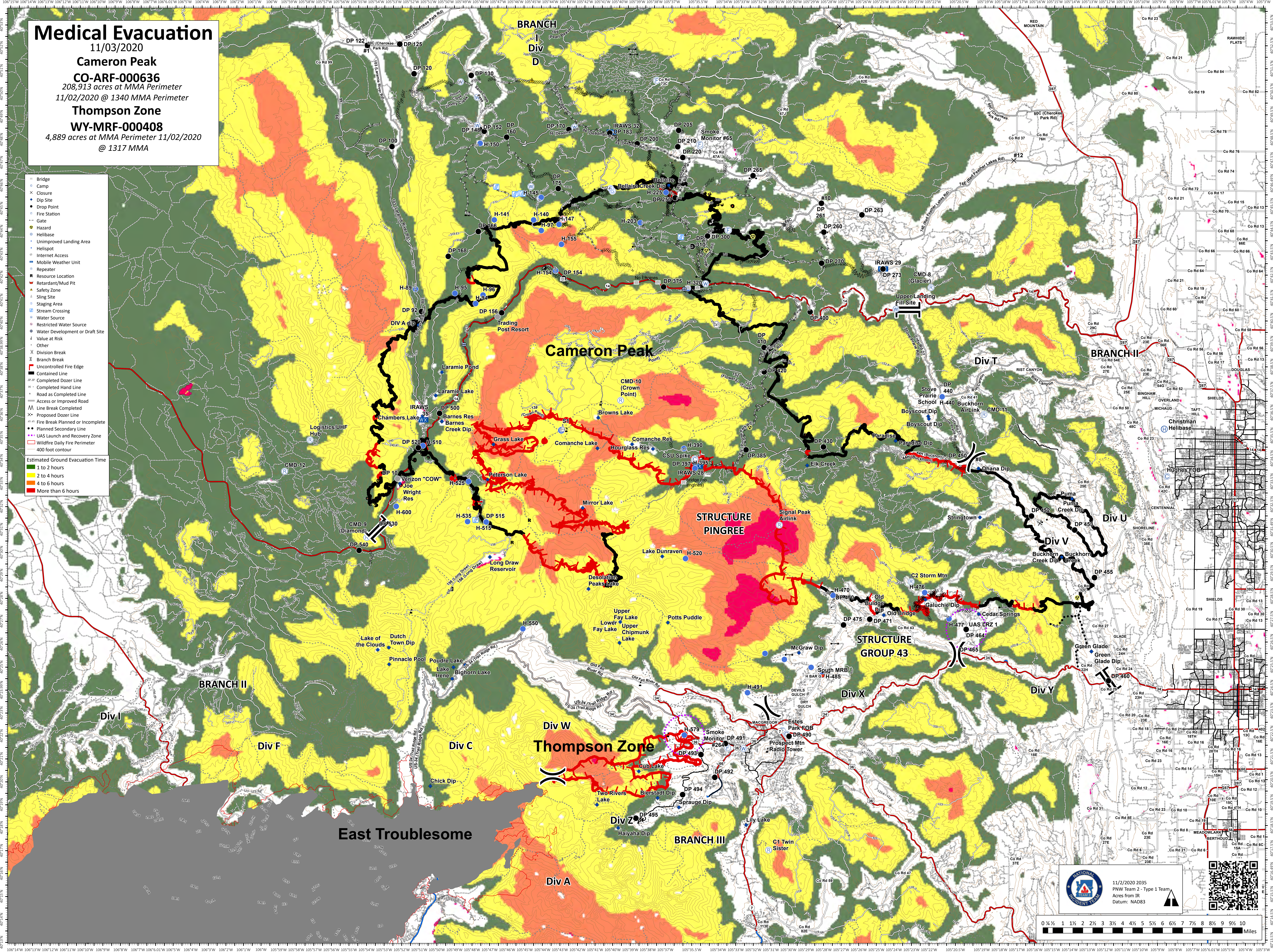
Thompson Zone

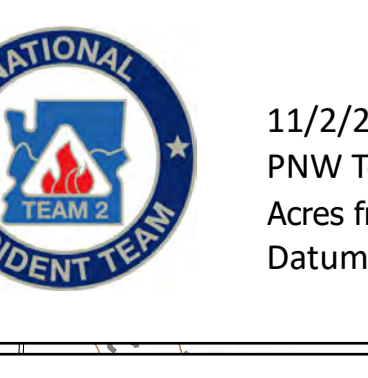
WY-MRF-000408

4,889 acres at MMA Perimeter 11/02/2020

@ 1317 MMA

- Bridge
 - Camp
 - Closure
 - Dip Site
 - Drop Point
 - Fire Station
 - Gate
 - Hazard
 - Helibase
 - Unimproved Landing Area
 - Helispot
 - Internet Access
 - Mobile Weather Unit
 - Repeater
 - Resource Location
 - Retardant/Mud Pit
 - Safety Zone
 - Staging Area
 - Stream Crossing
 - Water Source
 - Restricted Water Source
 - Water Development or Draft Site
 - Value at Risk
 - Other
 - Division Break
 - Branch Break
 - Uncontrolled Fire Edge
 - Contained Line
 - Completed Dozer Line
 - Completed Hand Line
 - Road as Completed Line
 - Access or Improved Road
 - Line Break Completed
 - Proposed Dozer Line
 - Fire Break Planned or Incomplete
 - Planned Secondary Line
 - UAS Launch and Recovery Zone
 - Wildfire Daily Fire Perimeter
 - 400 foot contour
- Estimated Ground Evacuation Time
- 1 to 2 hours
 - 2 to 4 hours
 - 4 to 6 hours
 - More than 6 hours



 11/7/2020 2035
PNW Team 2 - Type 1 Team
Acres from IR
Datum: NAD83

