

Medical Ground Transportation

11/03/2020

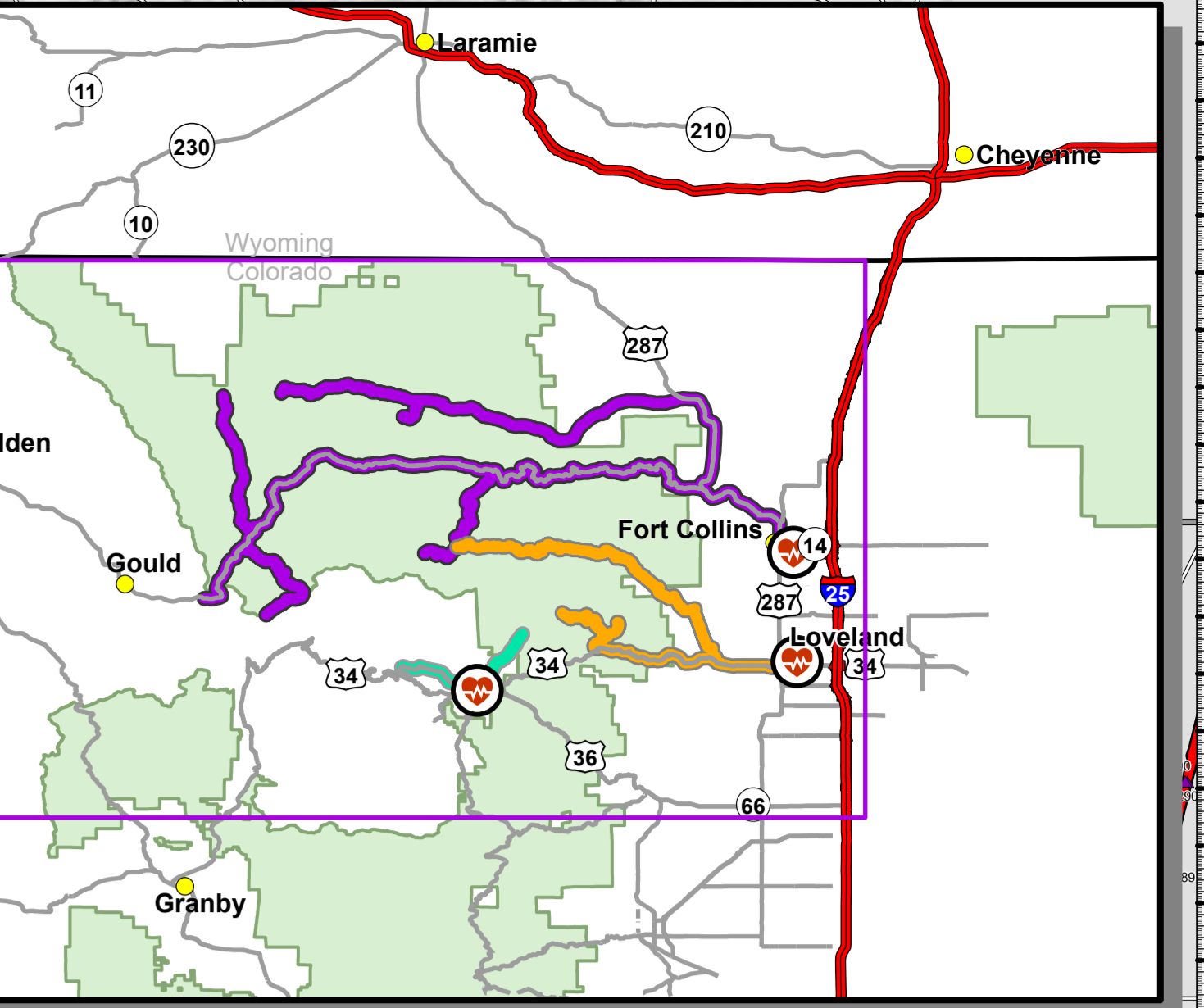
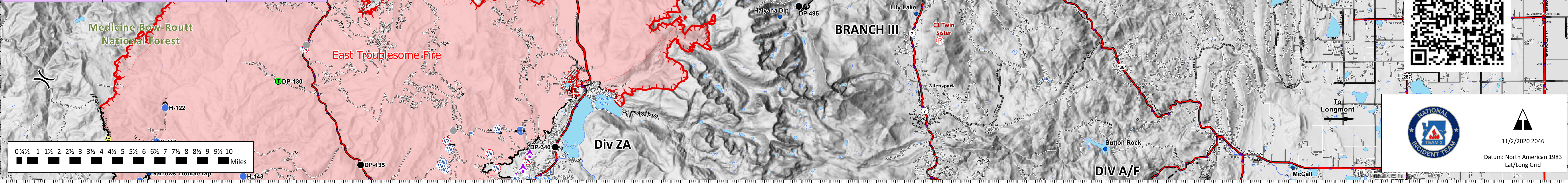
Cameron Peak
CO-ARF-000636
208,913 acres @ MMA
Perimeter 11/02/2020 @ 1340

Thompson Zone
WY-MRF-000408
4,889 acres @ MMA Perimeter
11/02/2020 @ 1317

	Aerial Hazard		Value at Risk
	Bridge		Other
	Camp		Zone Break
	Clean Up Area		Division Break
	Closure		Branch Break
	Culvert		Uncontrolled Fire Edge
	Dip Site		Contained Line
	Drop Point		Completed Dozer Line
	Fire Station		Completed Hand Line
	Gate		Road as Completed Line
	Hazard		Access or Improved Road
	Helibase		Line Break Completed
	Unimproved Landing Area		Fire Break Planned or Incomplete
	Helispot		Planned Fire Line
	Incident Command Post		Aerial Retardant Drop
	Internet Access		UAS Launch and Recovery Zone
	Lookout		Repair Line
	Mobile Weather Unit		Road Repair
	Resource Location		Wildfire Daily Fire Perimeter
	Retardant/Mud Pit		US or State Highway
	Safety Zone		Primary or County Road
	Sling Site		Arterial or Collector Road
	Staging Area		Minor or Local Road
	Stream Crossing		Highway Mile Marker
	Water Source		
	Restricted Water Source		
	Water Development or Draft Site		

	Estes Park Medical Center		Hospital
	McKee Medical Center		Ambulance Transfer
	Poudre Valley Hospital		

LocationName	DestinationHospital	ETA to Hospital
DP 475	Estes Park Medical Center	19 min
Old Fall River Rd	Estes Park Medical Center	22 min
LocationName	DestinationHospital	ETA to Hospital
Ambulance Transfer: Loveland	McKee Medical Center	30 min
Cedar Park	McKee Medical Center	45 min
DP 385	McKee Medical Center	1 hr 23 min
DP 430	McKee Medical Center	1 hr 15 min
Storm Mountain	McKee Medical Center	45 min
LocationName	DestinationHospital	ETA to Hospital
156 Long Draw Rd	Poudre Valley Hospital	2 hrs 10 min
Ambulance Transfer: Fort Collins	Poudre Valley Hospital	55 min
Ambulance Transfer: Loveland	Poudre Valley Hospital	33 min
CSU Mountain Campus	Poudre Valley Hospital	1 hr 45 min
DP 170	Poudre Valley Hospital	1 hr 13 min
DP 540	Poudre Valley Hospital	1 hr 50 min
Foxtrot Spike	Poudre Valley Hospital	1 hr 33 min
Romeo Spike	Poudre Valley Hospital	1 hr 8 min
Stub Creek Work Center	Poudre Valley Hospital	2 hr 20 min



Poudre Valley Hospital

McKee Medical Center

Estes Park Medical Center

