

Ops South

11/03/20

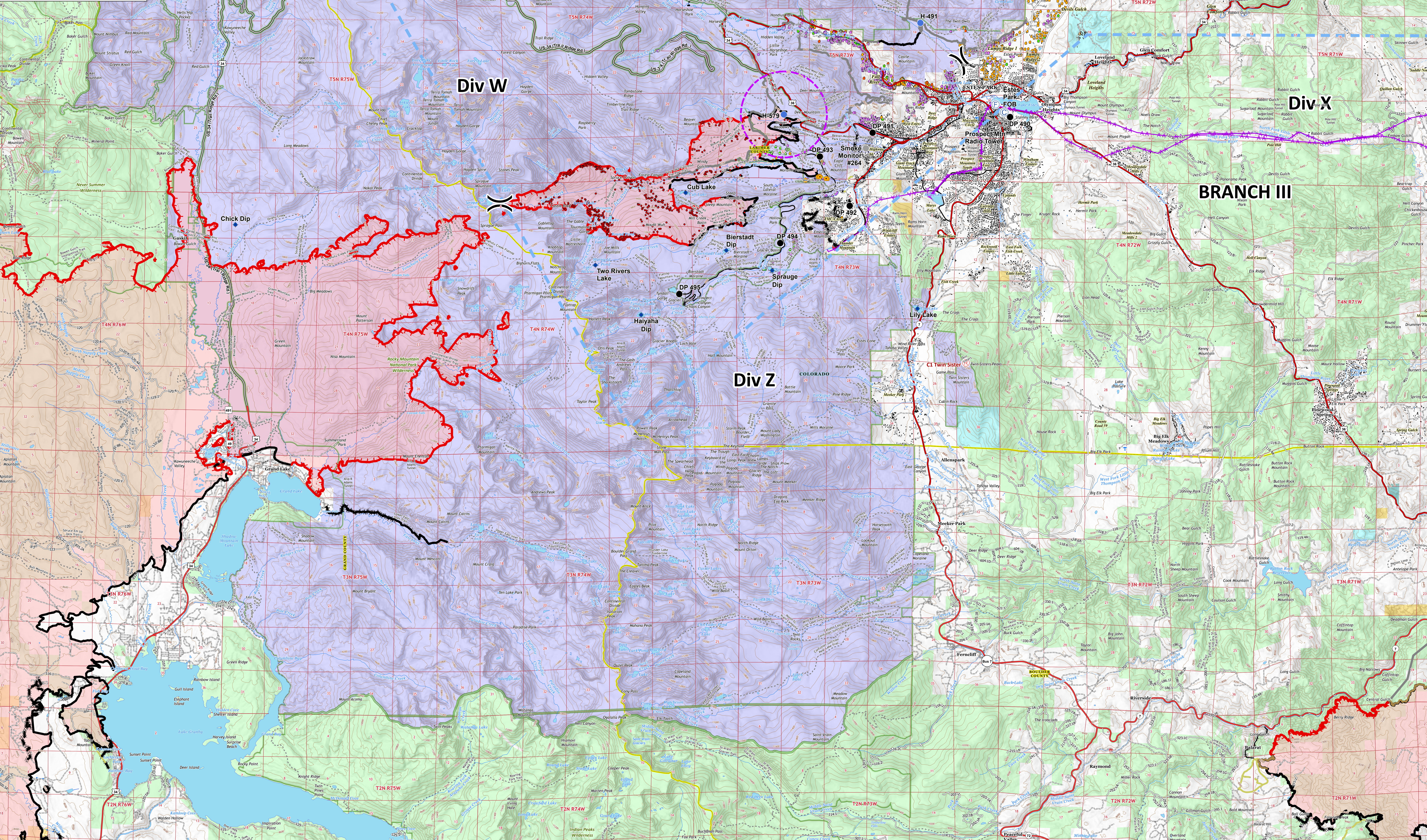
Cameron Peak CO-ARF-000636


MMA Perimeter 11/02/20 @ 1340 208,913 ac.



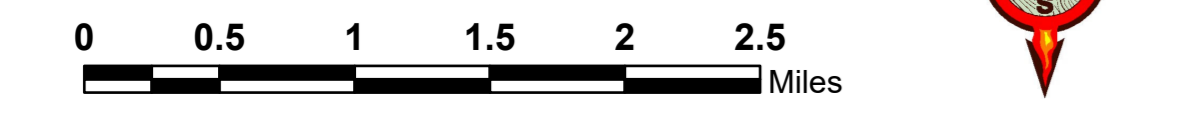
Thompson Zone WY-MRF-000408

MMA Perimeter 11/02/20 @ 1317 4,889 ac.

- Repeater
- Camp
- Dip Site
- Drop Point
- Fire Station
- Gate
- Helispot
- Internet Access
- Repeater
- Retardant/Mud Pit
- Water Source
- Value at Risk
- Other
- Division Break
- Contained Line
- Completed Dozer Line
- Completed Hand Line
- Road as Completed Line
- Uncontrolled Fire Edge
- Access or Improved Road
- Line Break Completed
- Completed Burnout
- UAS Launch and Recovery Zone
- WAPA Transmission Lines
- Wildfire Daily Fire Perimeter
- Structure Triage
 - Defensible - Stand Alone
 - Defensible - Prep and Hold
 - Non-Defensible - Prep and Leave
 - Non-Defensible - Rescue Drive-By
 - Unknown
 - MMA Isolated Heat



 PNW2
11/2/2020 2202
Datum: North American 1983



105°56'W 105°54'W 105°52'W 105°50'W 105°48'W 105°46'W 105°44'W 105°42'W 105°40'W 105°38'W 105°36'01'W 105°34'W 105°32'W 105°30'W 105°28'W 105°26'W 105°24'W 105°22'W 105°20'W