

Thompson Zone

11/03/20

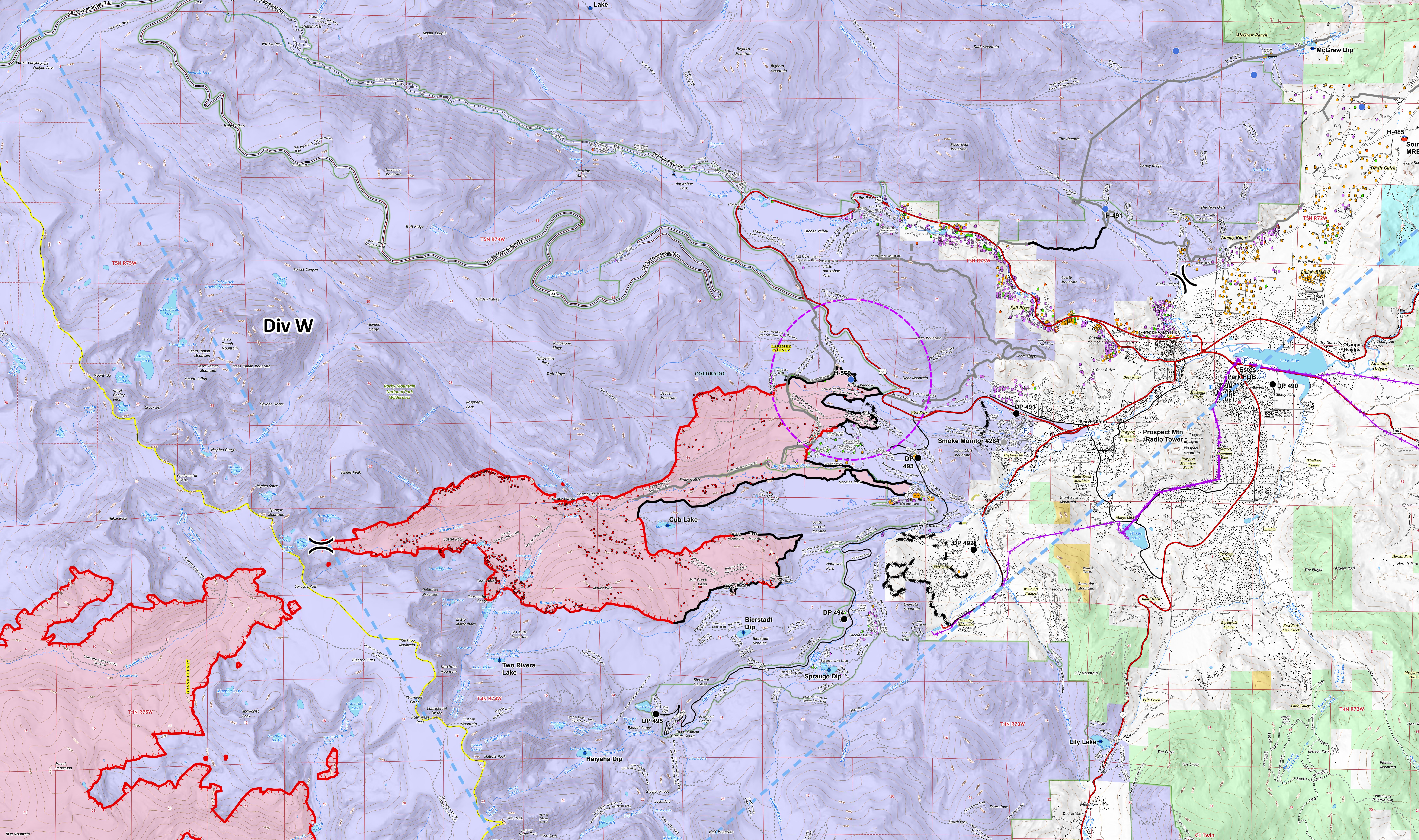
Cameron Peak CO-ARF-000636


MMA Perimeter 11/02/20 @ 1340 208,913 ac.

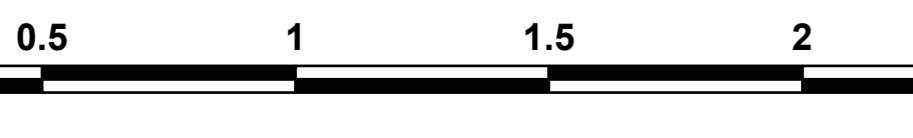

Thompson Zone WY-MRF-000408

MMA Perimeter 11/02/20 @ 1317 4,889 ac.

- Repeater
- Camp
- Dip Site
- Drop Point
- Fire Station
- Gate
- Hellspot
- Internet Access
- Repeater
- Retardant/Mud Pit
- Water Source
- Value at Risk
- Other
- Division Break
- Contained Line
- Completed Dozer Line
- Completed Hand Line
- Road as Completed Line
- Uncontrolled Fire Edge
- Access or Improved Road
- UAS Launch and Recovery Zone
- WAPA Transmission Lines
- Wildfire Daily Fire Perimeter
- Structure Triage
 - Defensible - Stand Alone
 - Defensible - Prep and Hold
 - Non-Defensible - Prep and Leave
 - Non-Defensible - Rescue Drive-By
 - Unknown
 - MMA Isolated Heat



 PNW2
11/2/2020 2205
Datum: North American 1983



USGS National Map Information Program (NIP)
1:50,000 Scale
County Road 59