

Operations East

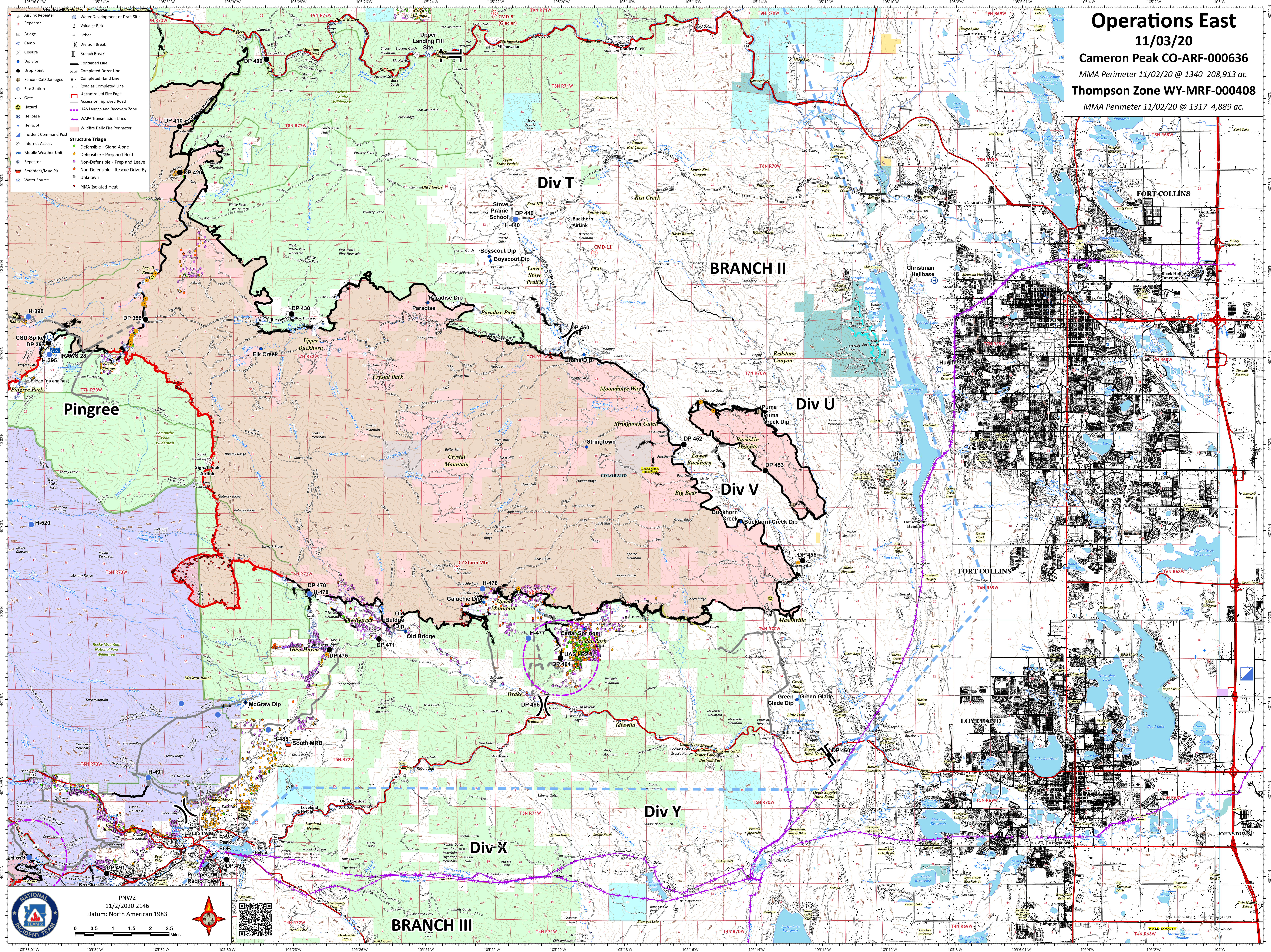
11/03/20

Cameron Peak CO-ARF-000636

MMA Perimeter 11/02/20 @ 1340 208,913 ac.

Thompson Zone WY-MRF-000408

MMA Perimeter 11/02/20 @ 1317 4,889 ac.



- AirLink Repeater
- Repeater
- Bridge
- Camp
- Closure
- Dip Site
- Drop Point
- Fence - Cut/Damaged
- Fire Station
- Gate
- Hazard
- Helibase
- Helispot
- Incident Command Post
- Internet Access
- Mobile Weather Unit
- Repeater
- Retardant/Mud Pit
- Water Source
- Water Development or Draft Site
- Value at Risk
- Other
- Division Break
- Branch Break
- Completed Doser Line
- Fence - Completed Line
- Uncontrolled Fire Edge
- Access or Improved Road
- UAS Launch and Recovery Zone
- WAPA Transmission Lines
- Wildfire Daily Fire Perimeter
- Structure Triage
- Defensible - Stand Alone
- Defensible - Prep and Hold
- Non-Defensible - Prep and Leave
- Non-Defensible - Rescue Drive-By
- Unknown
- MMA Isolated Heat

NATIONAL INCIDENT TEAM

PNW2
11/2/2020 2146
Datum: North American 1983

0 0.5 1 1.5 2 Miles

WELD COUNTY