

Operations North

11/04/2020

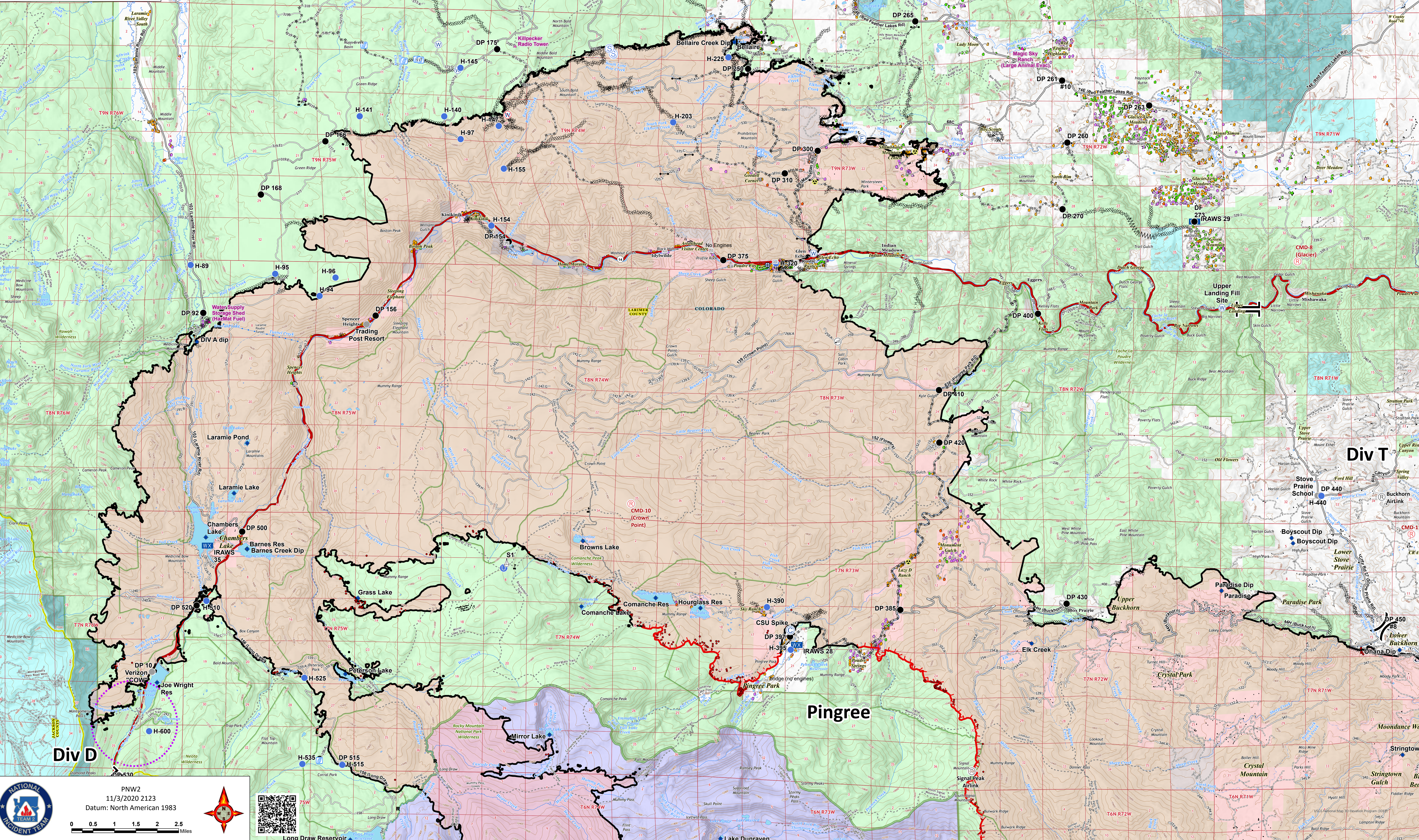
Cameron Peak CO-ARF-000636

208,913 acres from MMA Perimeter 11/03/2020 @ 1504

Thompson Zone WY-MRF-000408

4,897 acres from MMA Perimeter 11/03/2020 @ 1520

- AirLink Repeater
- Repeater
- Bridge
- Camp
- Closure
- Dip Site
- Drop Point
- Fence - Cut/Damaged
- Fire Station
- Gate
- Hazard
- Unimproved Landing Area
- Helispot
- Internet Access
- Mobile Weather Unit
- Repeater
- Resource Location
- Safety Zone
- Sling Site
- Staging Area
- Stream Crossing
- Water Source
- Restricted Water Source
- Water Development or Draft Site
- Value at Risk
- Other
- Division Break
- Branch Break
- Contained Line
- Completed Dozer Line
- Completed Hand Line
- Road as Completed Line
- Uncontrolled Fire Edge
- Access or Improved Road
- Line Break Completed
- Wildfire Daily Fire Perimeter
- Structure Triage
 - Defensible - Stand Alone
 - Defensible - Prep and Hold
 - Non-Defensible - Prep and Leave
 - Non-Defensible - Rescue Drive-By
 - Unknown



PNW2
11/3/2020 2123
Datum: North American 1983



USGS National Map 10 DataWeb Program 10/09/17
© 2017 USGS
Lampson Ridge