

Thompson Zone

11/04/2020

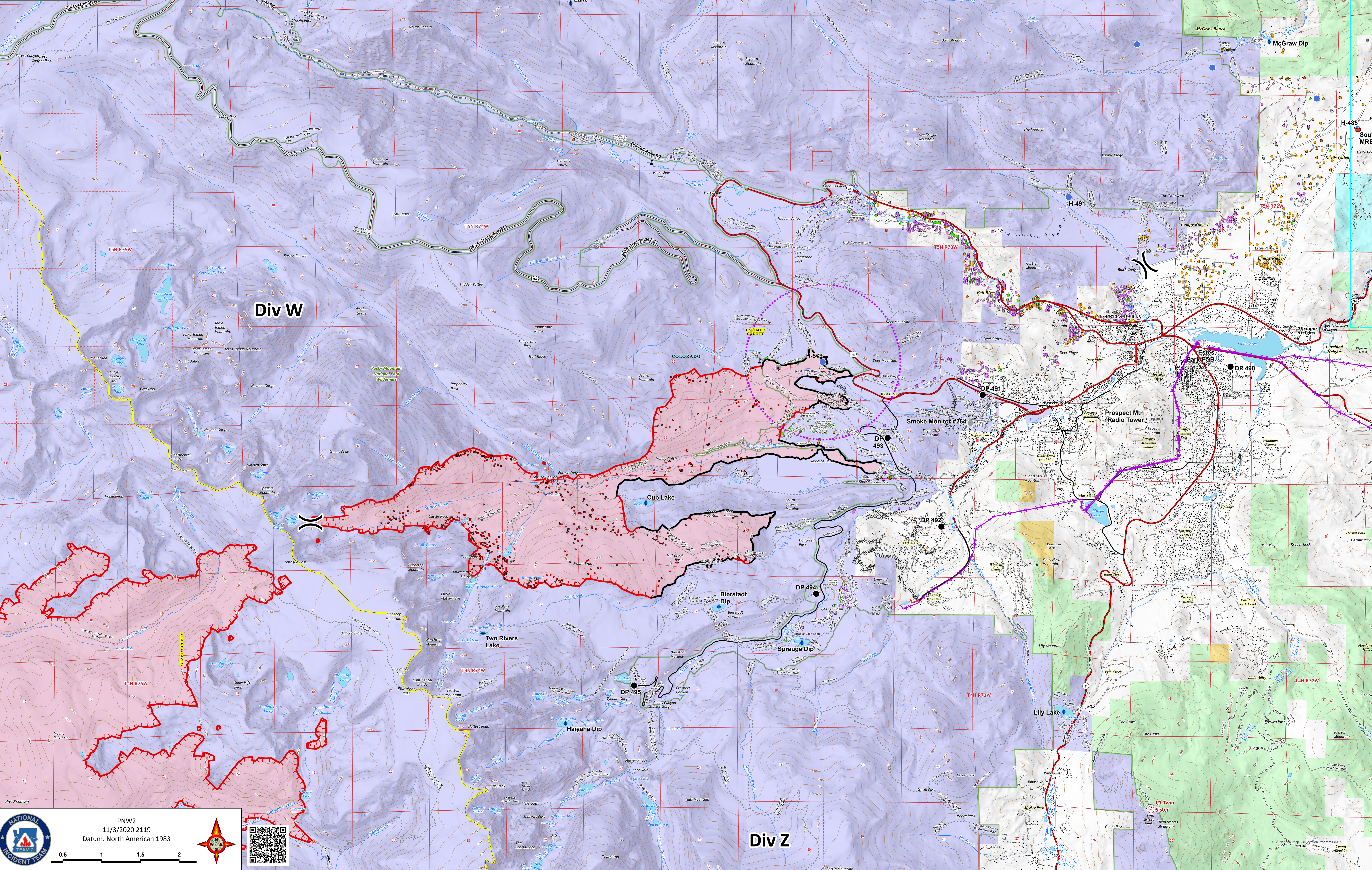
Cameron Peak CO-ARF-000636


208,913 acres from MMA Perimeter 11/03/2020 @ 1504




Thompson Zone WY-MRF-000408

4,897 acres from MMA Perimeter 11/03/2020 @ 1520

- Repeater
 - Bridge
 - Camp
 - Dip Site
 - Drop Point
 - Fire Station
 - Gate
 - Hellspot
 - Internet Access
 - Repeater
 - Retardant/Mud Pit
 - Water Source
 - Value at Risk
 - Other
 - Division Break
 - Contained Line
 - Completed Dozer Line
 - Completed Hand Line
 - Road as Completed Line
 - Uncontrolled Fire Edge
 - Access or Improved Road
 - UAS Launch and Recovery Zone
 - WAPA Transmission Lines
 - Wildfire Daily Fire Perimeter
- ### Structure Triage
- Defensible - Stand Alone
 - Defensible - Prep and Hold
 - Non-Defensible - Prep and Leave
 - Non-Defensible - Rescue Drive-by
 - Unknown
 - MMA Isolated Heat



 PNW2
11/3/2020 2119
Datum: North American 1983



USGS National Map Information Program (NIP)
1:50,000
County Road 59