

# Thompson Zone

11/04/2020

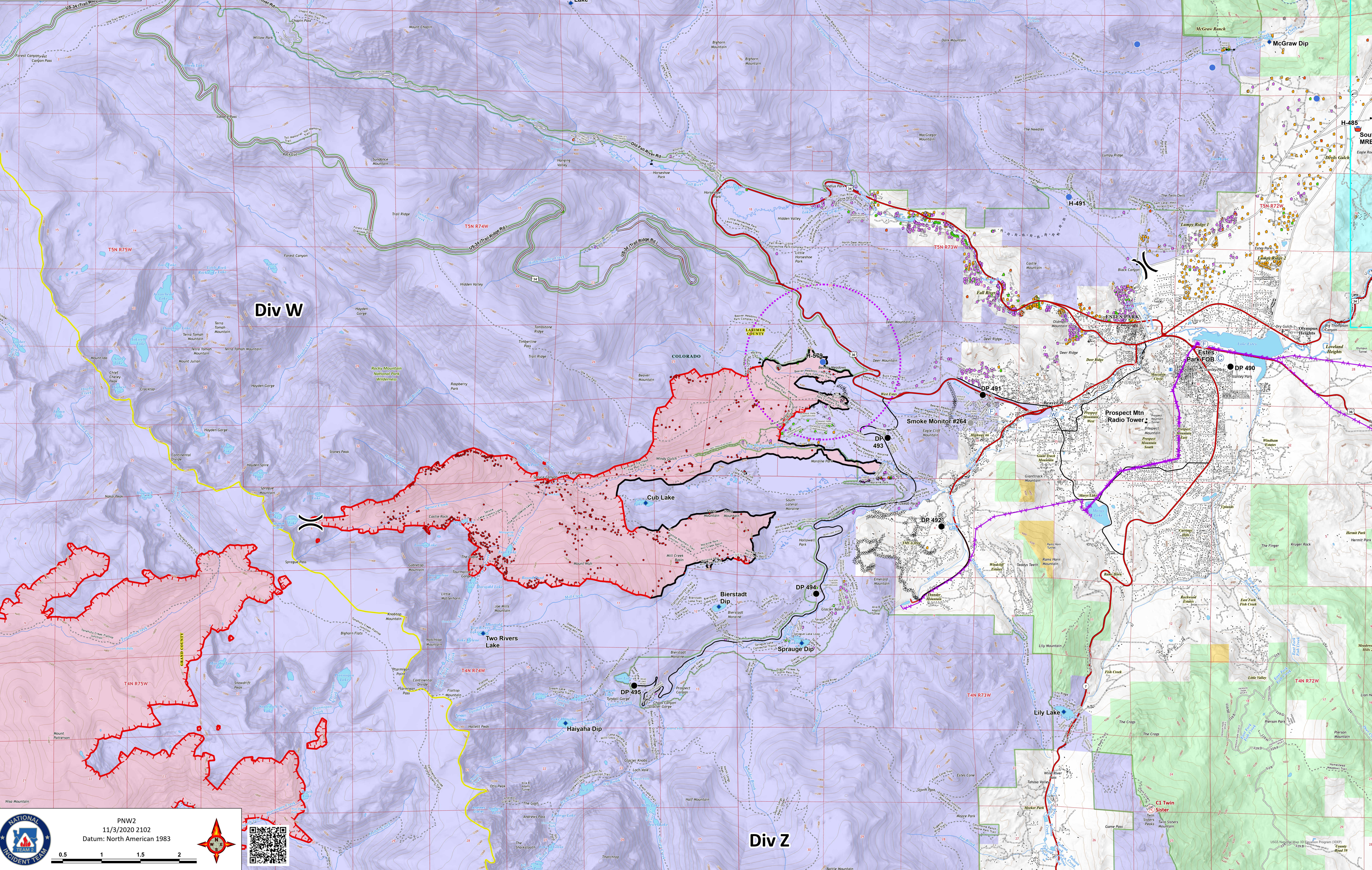
Cameron Peak CO-ARF-000636

208,913 acres from MMA Perimeter 11/03/2020 @ 1504

Thompson Zone WY-MRF-000408

4,897 acres from MMA Perimeter 11/03/2020 @ 1520

- Repeater
  - Bridge
  - Camp
  - Dip Site
  - Drop Point
  - Fire Station
  - Gate
  - Hellspot
  - Internet Access
  - Repeater
  - Retardant/Mud Pit
  - Water Source
  - Value at Risk
  - Other
  - Division Break
  - Contained Line
  - Completed Dozer Line
  - Completed Hand Line
  - Road as Completed Line
  - Uncontrolled Fire Edge
  - Access or Improved Road
  - UAS Launch and Recovery Zone
  - WAPA Transmission Lines
  - Wildfire Daily Fire Perimeter
- ### Structure Triage
- Defensible - Stand Alone
  - Defensible - Prep and Hold
  - Non-Defensible - Prep and Hold
  - Non-Defensible - Prep and Leave
  - Non-Defensible - Rescue Drive-By
  - Unknown
  - MMA Isolated Heat



**NATIONAL INCIDENT TEAM**

PNW2  
11/3/2020 2102  
Datum: North American 1983

Scale: 0.5, 1, 1.5, 2

USGS National Map Information Program (NMIP)  
© 2019