

# Medical Evacuation

11/05/2020

## Cameron Peak

### CO-ARF-000636

208,913 acres at MMA Perimeter

11/03/2020 @ 1504 MMA Perimeter

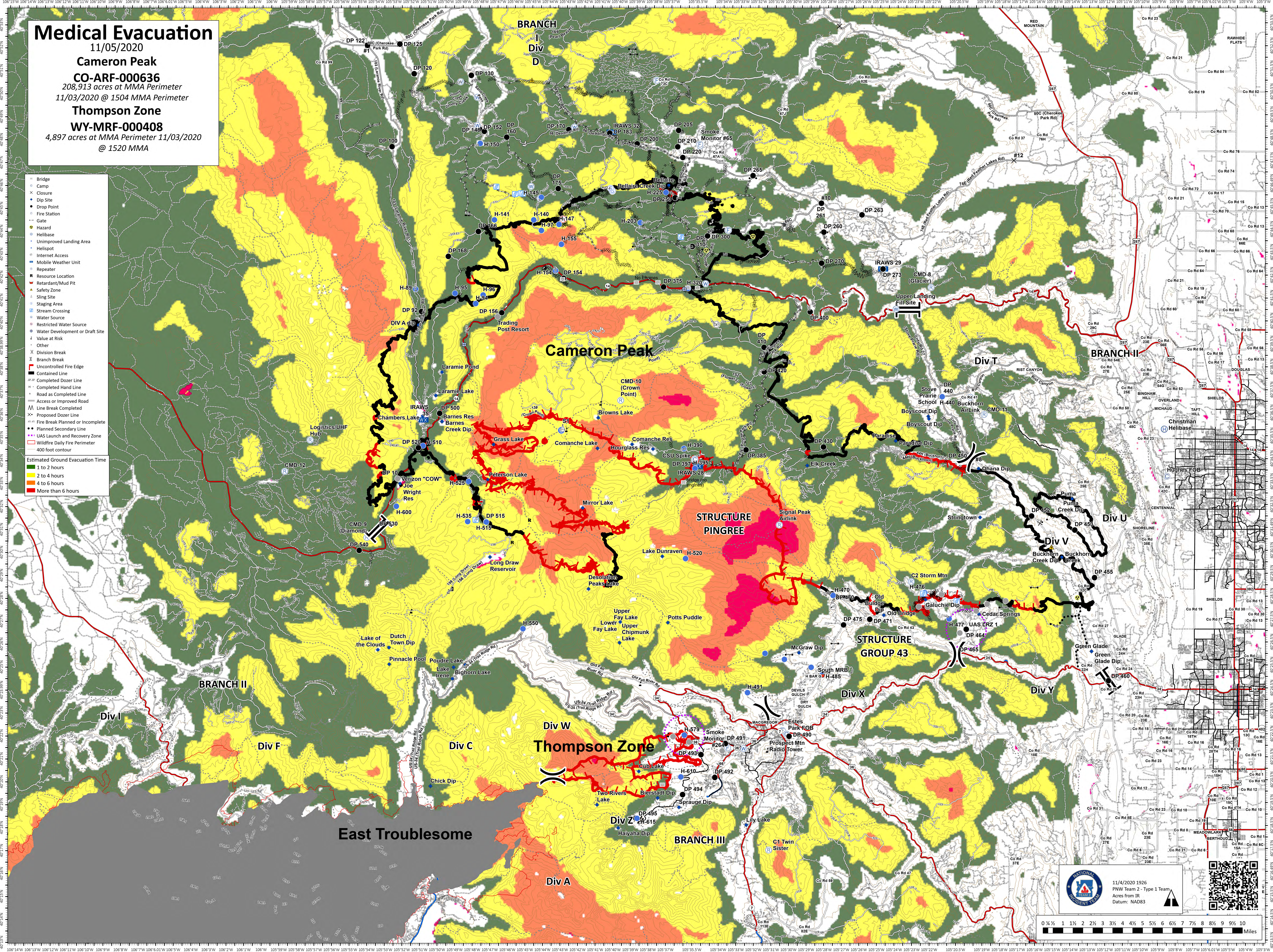
### Thompson Zone

### WY-MRF-000408

4,897 acres at MMA Perimeter 11/03/2020

@ 1520 MMA

- Bridge
  - Camp
  - Closure
  - Dip Site
  - Drop Point
  - Fire Station
  - Gate
  - Hazard
  - Helibase
  - Unimproved Landing Area
  - Helispot
  - Internet Access
  - Mobile Weather Unit
  - Repeater
  - Resource Location
  - Retardant/Mud Pit
  - Safety Zone
  - Sling Site
  - Staging Area
  - Stream Crossing
  - Water Source
  - Restricted Water Source
  - Water Development or Draft Site
  - Value at Risk
  - Other
  - Division Break
  - Branch Break
  - Uncontrolled Fire Edge
  - Contained Line
  - Completed Dozer Line
  - Completed Hand Line
  - Road as Completed Line
  - Access or Improved Road
  - Line Break Completed
  - Proposed Dozer Line
  - Proposed Hand Line
  - Fire Break Planned or Incomplete
  - Planned Secondary Line
  - UAS Launch and Recovery Zone
  - Wildfire Daily Fire Perimeter
  - 400 foot contour
- Estimated Ground Evacuation Time**
- 1 to 2 hours
  - 2 to 4 hours
  - 4 to 6 hours
  - More than 6 hours



11/4/2020 1926  
PNW Team 2 - Type 1 Team  
Acres from IR  
Datum: NAD83