

Operations East

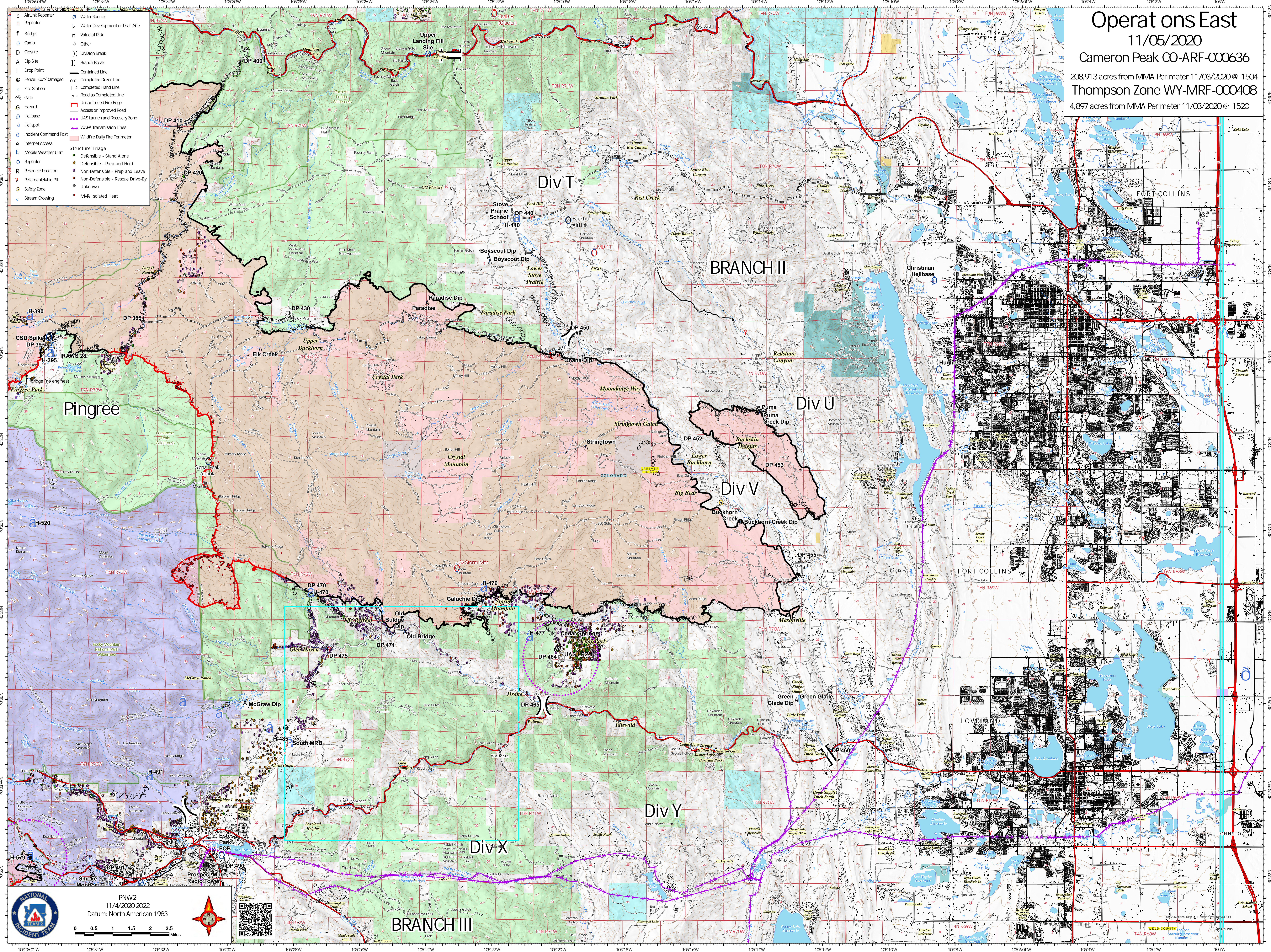
11/05/2020

Cameron Peak CO-ARF-000636

208,913 acres from MMA Perimeter 11/03/2020 @ 1504

Thompson Zone WY-MRF-000408

4,897 acres from MMA Perimeter 11/03/2020 @ 1520



- o AirLink Repeater
- o Repeater
- f Bridge
- D Camp
- D Closure
- A Dip Site
- I Drop Point
- @ Fence - Out/Damaged
- x Fire Station
- Gate
- G Hazard
- o Helibase
- o Helispot
- o Incident Command Post
- o Internet Access
- E Mobile Weather Unit
- o Repeater
- R Resource Locat on
- o Retardant/Mud Pt
- o Safety Zone
- o Stream Crossing
- o Water Source
- o Water Development or Draf. Site
- n Value at Risk
- o Other
-) Division Break
- [Branch Break
- o Contained Line
- o Completed Dozer Line
- o Road as Completed Line
- o Uncontrolled Fire Edge
- o Access or Improved Road
- o UAS Launch and Recovery Zone
- o WAPA Transmission Lines
- o Wildfire Daily Fire Perimeter
- o Structure Triage
- o Defensive - Stand Alone
- o Defensive - Prep and Hold
- o Non-Defensible - Prep and Leave
- o Non-Defensible - Rescue Drive-By
- o Unknown
- o MVA Isolated Heat

NATIONAL INCIDENT TEAM

PNW2
11/4/2020 2022
Datum: North American 1983

0 0.5 1 1.5 2 Miles

WELD COUNTY
STANDARD COLOR NUMBER 2