

Operations East

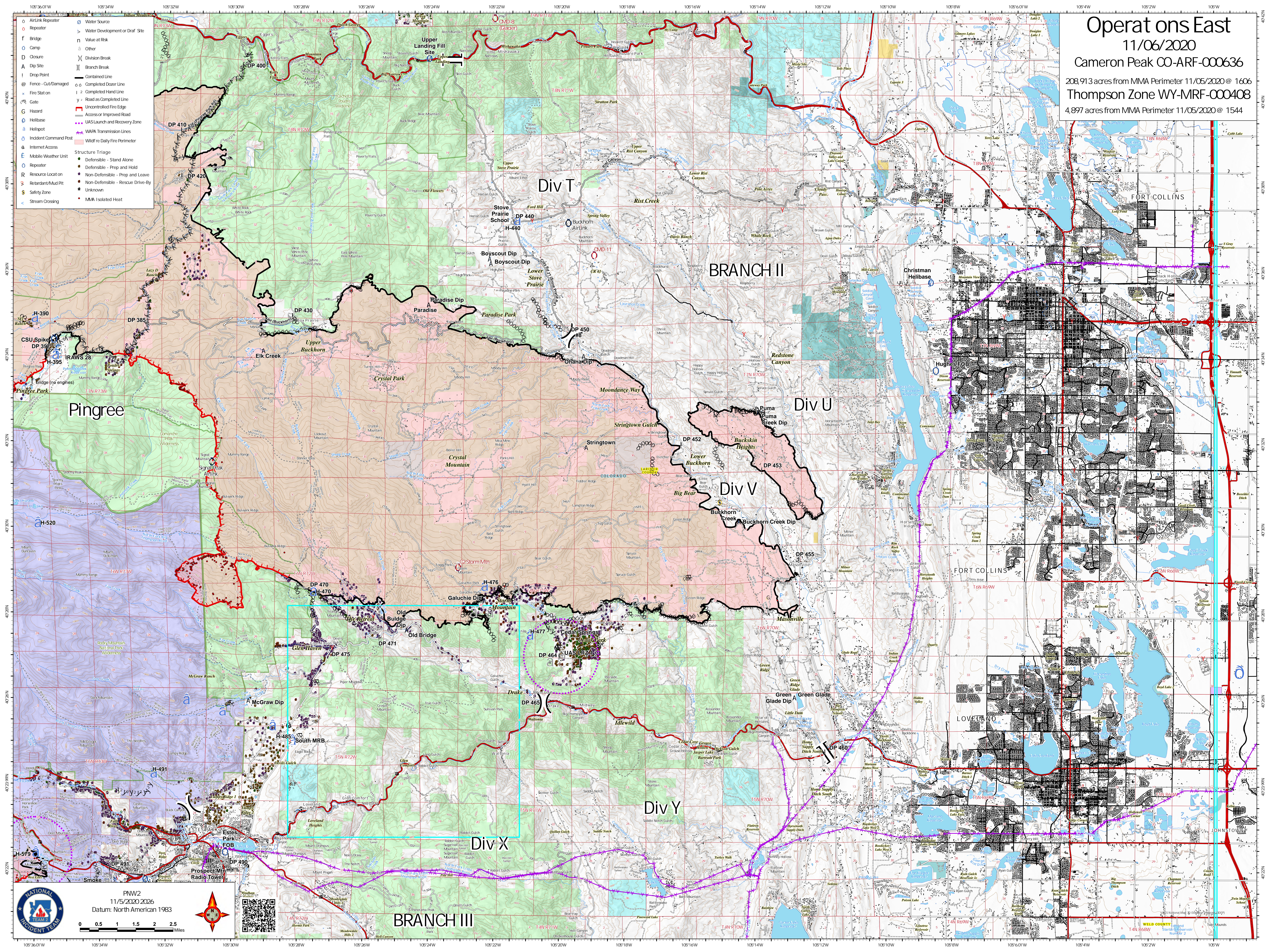
11/06/2020

Cameron Peak CO-ARF-000636


208,913 acres from MMA Perimeter 11/05/2020 @ 1606

Thompson Zone WY-MRF-000408


4,897 acres from MMA Perimeter 11/05/2020 @ 1544




- AirLink Repeater
- Repeater
- Dip Site
- Drop Point
- Fences - Cut/Damaged
- Gate
- Hazard
- Helibase
- Helispot
- Incident Command Post
- Internet Access
- Mobile Weather Unit
- Repeater
- Resource Locat on
- Retardant/Mud Pit
- Safety Zone
- Stream Crossing
- Water Source
- Water Development or Draft Site
- Value at Risk
- Other
- Division Break
- Branch Break
- Contained Line
- Completed Doser Line
- Completed Hand Line
- Road as Completed Line
- Uncontrolled Fire Edge
- Access or Improved Road
- UAS Launch and Recovery Zone
- WAPA Transmission Lines
- Wildfire Daily Fire Perimeter
- Structure Triage
 - Defensible - Stand Alone
 - Defensible - Prep and Hold
 - Non-Defensible - Prep and Hold
 - Non-Defensible - Rescue Drive-By
 - Unknown
 - MMA Isolated Heat

 PW2
11/5/2020 2026
Datum: North American 1983

0 0.5 1 1.5 2 2.5 Miles





WELD COUNTY
T4N R65W S5 T4N R65W S5
Number 2