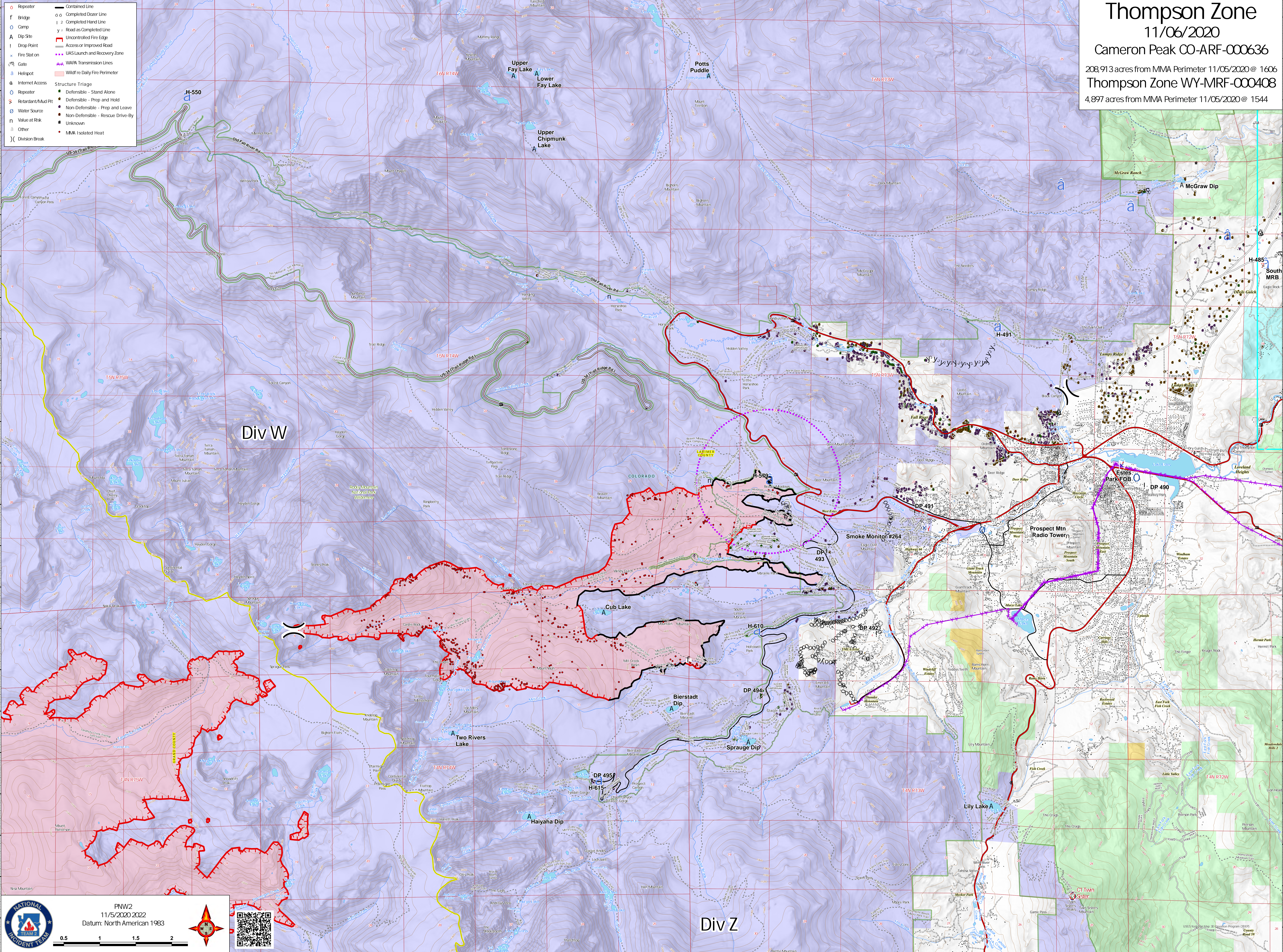


**Thompson Zone**  
 11/06/2020  
 Cameron Peak CO-ARF-000636  
 208,913 acres from MMA Perimeter 11/05/2020 @ 1606  
 Thompson Zone WY-MRF-000408  
 4,897 acres from MMA Perimeter 11/05/2020 @ 1544

- Repeater
- Bridge
- Camp
- A Dip Site
- I Drop Point
- × Fire Station
- Gate
- ⊕ Helipad
- ⊕ Internet Access
- Repeater
- Retardant/Mud Pit
- Water Source
- n Value at Risk
- Other
- ) Division Break
- Contained Line
- Completed Doser Line
- Completed Hand Line
- Road as Completed Line
- Uncontrolled Fire Edge
- Access or Improved Road
- UAS Launch and Recovery Zone
- WAPA Transmission Lines
- Wildfire Daily Fire Perimeter
- Structure Triage
- Defensible - Stand Alone
- Retardant/Mud Pit
- Non-Defensible - Prep and Hold
- Non-Defensible - Prep and Leave
- Non-Defensible - Rescue Drive-By
- Unknown
- Other
- MMA Isolated Heat



**NATIONAL INCIDENT TEAM**  
 PNW2  
 11/5/2020 2022  
 Datum: North American 1983

USGS National Map Accuracy Program (NMAP) Compliance Report  
 11/05/2020  
 Thompson Zone WY-MRF-000408