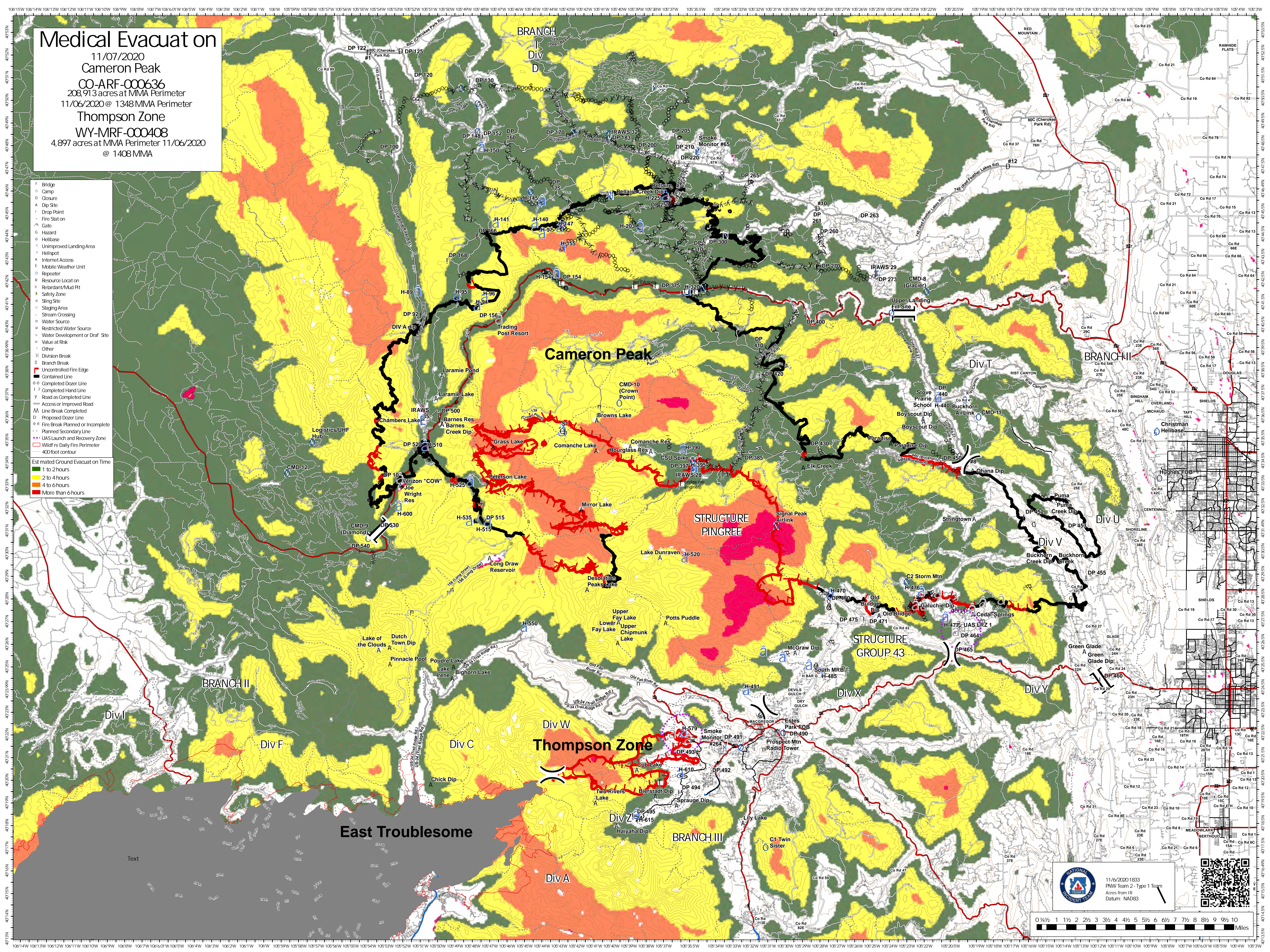




Medical Evacuation
 11/07/2020
 Cameron Peak
 CO-ARF-000636
 208,913 acres at MMA Perimeter
 11/06/2020 @ 1348 MMA Perimeter
 Thompson Zone
 WY-MRF-000408
 4,897 acres at MMA Perimeter 11/06/2020
 @ 1408 MMA

- Bridges
 - Camp
 - Closure
 - Dip Site
 - Drop Point
 - Fire Stat on
 - Gate
 - Hazard
 - Helibase
 - Unimproved Landing Area
 - Helispot
 - Internet Access
 - Mobile Weather Unit
 - Repeater
 - Resource Locat on
 - Retardant/Mud Pit
 - Safety Zone
 - Sing Site
 - Staging Area
 - Stream Crossing
 - Water Source
 - Restricted Water Source
 - Water Development or Draf Site
 - Value at Risk
 - Other
 - Division Break
 - || Branch Break
 - Uncontrolled Fire Edge
 - Contained Line
 - Completed Dozer Line
 - Completed Hand Line
 - Y Road as Completed Line
 - Access or Improved Road
 - M Line Break Completed
 - D Proposed Dozer Line
 - Fire Break Planned or Incomplete
 - Planned Secondary Line
 - UAS Launch and Recovery Zone
 - Wildfire Daily Fire Perimeter
 - 400 foot contour
- Estimated Ground Evacuation on Time
- 1 to 2 hours
 - 2 to 4 hours
 - 4 to 6 hours
 - More than 6 hours





11/6/2020 1833
 PNW Team 2 - Type 1 Team
 Acres from IR
 Datum: NAD83



0 1/4 1/2 1 2 3 3 1/2 4 5 5 1/2 6 6 1/2 7 7 1/2 8 8 1/2 9 9 1/2 10
Miles