

# Operations

11/07/2020

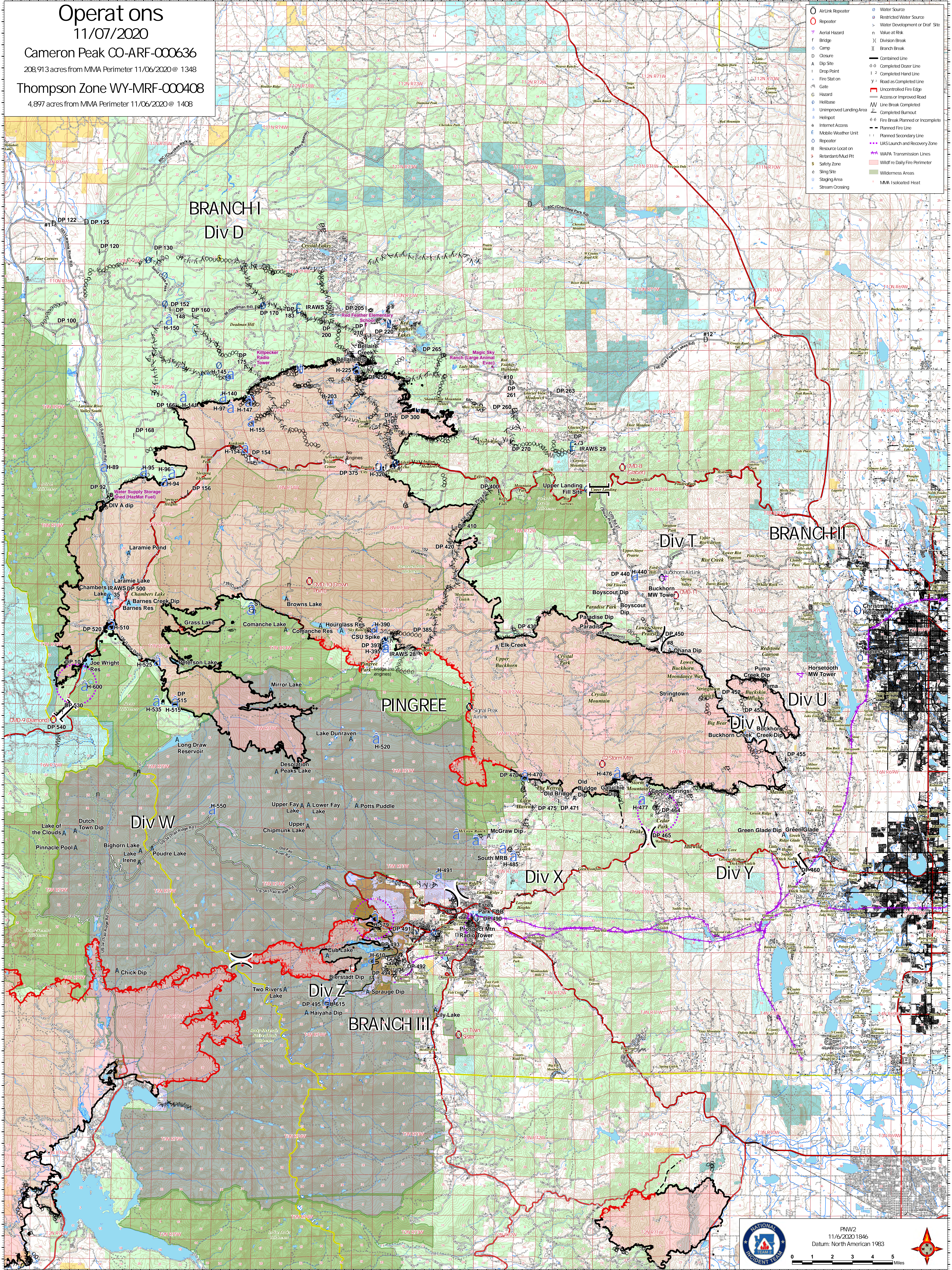
Cameron Peak CO-ARF-000636

208,913 acres from MMA Perimeter 11/06/2020 @ 1348

Thompson Zone WY-MRF-000408

4,897 acres from MMA Perimeter 11/06/2020 @ 1408

○ AirLink Repeater	○ Water Source
○ Repeater	○ Restricted Water Source
▽ Aerial Hazard	○ Water Development or Draft Site
f Bridge	n Value at Risk
⊗ Camp	⊗ Division Break
⊗ Closure	⊗ Branch Break
A Dip Site	⊗ Contained Line
I Drop Point	○ Completed Dozer Line
⊗ Fire Station	⊗ Completed Hand Line
⊗ Gate	⊗ Fire Start on
○ Hazard	⊗ Road as Completed Line
○ Holibase	⊗ Uncontrolled Fire Edge
○ Unimproved Land Area	⊗ Access or Improved Road
○ Hotspot	⊗ Line Break Completed
○ Internet Access	⊗ Completed Fire Line
○ Mobile Weather Unit	⊗ Fire Break Planned or Incomplete
○ Repeater	⊗ Planned Fire Line
R Resource Locat on	⊗ Planned Secondary Line
○ Retardant/Mud Pit	⊗ UAS Launch and Recovery Zone
○ Safety Zone	⊗ WAPA Transmission Lines
○ Sling Site	⊗ Wildfire Daily Fire Perimeter
○ Staging Area	○ Wilderness Areas
○ Stream Crossing	○ MVA Isolated Heat



PNW2  
11/6/2020 1846  
Datum: North American 1983

