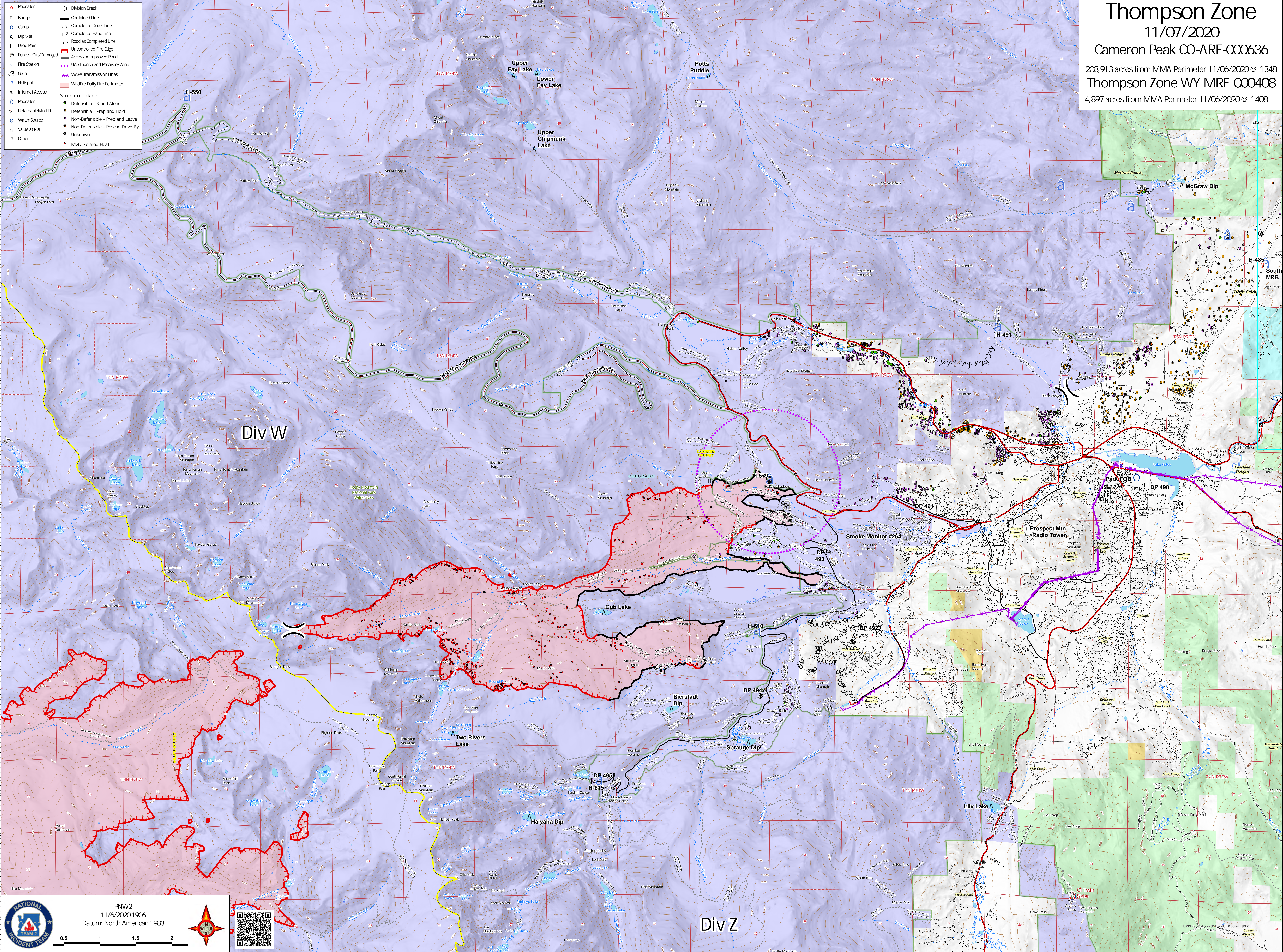


Thompson Zone
 11/07/2020
 Cameron Peak CO-ARF-000636
 208,913 acres from MMA Perimeter 11/06/2020 @ 1348
 Thompson Zone WY-MRF-000408
 4,897 acres from MMA Perimeter 11/06/2020 @ 1408

- Repeater
- f Bridge
- Camp
- A Dip Site
- ! Drop Point
- @ Fence - Cut/Damaged
- × Fire Station
- ⚡ Gate
- ⚡ Helispot
- Ⓜ Internet Access
- Ⓜ Repeater
- Ⓜ Retardant/Mud Pit
- Ⓜ Water Source
- Ⓜ Value at Risk
- Ⓜ Other
- Ⓜ Division Break
- Contained Line
- Completed Dozer Line
- ! Completed Hand Line
- Road as Completed Line
- Uncontrolled Fire Edge
- Access or Improved Road
- UAS Launch and Recovery Zone
- WAPA Transmission Lines
- Wildfire Daily Fire Perimeter
- Structure Triage
- Defensible - Stand Alone
- Defensible - Prep and Hold
- Non-Defensible - Prep and Leave
- Non-Defensible - Rescue Drive-By
- Unknown
- MVA Isolated Heat



NATIONAL INCIDENT TEAM
 PNW2
 11/6/2020 1906
 Datum: North American 1983

Scale: 0.5, 1, 1.5, 2

USGS National Map Accuracy Program (NMAP) Class 1
 1:25000 Scale
 2011 Edition
 100% Accuracy