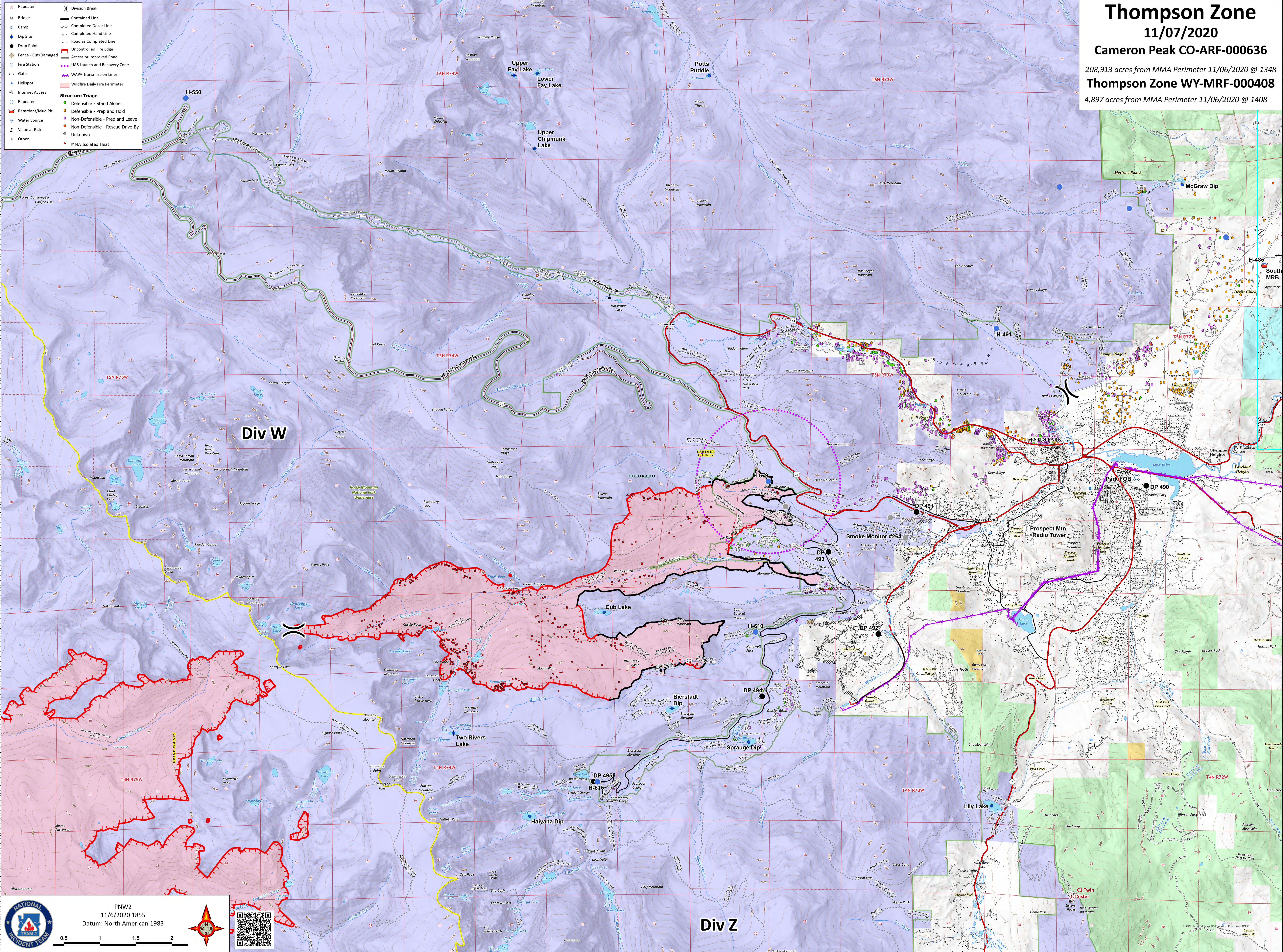


**Thompson Zone**  
 11/07/2020  
 Cameron Peak CO-ARF-000636  
 208,913 acres from MMA Perimeter 11/06/2020 @ 1348  
**Thompson Zone WY-MRF-000408**  
 4,897 acres from MMA Perimeter 11/06/2020 @ 1408

- Repeater
  - ⊗ Bridge
  - ⊙ Camp
  - ◆ Dip Site
  - Drop Point
  - ⊖ Fence - Cut/Damaged
  - ⊙ Fire Station
  - Gate
  - ⊙ Helispot
  - ⊙ Internet Access
  - ⊙ Repeater
  - ⊙ Water Source
  - ⊙ Value at Risk
  - ⊙ Other
- ⊗ Division Break
  - Contained Line
  - ⊖ Completed Dozer Line
  - ⊖ Completed Hand Line
  - ⊖ Road as Completed Line
  - ⊖ Uncontrolled Fire Edge
  - ⊖ Access or Improved Road
  - ⊖ UAS Launch and Recovery Zone
  - ⊖ WAPA Transmission Lines
  - ⊖ Wildfire Daily Fire Perimeter
- Structure Triage**
- Defensible - Stand Alone
  - Defensible - Prep and Hold
  - Non-Defensible - Prep and Leave
  - Non-Defensible - Rescue Drive-By
  - Unknown
  - MMA Isolated Heat



**NATIONAL INCIDENT TEAM**  
 PNW2  
 11/6/2020 1855  
 Datum: North American 1983

USGS National Map 3D Elevation Program (NED) 1/3" Resolution  
 © 2019