

# Medical Evacuation

11/08/2020

**Cameron Peak**

**CO-ARF-000636**  
208,913 acres at MMA Perimeter

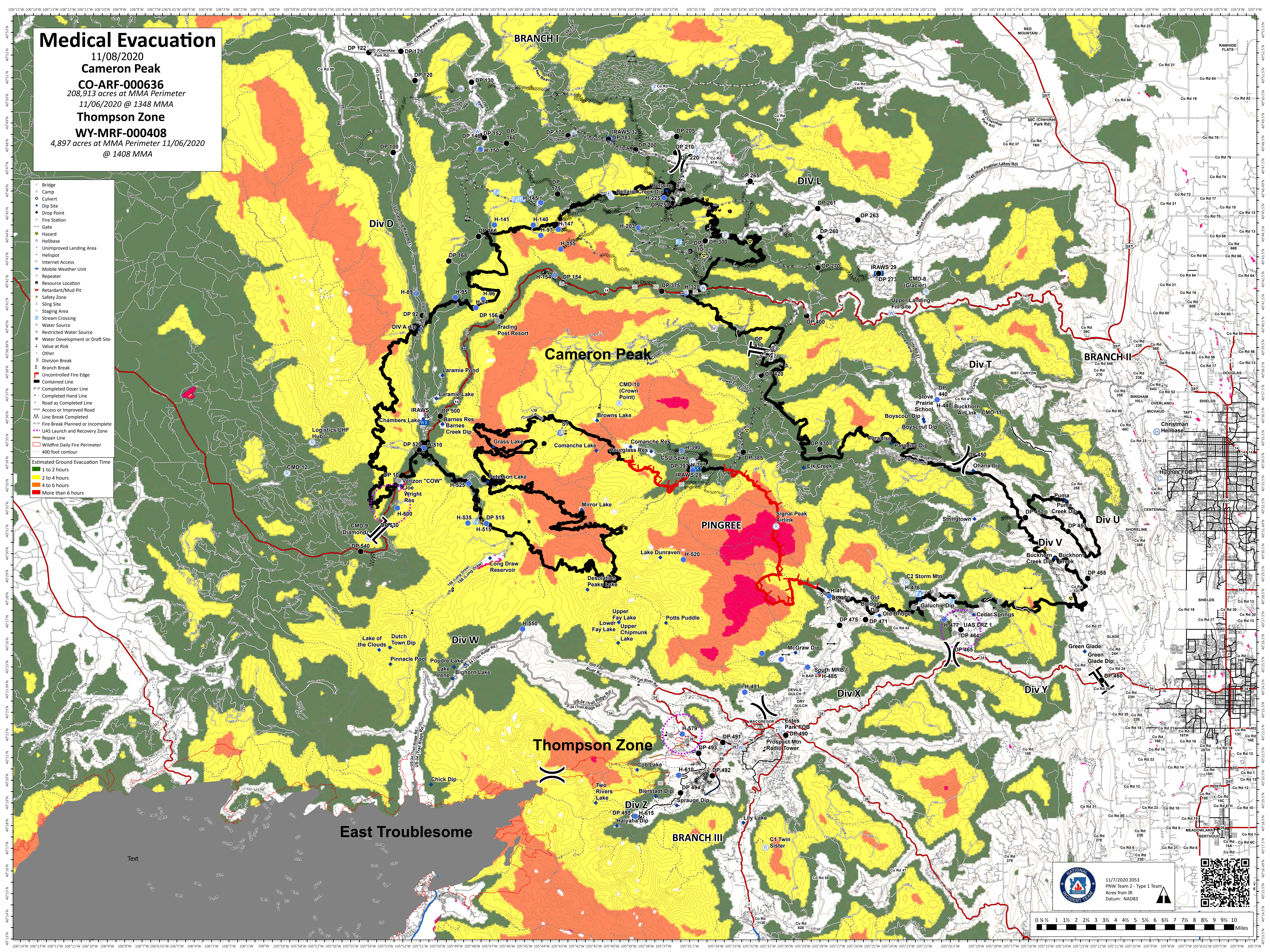
11/06/2020 @ 1348 MMA

**Thompson Zone**

**WY-MRF-000408**

4,897 acres at MMA Perimeter 11/06/2020  
@ 1408 MMA

- Bridge
  - Camp
  - Culvert
  - Dip Site
  - Drop Point
  - Fire Station
  - Gate
  - Hazard
  - Helibase
  - Unimproved Landing Area
  - Helispot
  - Internet Access
  - Mobile Weather Unit
  - Repeater
  - Resource Location
  - Retardant/Mud Pit
  - Safety Zone
  - Sling Site
  - Staging Area
  - Stream Crossing
  - Water Source
  - Restricted Water Source
  - Water Development or Draft Site
  - Value at Risk
  - Other
  - Division Break
  - Branch Break
  - Uncontrolled Fire Edge
  - Contained Line
  - Completed Dozer Line
  - Completed Hand Line
  - Road as Completed Line
  - Access or Improved Road
  - Line Break Completed
  - Fire Break Planned or Incomplete
  - UAS Launch and Recovery Zone
  - Repair Line
  - Wildfire Daily Fire Perimeter
  - 400 foot contour
- Estimated Ground Evacuation Time
- 1 to 2 hours
  - 2 to 4 hours
  - 4 to 6 hours
  - More than 6 hours



11/7/2020 2053  
PNW Team 2 - Type 1 Team  
Acres from IR  
Datum: NAD83

0 ¼ 1 1½ 2 2½ 3 3½ 4 4½ 5 5½ 6 6½ 7 7½ 8 8½ 9 9½ 10  
Miles