

Control Lines In Private Land

11/08/2020

Cameron Peak CO-ARF-000636

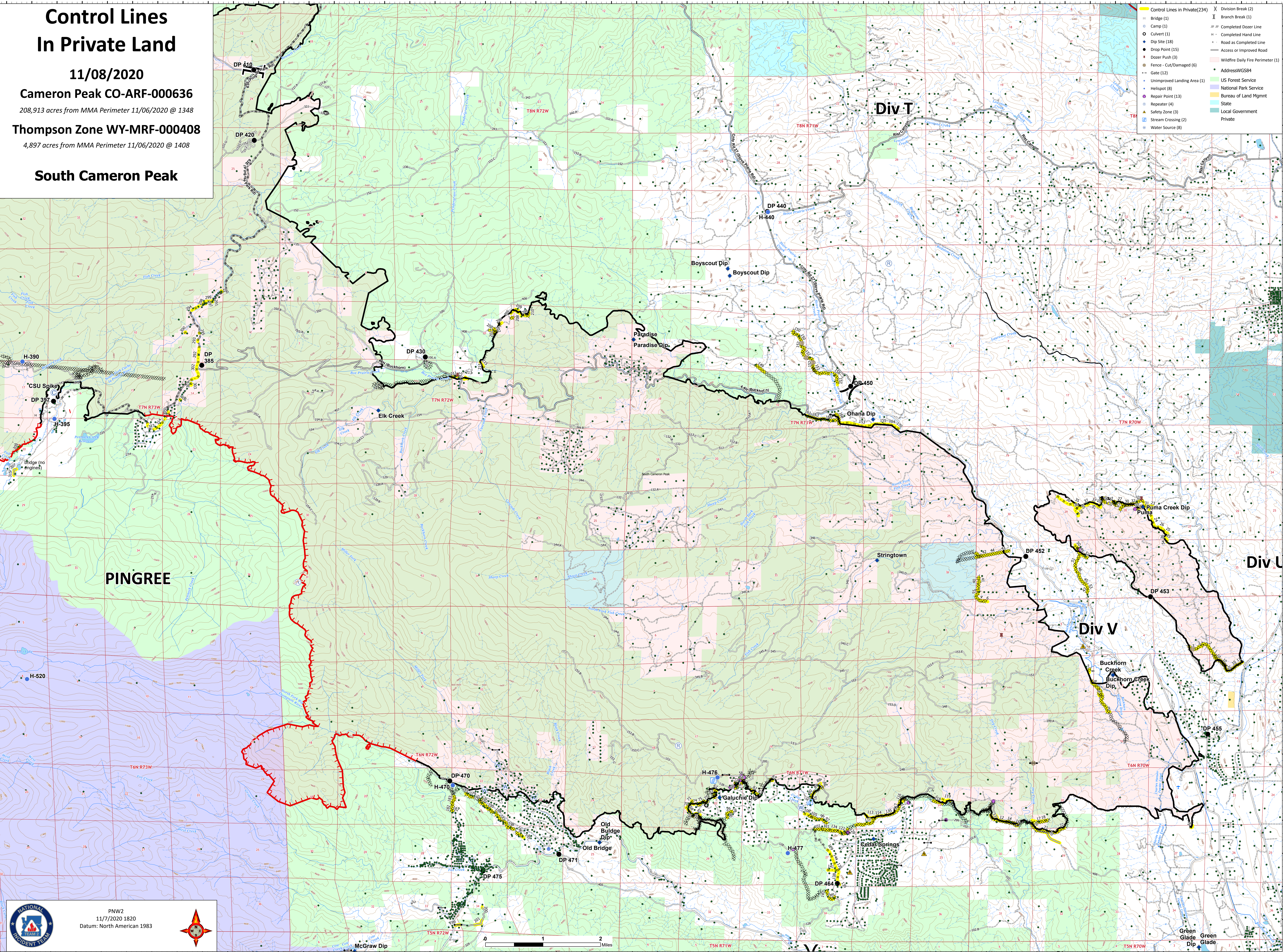
208,913 acres from MMA Perimeter 11/06/2020 @ 1348

Thompson Zone WY-MRF-000408

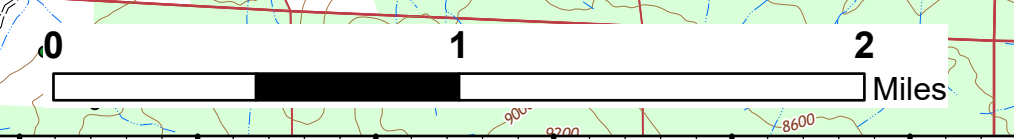
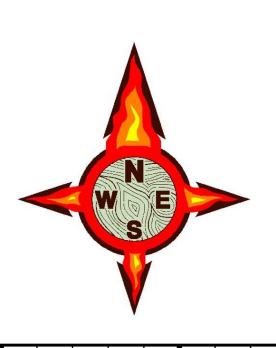
4,897 acres from MMA Perimeter 11/06/2020 @ 1408

South Cameron Peak

- Control Lines in Private(234)
- Bridge (1)
- Camp (1)
- Culvert (1)
- Dip Site (18)
- Drop Point (15)
- Dozer Push (3)
- Fence - Cut/Damaged (6)
- Gate (12)
- Unimproved Landing Area (1)
- Helispot (8)
- Repair Point (13)
- Repeater (4)
- Safety Zone (3)
- Stream Crossing (2)
- Water Source (8)
- Division Break (2)
- Branch Break (1)
- Completed Dozer Line
- Completed Hand Line
- Road as Completed Line
- Access or Improved Road
- Wildfire Daily Fire Perimeter (1)
- AddressWGS84
- US Forest Service
- National Park Service
- Bureau of Land Mgmt
- State
- Local Government
- Private



PNW2
11/7/2020 1820
Datum: North American 1983



Green Glade Dip
Green Glade