

Transportation

11/08/2020

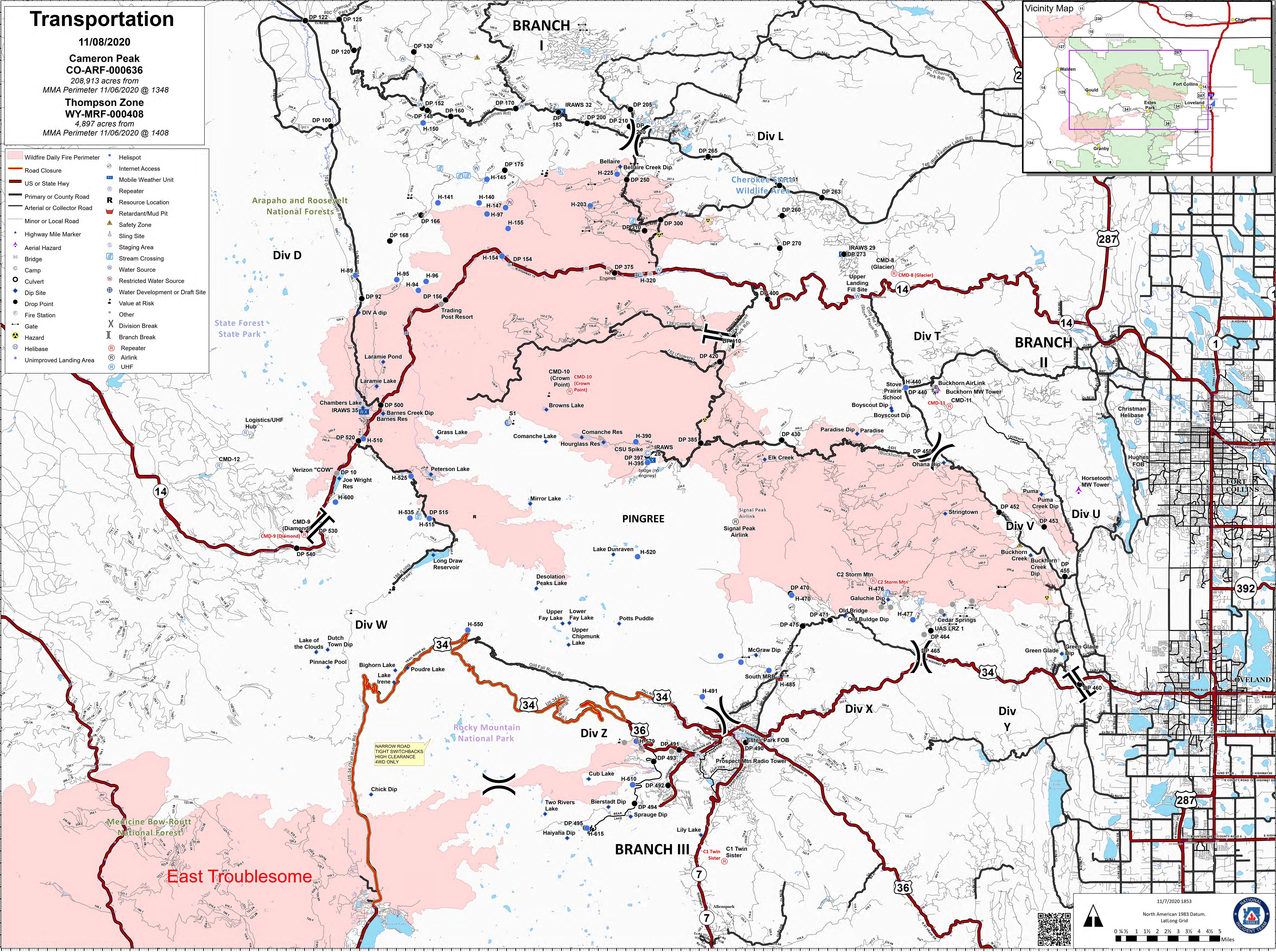
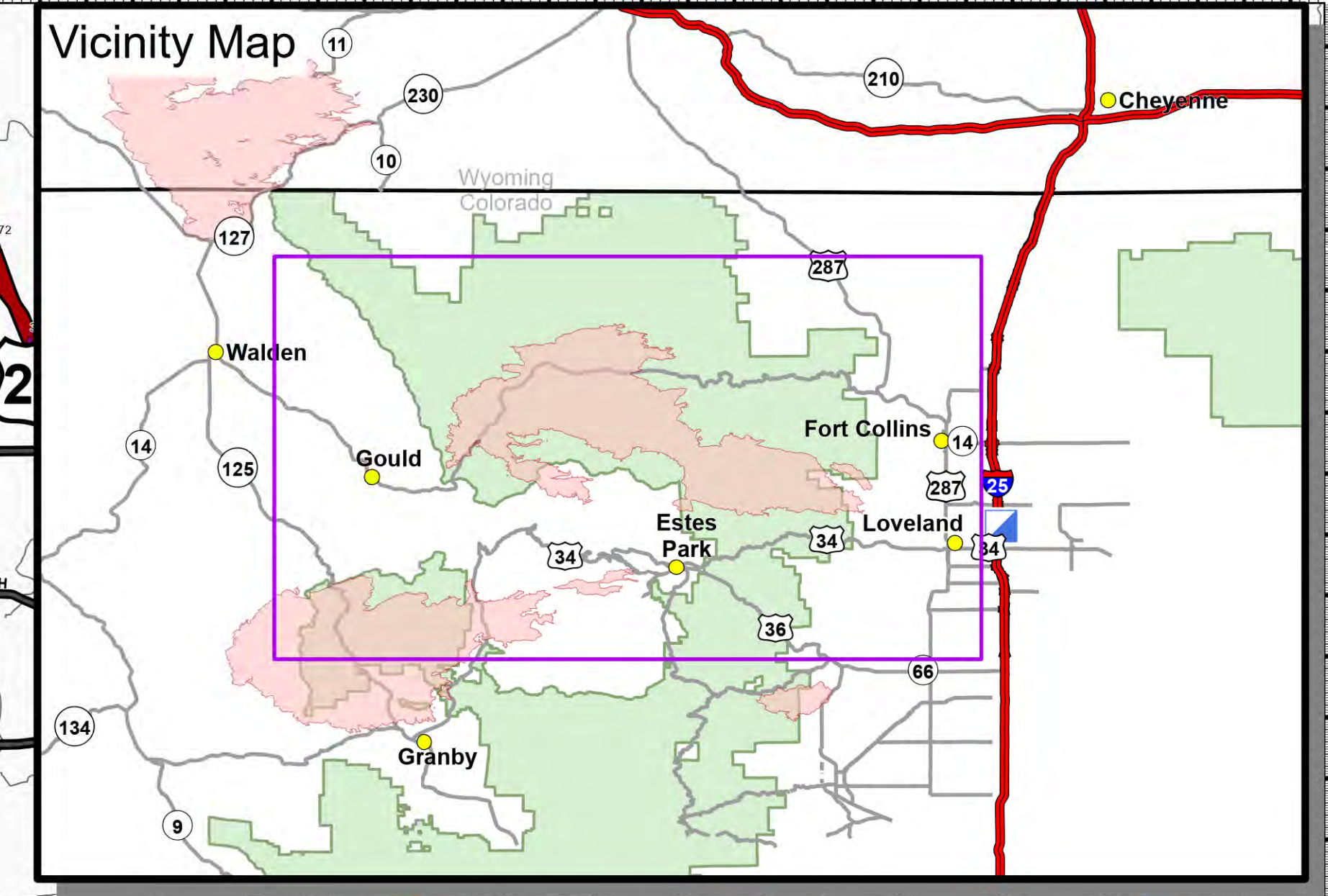
**Cameron Peak
CO-ARF-000636**

208,913 acres from
MMA Perimeter 11/06/2020 @ 1348

**Thompson Zone
WY-MRF-000408**

4,897 acres from
MMA Perimeter 11/06/2020 @ 1408

- Wildfire Daily Fire Perimeter
- Road Closure
- US or State Hwy
- Primary or County Road
- Arterial or Collector Road
- Minor or Local Road
- Highway Mile Marker
- Aerial Hazard
- Bridge
- Camp
- Culvert
- Dip Site
- Drop Point
- Fire Station
- Gate
- Hazard
- Helibase
- Unimproved Landing Area
- Helispot
- Internet Access
- Mobile Weather Unit
- Repeater
- Resource Location
- Retardant/Mud Pit
- Safety Zone
- Sling Site
- Staging Area
- Stream Crossing
- Water Source
- Restricted Water Source
- Water Development or Draft Site
- Value at Risk
- Other
- Division Break
- Branch Break
- Repeater
- Airlink
- UHF



East Troublesome

NARROW ROAD
TIGHT SWITCHBACKS
HIGH CLEARANCE
4WD ONLY

11/7/2020 1853
North American 1983 Datum.
LatLong Grid
0 1/4 1/2 2/4 3/4 4 4 1/2 5
Miles

