

# Repair Branch II/III

11/09/2020

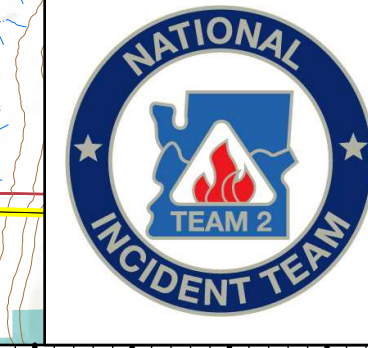
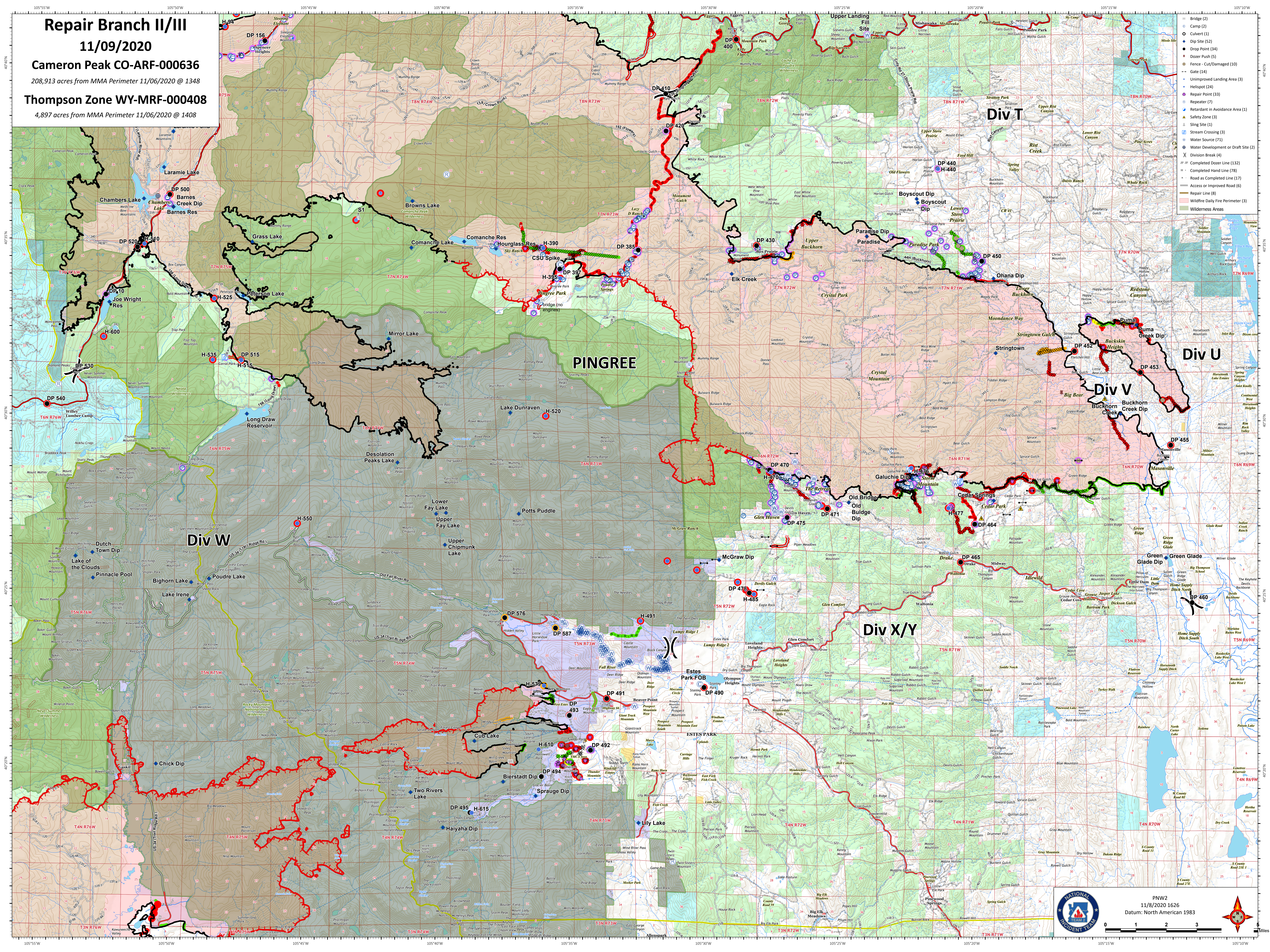
Cameron Peak CO-ARF-000636

208,913 acres from MMA Perimeter 11/06/2020 @ 1348

Thompson Zone WY-MRF-000408

4,897 acres from MMA Perimeter 11/06/2020 @ 1408

- Bridge (2)
- Camp (1)
- Culvert (1)
- Dip Site (52)
- Drop Point (54)
- Dozer Push (5)
- Fence - Cut/Damaged (10)
- Gate (14)
- Unimproved Landing Area (3)
- Helispot (24)
- Repair Point (33)
- Repeater (7)
- Retardant in Avoidance Area (1)
- Sling Site (1)
- Safety Zone (3)
- Sling Site (1)
- Stream Crossing (3)
- Water Source (71)
- Water Development or Draft Site (2)
- Division Break (4)
- Completed Dozer Line (132)
- Completed Hand Line (78)
- Road as Completed Line (17)
- Access or Improved Road (6)
- Repair Line (8)
- Wildfire Daily Fire Perimeter (3)
- Wilderness Areas



PNW2  
11/8/2020 1626  
Datum: North American 1983

