

Medical Ground Transportation

11/11/2020

Cameron Peak
 CO-ARF-000636
 208,913 acres @ MMA
 Perimeter 11/06/2020 @ 1348

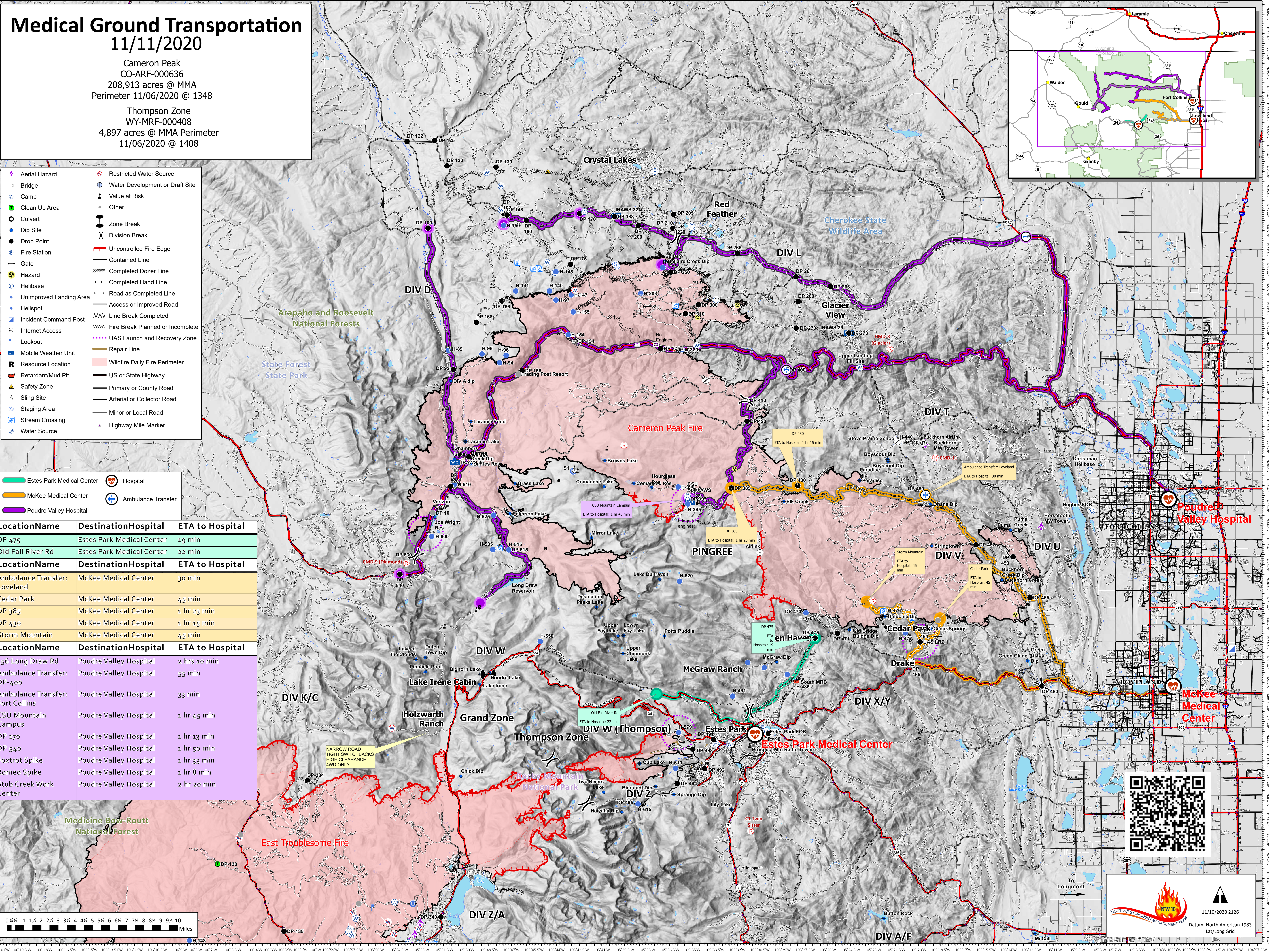
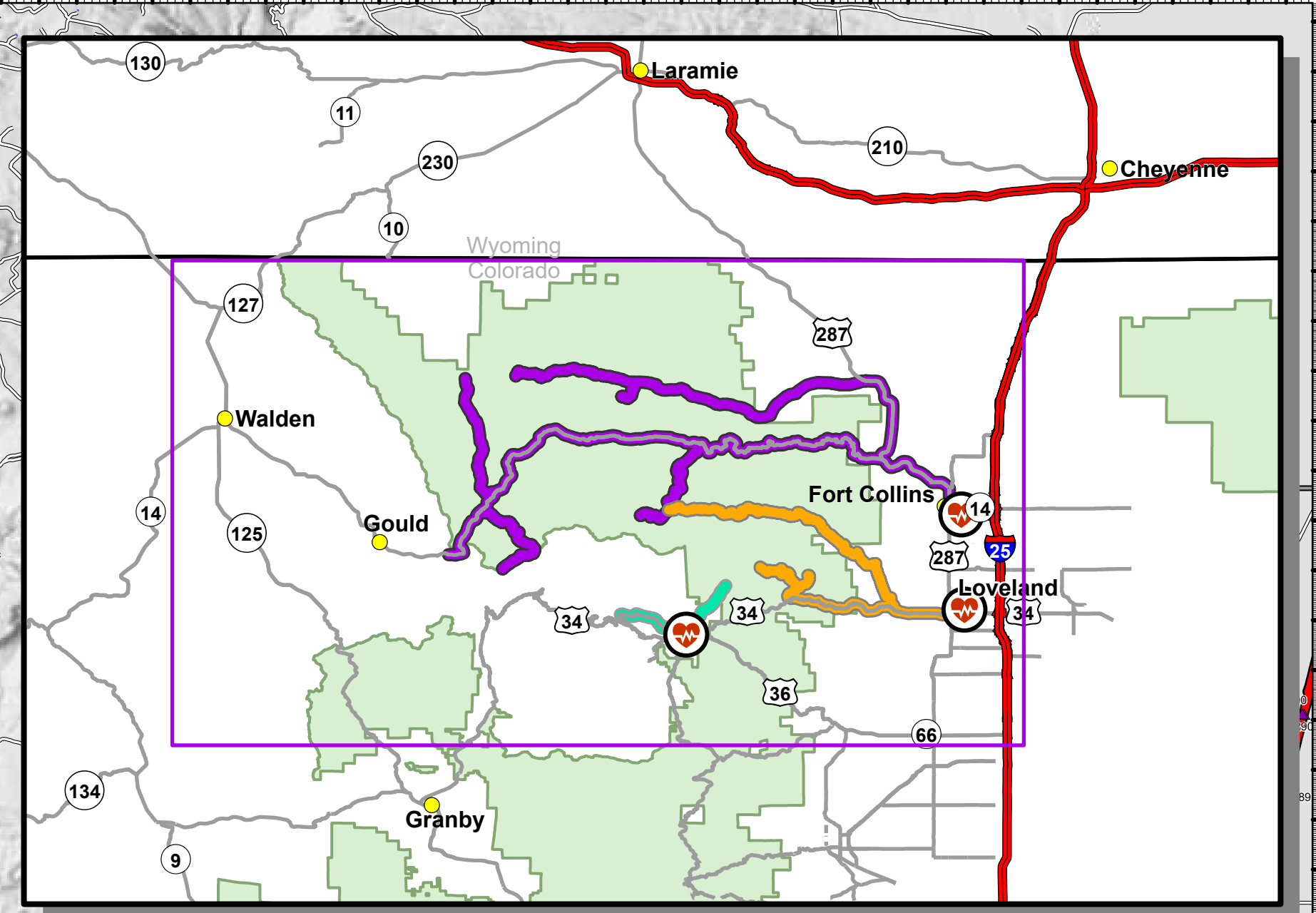
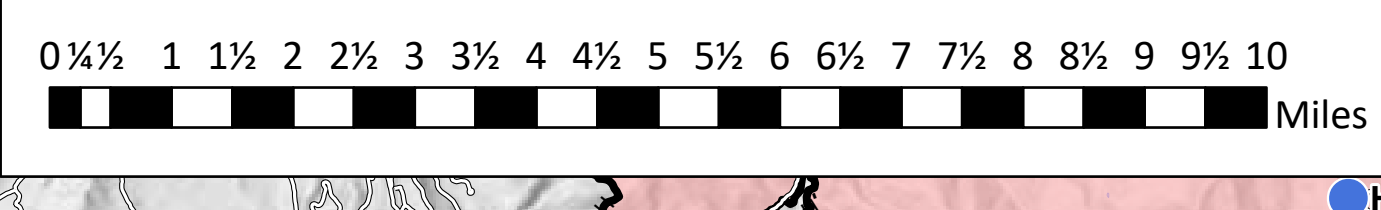
Thompson Zone
 WY-MRF-000408
 4,897 acres @ MMA Perimeter
 11/06/2020 @ 1408

- Aerial Hazard
- Bridge
- Camp
- Clean Up Area
- Culvert
- Dip Site
- Drop Point
- Fire Station
- Gate
- Hazard
- Helibase
- Unimproved Landing Area
- Helispot
- Incident Command Post
- Internet Access
- Lookout
- Mobile Weather Unit
- Resource Location
- Retardant/Mud Pit
- Safety Zone
- Sling Site
- Staging Area
- Stream Crossing
- Water Source
- Restricted Water Source
- Water Development or Draft Site
- Value at Risk
- Other
- Zone Break
- Division Break
- Uncontrolled Fire Edge
- Contained Line
- Completed Dozer Line
- Completed Hand Line
- Road as Completed Line
- Access or Improved Road
- Line Break Completed
- Fire Break Planned or Incomplete
- UAS Launch and Recovery Zone
- Repair Line
- Wildfire Daily Fire Perimeter
- US or State Highway
- Primary or County Road
- Arterial or Collector Road
- Minor or Local Road
- Highway Mile Marker

- Estes Park Medical Center
- McKee Medical Center
- Poudre Valley Hospital
- Hospital
- Ambulance Transfer

| LocationName | DestinationHospital | ETA to Hospital |
|------------------------------|---------------------------|-----------------|
| DP 475 | Estes Park Medical Center | 19 min |
| Old Fall River Rd | Estes Park Medical Center | 22 min |
| LocationName | DestinationHospital | ETA to Hospital |
| Ambulance Transfer: Loveland | McKee Medical Center | 30 min |
| Cedar Park | McKee Medical Center | 45 min |
| DP 385 | McKee Medical Center | 1 hr 23 min |
| DP 430 | McKee Medical Center | 1 hr 15 min |
| Storm Mountain | McKee Medical Center | 45 min |

| LocationName | DestinationHospital | ETA to Hospital |
|----------------------------------|------------------------|-----------------|
| 156 Long Draw Rd | Poudre Valley Hospital | 2 hrs 10 min |
| Ambulance Transfer: Fort Collins | Poudre Valley Hospital | 55 min |
| Ambulance Transfer: Fort Collins | Poudre Valley Hospital | 33 min |
| CSU Mountain Campus | Poudre Valley Hospital | 1 hr 45 min |
| DP 170 | Poudre Valley Hospital | 1 hr 13 min |
| DP 540 | Poudre Valley Hospital | 1 hr 50 min |
| Foxtrot Spike | Poudre Valley Hospital | 1 hr 33 min |
| Romeo Spike | Poudre Valley Hospital | 1 hr 8 min |
| Stub Creek Work Center | Poudre Valley Hospital | 2 hr 20 min |



11/10/2020 2126
 Datum: North American 1983
 Lat/Long Grid