

Repair Lines on Private Land

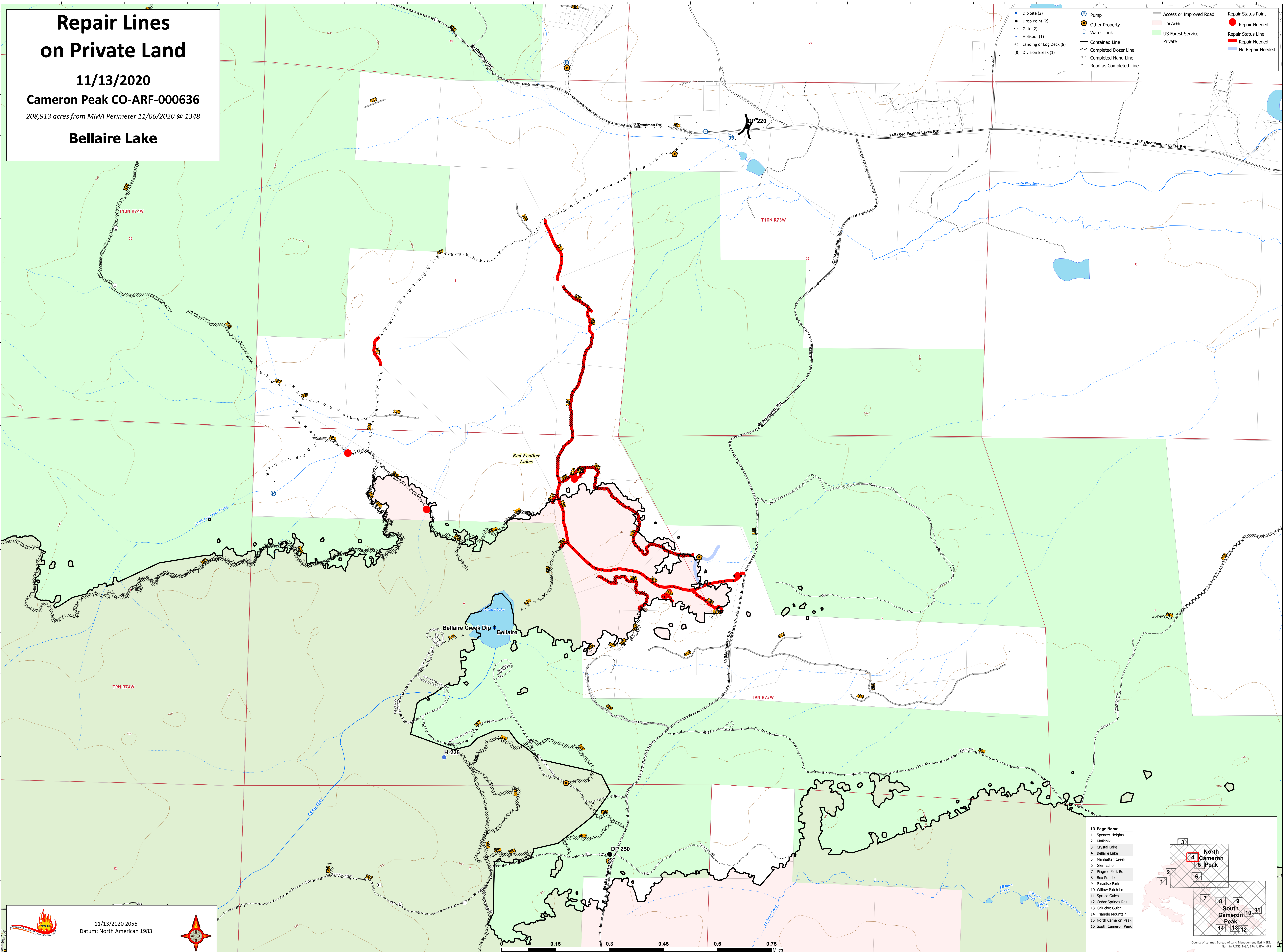
11/13/2020

Cameron Peak CO-ARF-000636

208,913 acres from MMA Perimeter 11/06/2020 @ 1348

Bellaire Lake

● Dip Site (2)	⊕ Pump	— Access or Improved Road	● Repair Status Point
● Drop Point (2)	⊕ Other Property	■ Fire Area	● Repair Needed
● Gate (2)	⊕ Water Tank	■ US Forest Service	— Repair Status Line
● Heliport (1)	— Contained Line	■ Private	● Repair Needed
⊕ Landing or Log Deck (8)	— Completed Dozer Line		● Repair Needed
⊕ Division Break (1)	— Completed Hand Line		— No Repair Needed
	● Road as Completed Line		



11/13/2020 2056
Datum: North American 1983



ID Page Name

- Spencer Heights
- Kirkland
- Crystal Lake
- Bellaire Lake
- Manhattan Creek
- Glen Echo
- Pingree Park Rd
- Box Prairie
- Paradise Park
- Willow Patch Ln
- Spruce Gulch
- Cedar Springs Res.
- Galuchie Gulch
- Triangle Mountain
- North Cameron Peak
- South Cameron Peak

County of Larimer, Bureau of Land Management, Esri, HERE, Garmin, USGS, NOAA, EPA, USDA, NPS