

Repair Lines on Private Land

11/13/2020

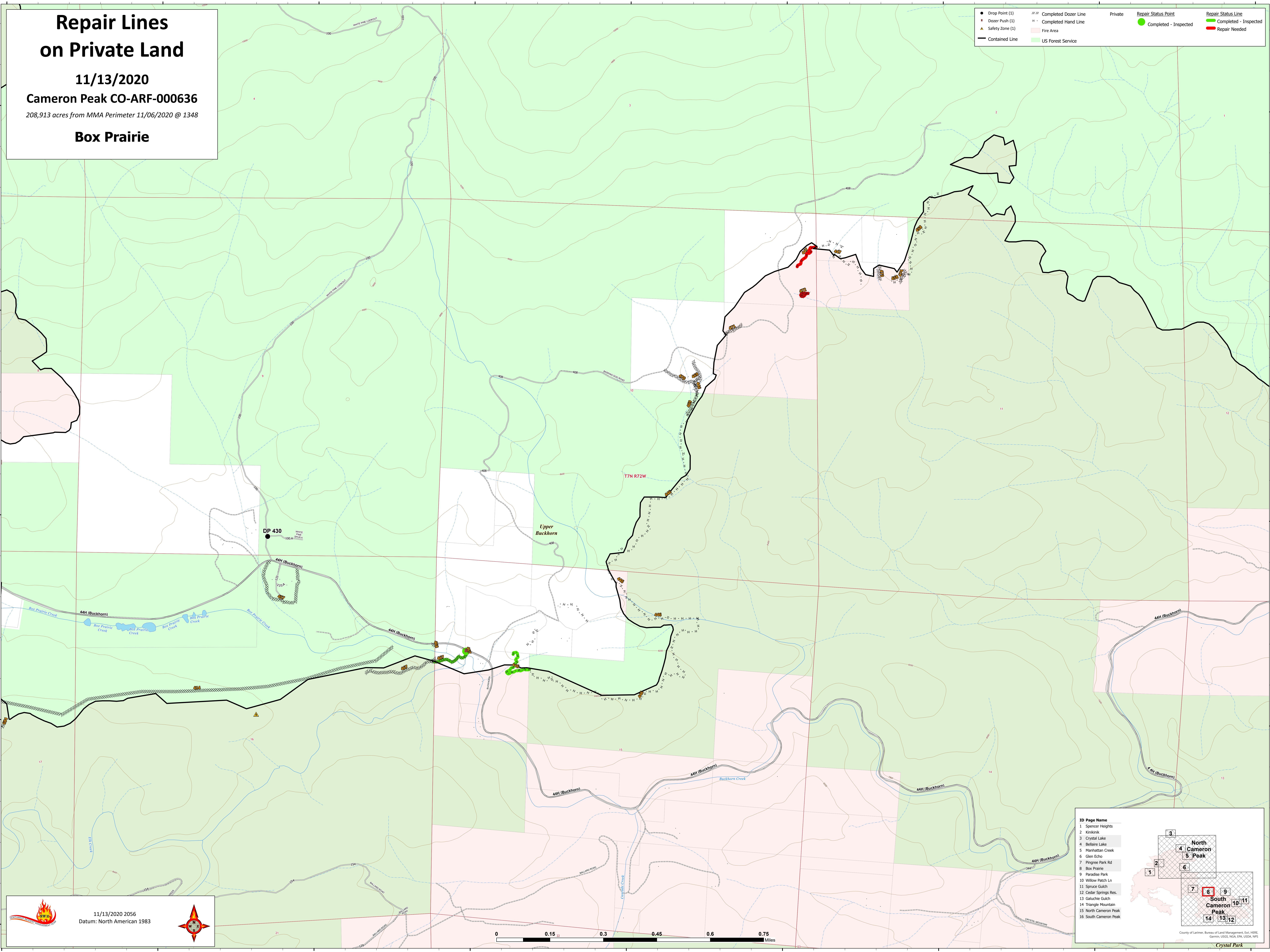
Cameron Peak CO-ARF-000636

208,913 acres from MMA Perimeter 11/06/2020 @ 1348

Box Prairie

Legend:

- Drop Point (1)
- Dozer Push (1)
- Safety Zone (1)
- Contained Line
- Completed Dozer Line
- Completed Hand Line
- Fire Area
- US Forest Service
- Private
- Repair Status Point
 - Completed - Inspected
 - Repair Needed
- Repair Status Line
 - Completed - Inspected
 - Repair Needed



11/13/2020 2056
Datum: North American 1983



ID Page Name

- Spencer Heights
- Kivirikak
- Crystal Lake
- Bellaire Lake
- Manhattan Creek
- Glen Echo
- Pingree Park Rd
- Box Prairie
- Paradise Park
- Willow Patch Ln
- Spruce Gulch
- Cedar Springs Res.
- Galuchie Gulch
- Triangle Mountain
- North Cameron Peak
- South Cameron Peak

County of Larimer, Bureau of Land Management, Esri, HERE, Garmin, USGS, NSA, ERI, USDA, NPS
Crystal Park