

# Repair Lines on Private Land

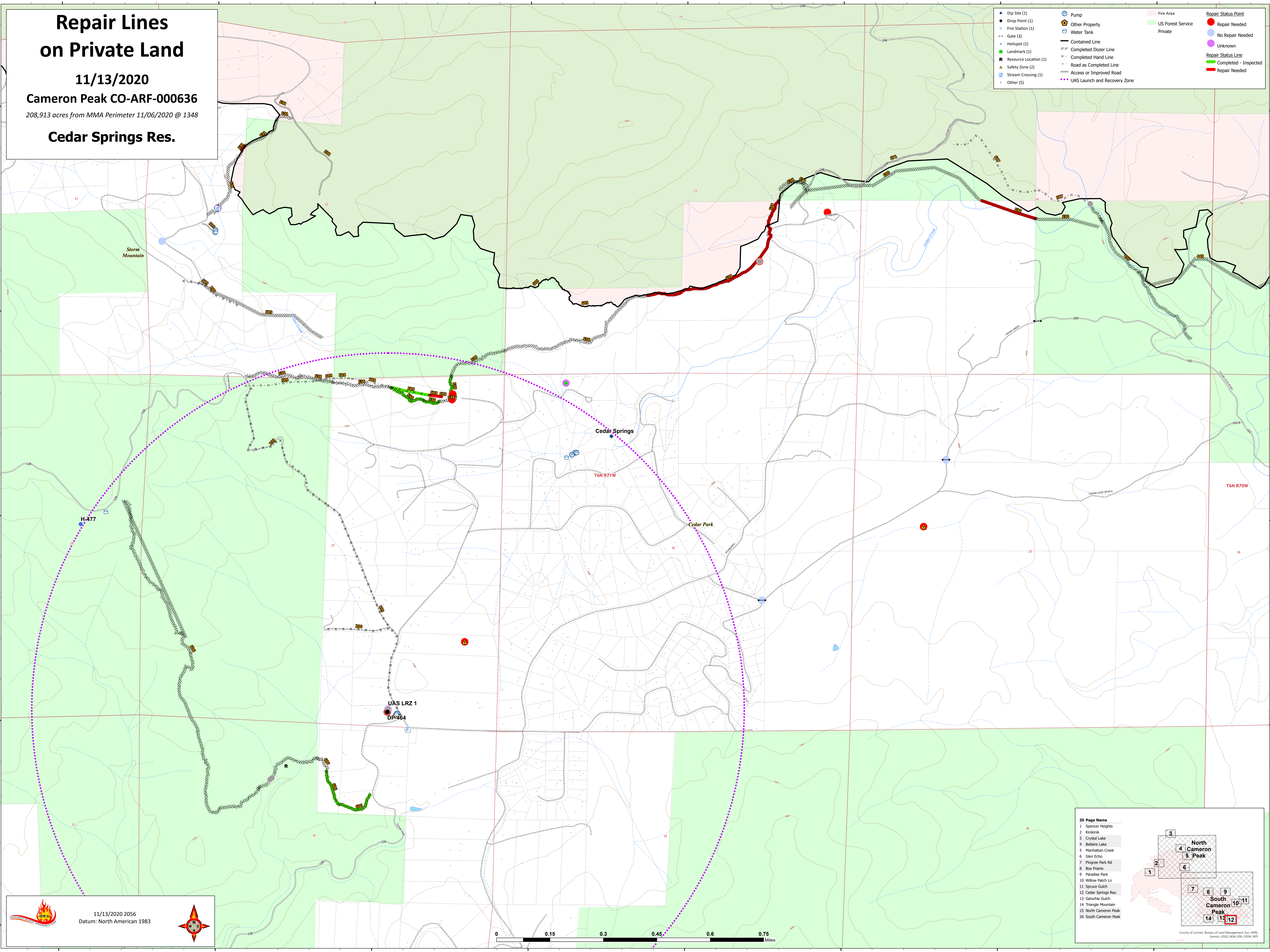
11/13/2020

Cameron Peak CO-ARF-000636

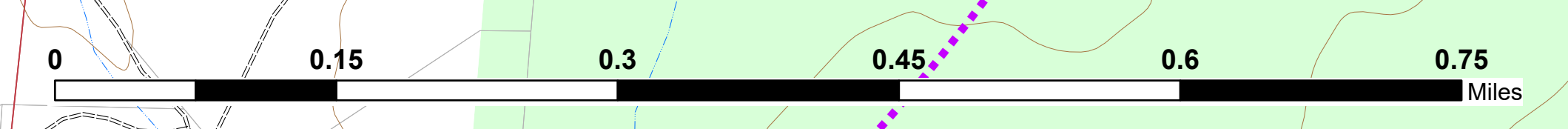
208,913 acres from MMA Perimeter 11/06/2020 @ 1348

Cedar Springs Res.

Dip Site (1)	Pump	Fire Area	Repair Status Point
Drop Point (1)	Other Property	US Forest Service	Repair Needed
Fire Station (1)	Water Tank	Private	No Repair Needed
Gate (3)	Contained Line		Unknown
Helispot (1)	Completed Dozer Line		Repair Status Line
Landmark (1)	Completed Hand Line		Completed - Inspected
Resource Location (1)	Road as Completed Line		Repair Needed
Safety Zone (2)	Access or Improved Road		
Stream Crossing (1)	UAS Launch and Recovery Zone		
Other (5)			



11/13/2020 2056  
Datum: North American 1983



**ID Page Name**

- Spencer Heights
- Kristlak
- Crystal Lake
- Bellare Lake
- Manhattan Creek
- Glen Echo
- Pingree Park Rd
- Box Prairie
- Paradise Park
- Willow Patch Ln
- Spruce Gulch
- Cedar Springs Res.
- Galuchie Gulch
- Triangle Mountain
- North Cameron Peak
- South Cameron Peak

County of Larimer, Bureau of Land Management, Esri, HERE, Garmin, USGS, NOAA, EPA, USDA, NPS