

Repair Lines on Private Land

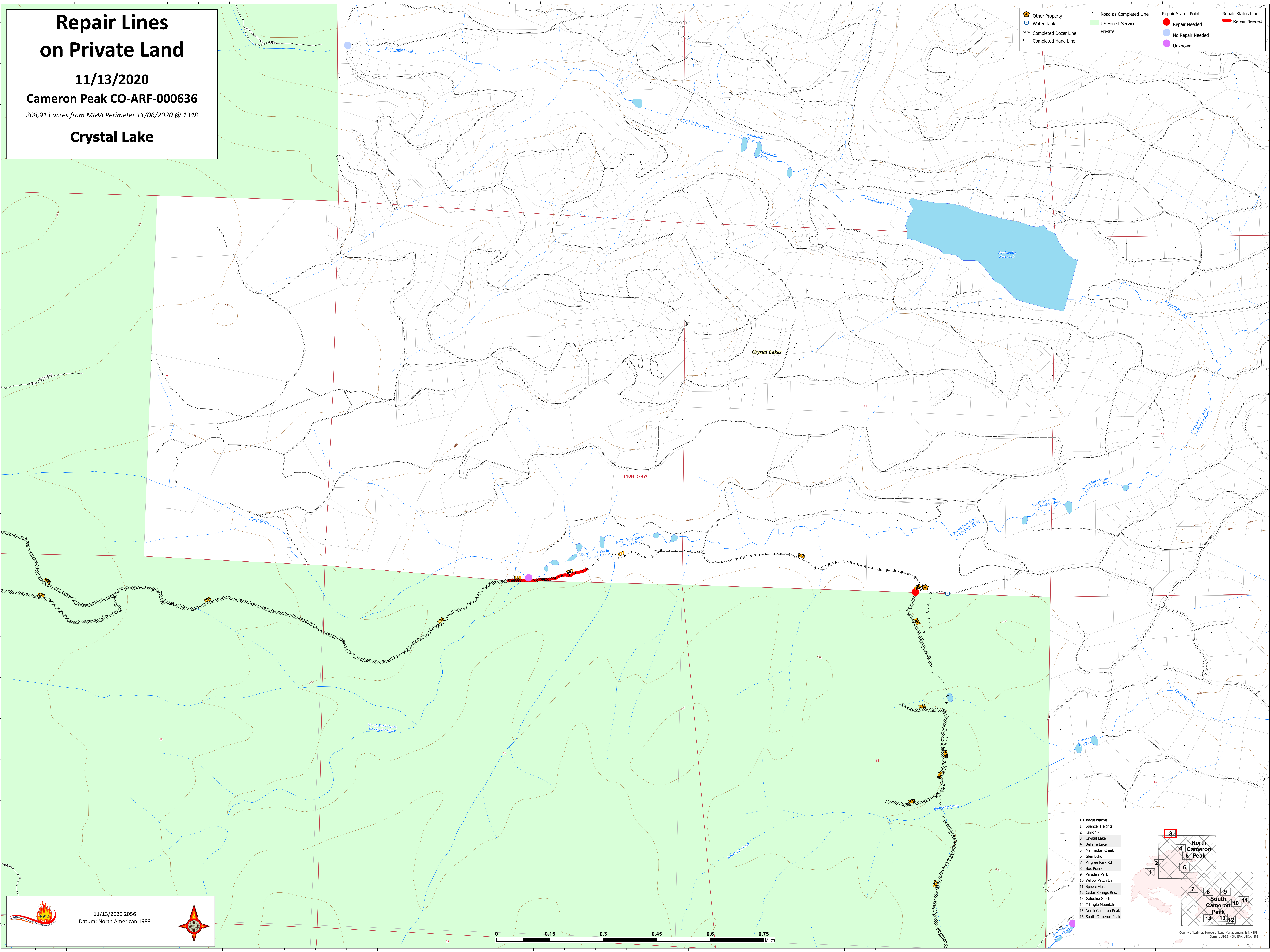
11/13/2020

Cameron Peak CO-ARF-000636

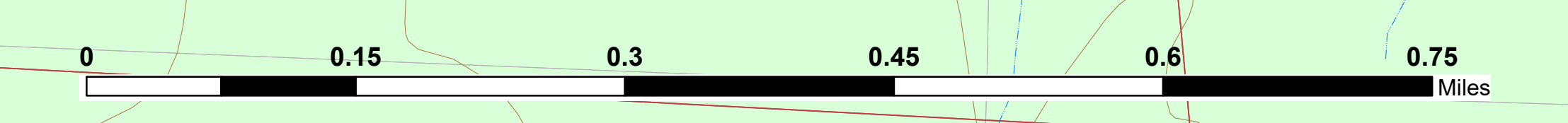
208,913 acres from MMA Perimeter 11/06/2020 @ 1348

Crystal Lake

Other Property	Road as Completed Line	Repair Status Point	Repair Status Line
Water Tank	US Forest Service Private	Repair Needed	Repair Needed
Completed Dozer Line		No Repair Needed	
Completed Hand Line		Unknown	



11/13/2020 2056
Datum: North American 1983



ID Page Name

- Spencer Heights
- Kristiak
- Crystal Lake
- Bellaire Lake
- Manhattan Creek
- Glen Echo
- Pingree Park Rd
- Box Prairie
- Paradise Park
- Willow Patch Ln
- Spruce Gulch
- Cedar Springs Res.
- Galuchie Gulch
- Triangle Mountain
- North Cameron Peak
- South Cameron Peak

County of Larimer, Bureau of Land Management, GIS, HERE, Garmin, USGS, NOAA, EPA, USDA, NPS