

Repair Lines on Private Land

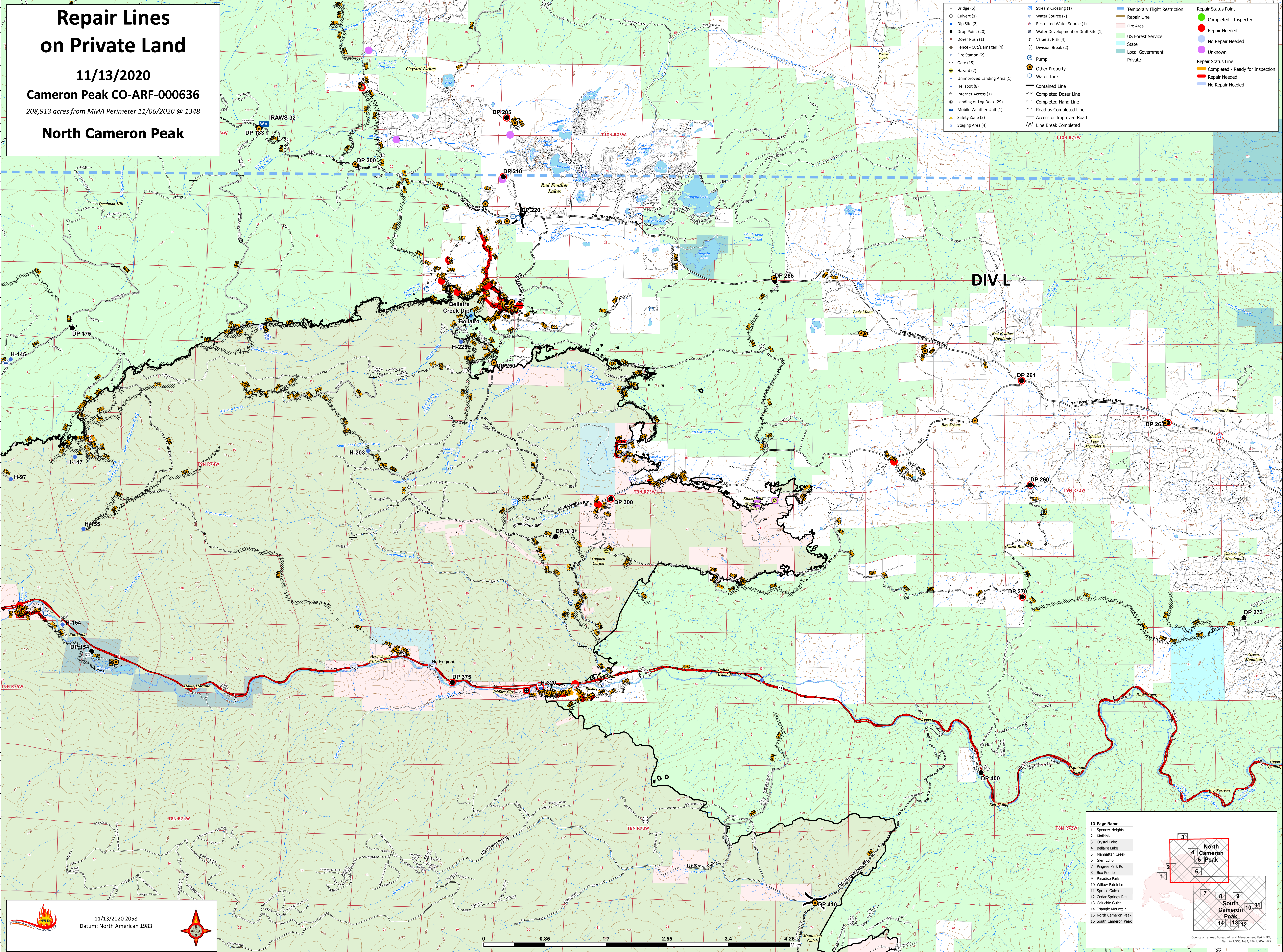
11/13/2020

Cameron Peak CO-ARF-000636

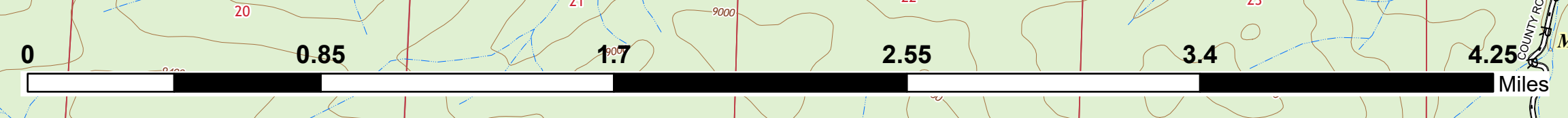
208,913 acres from MMA Perimeter 11/06/2020 @ 1348

North Cameron Peak

<ul style="list-style-type: none"> ○ Bridge (5) ○ Culvert (1) ● Dip Site (2) ● Drop Point (20) ● Dozer Push (1) ● Fence - Cut/Damaged (4) ● Fire Station (2) ● Gate (15) ● Hazard (2) ● Unimproved Landing Area (1) ● Heliport (8) ● Internet Access (1) ● Landing or Log Deck (29) ● Mobile Weather Unit (1) ● Safety Zone (2) ● Staging Area (4) 	<ul style="list-style-type: none"> ● Stream Crossing (1) ● Water Source (7) ● Restricted Water Source (1) ● Water Development or Draft Site (1) ● Value at Risk (4) ● Division Break (2) ● Pump ● Other Property ● Water Tank — Contained Line — Completed Dozer Line — Completed Hand Line — Road as Completed Line — Access or Improved Road — Line Break Completed 	<ul style="list-style-type: none"> — Temporary Flight Restriction — Repair Line — Fire Area — US Forest Service — State — Local Government — Private 	<ul style="list-style-type: none"> ● Repair Status Point ● Completed - Inspected ● Repair Needed ● No Repair Needed ● Unknown — Repair Status Line — Completed - Ready for Inspection — Repair Needed — No Repair Needed
--	--	---	---



11/13/2020 2058
Datum: North American 1983



ID Page Name

- 1 Spencer Heights
- 2 Kintlaek
- 3 Crystal Lake
- 4 Bellaire Lake
- 5 Manhattan Creek
- 6 Glen Echo
- 7 Pingree Park Rd
- 8 Box Prairie
- 9 Paradise Park
- 10 Willow Patch Ln
- 11 Spruce Gulch
- 12 Cedar Springs Res.
- 13 Galuchie Gulch
- 14 Triangle Mountain
- 15 North Cameron Peak
- 16 South Cameron Peak

County of Larimer, Bureau of Land Management, Esri, HERE, Garmin, USGS, NOAA, EPA, USDA, NPS