

Repair Lines on Private Land

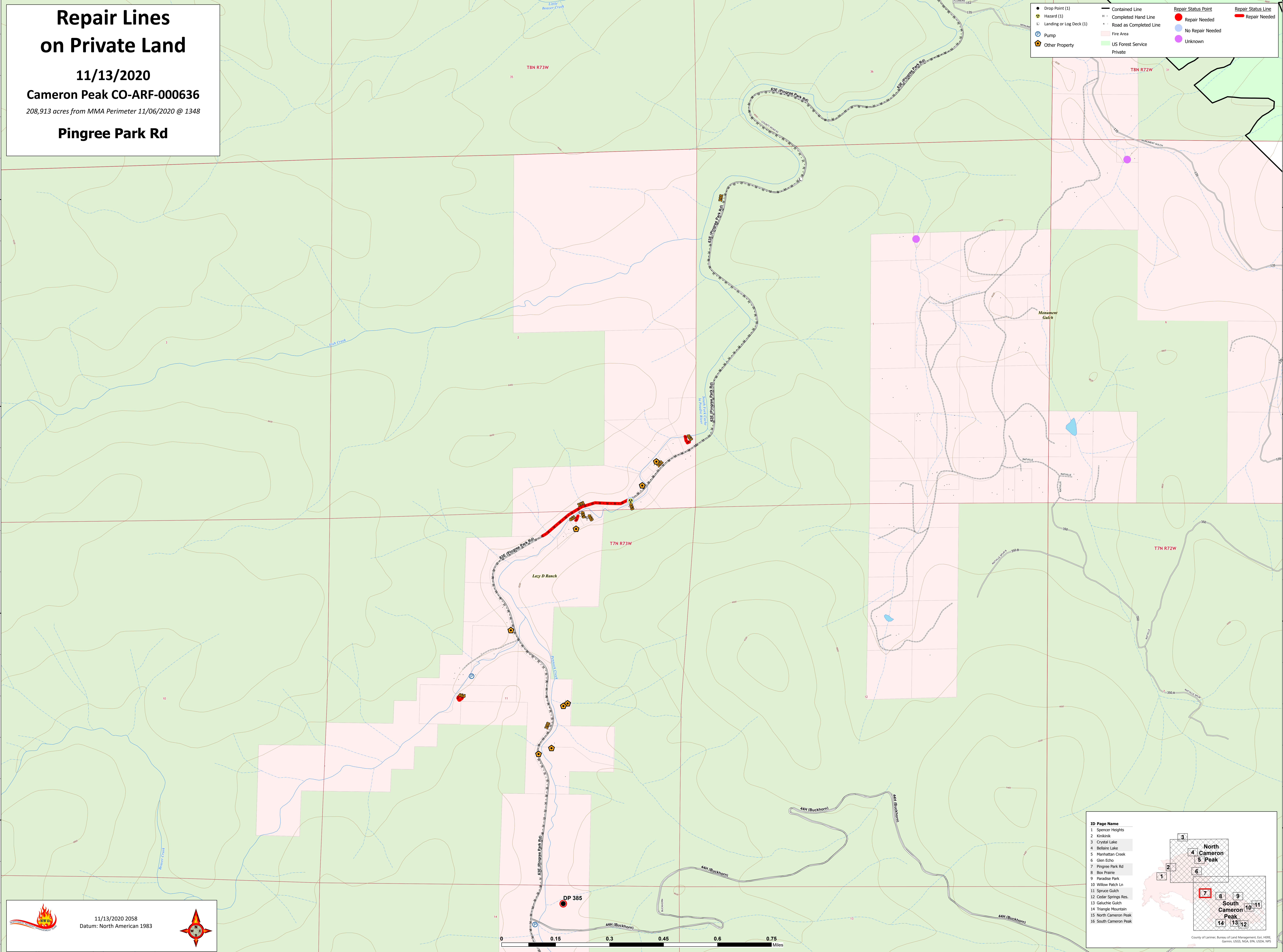
11/13/2020

Cameron Peak CO-ARF-000636

208,913 acres from MMA Perimeter 11/06/2020 @ 1348

Pingree Park Rd

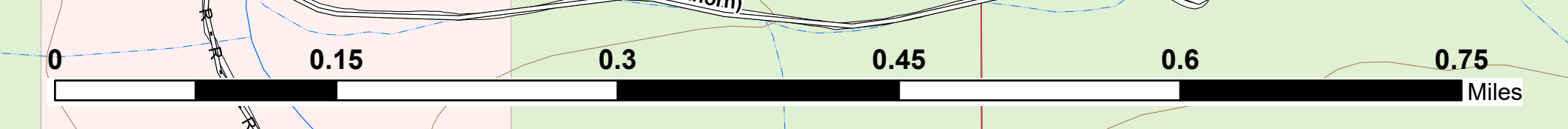
● Drop Point (1)	— Contained Line	● Repair Status Point	— Repair Status Line
▲ Hazard (1)	— Completed Hand Line	● Repair Needed	— Repair Needed
⊠ Landing or Log Deck (1)	— Road as Completed Line	● No Repair Needed	
⊕ Pump	— Fire Area	● Unknown	
⬠ Other Property	— US Forest Service Private		



ID Page Name

1	Spencer Heights
2	Kirkland
3	Crystal Lake
4	Bellaire Lake
5	Manhattan Creek
6	Glen Echo
7	Pingree Park Rd
8	Box Prairie
9	Paradise Park
10	Willow Patch Ln
11	Spruce Gulch
12	Cedar Springs Res.
13	Galuchie Gulch
14	Triangle Mountain
15	North Cameron Peak
16	South Cameron Peak

11/13/2020 2058
Datum: North American 1983



County of Larimer, Bureau of Land Management, GIS, HERE, Garmin, USGS, NOAA, EPA, USDA, NPS