

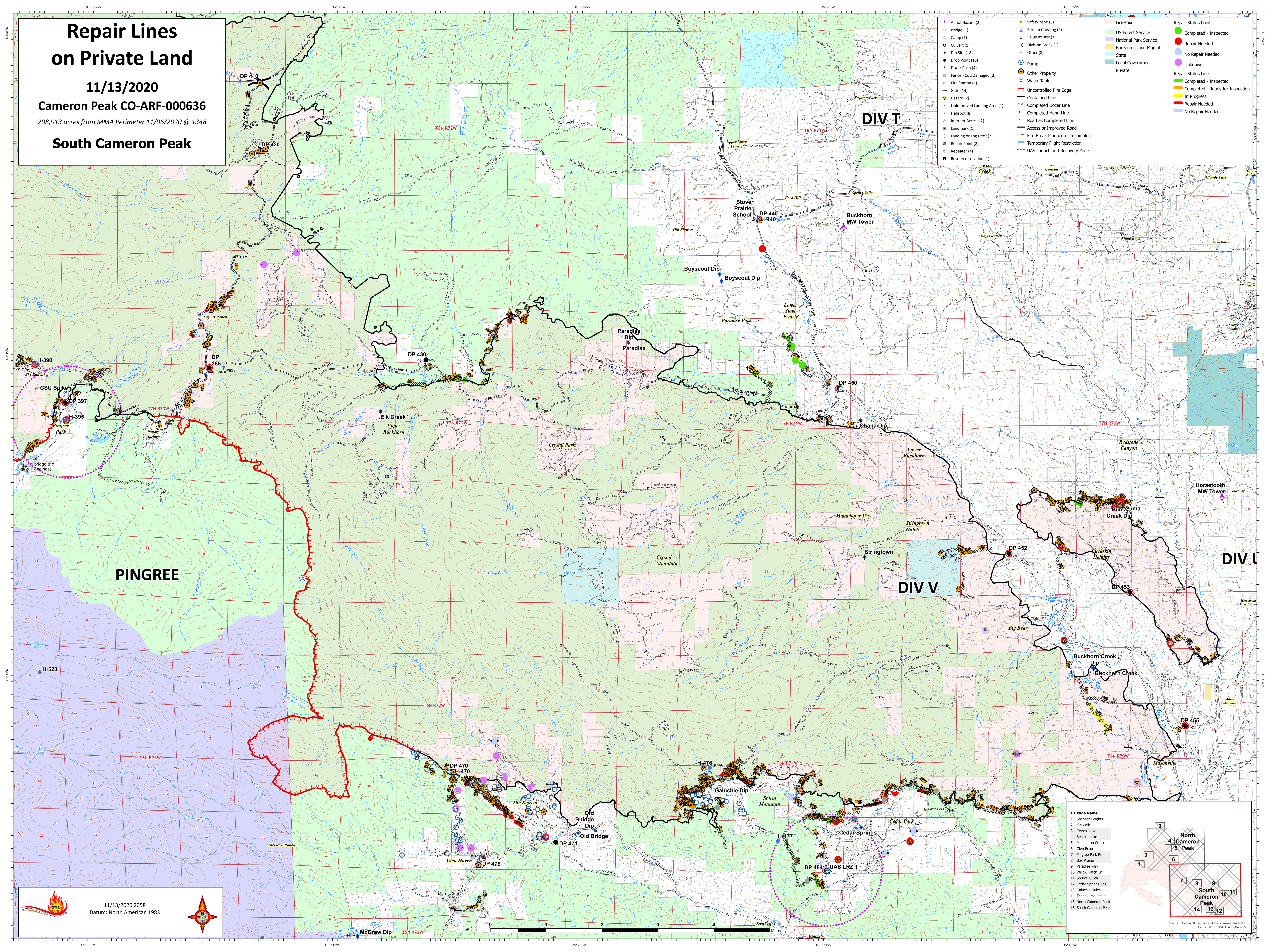
# Repair Lines on Private Land

11/13/2020

Cameron Peak CO-ARF-000636

208,913 acres from MMA Perimeter 11/06/2020 @ 1348

## South Cameron Peak



- Aerial Hazard (2)
- Bridge (1)
- Camp (1)
- Culvert (1)
- Dip Site (18)
- Drop Point (15)
- Dozer Push (4)
- Fence - Cut/Damaged (3)
- Gate (14)
- Hazard (2)
- Unimproved Landing Area (1)
- Heliport (8)
- Internet Access (2)
- Landmark (1)
- Landing or Log Deck (7)
- Repair Point (2)
- Repeater (4)
- Resource Location (1)
- Safety Zone (5)
- Stream Crossing (2)
- Value at Risk (1)
- Division Break (1)
- Other (8)
- Pump
- Other Property
- Water Tank
- Fire Station (1)
- Gate (14)
- Unimproved Landing Area (1)
- Heliport (8)
- Internet Access (2)
- Landmark (1)
- Landing or Log Deck (7)
- Repair Point (2)
- Repeater (4)
- Resource Location (1)
- Fire Area
- US Forest Service
- National Park Service
- Bureau of Land Mgmt
- State
- Local Government
- Private
- Repair Status Point
- Completed - Inspected
- Repair Needed
- No Repair Needed
- Unknown
- Repair Status Line
- Completed - Inspected
- Completed - Ready for Inspection
- In Progress
- Repair Needed
- No Repair Needed
- Uncontrolled Fire Edge
- Contained Line
- Completed Dozer Line
- Completed Hand Line
- Road as Completed Line
- Access or Improved Road
- Fire Break Planned or Incomplete
- Temporary Flight Restriction
- UAS Launch and Recovery Zone

11/13/2020 2058  
Datum: North American 1983

ID Page Name

1	Spencer Heights
2	Kristal Lake
3	Crystal Lake
4	Bellare Lake
5	Manhattan Creek
6	Glen Echo
7	Pingree Park Rd
8	Box Prairie
9	Paradise Park
10	Willow Patch Ln
11	Spruce Gulch
12	Cedar Springs Res.
13	Galuchie Gulch
14	Triangle Mountain
15	North Cameron Peak
16	South Cameron Peak