

Repair Lines on Private Land

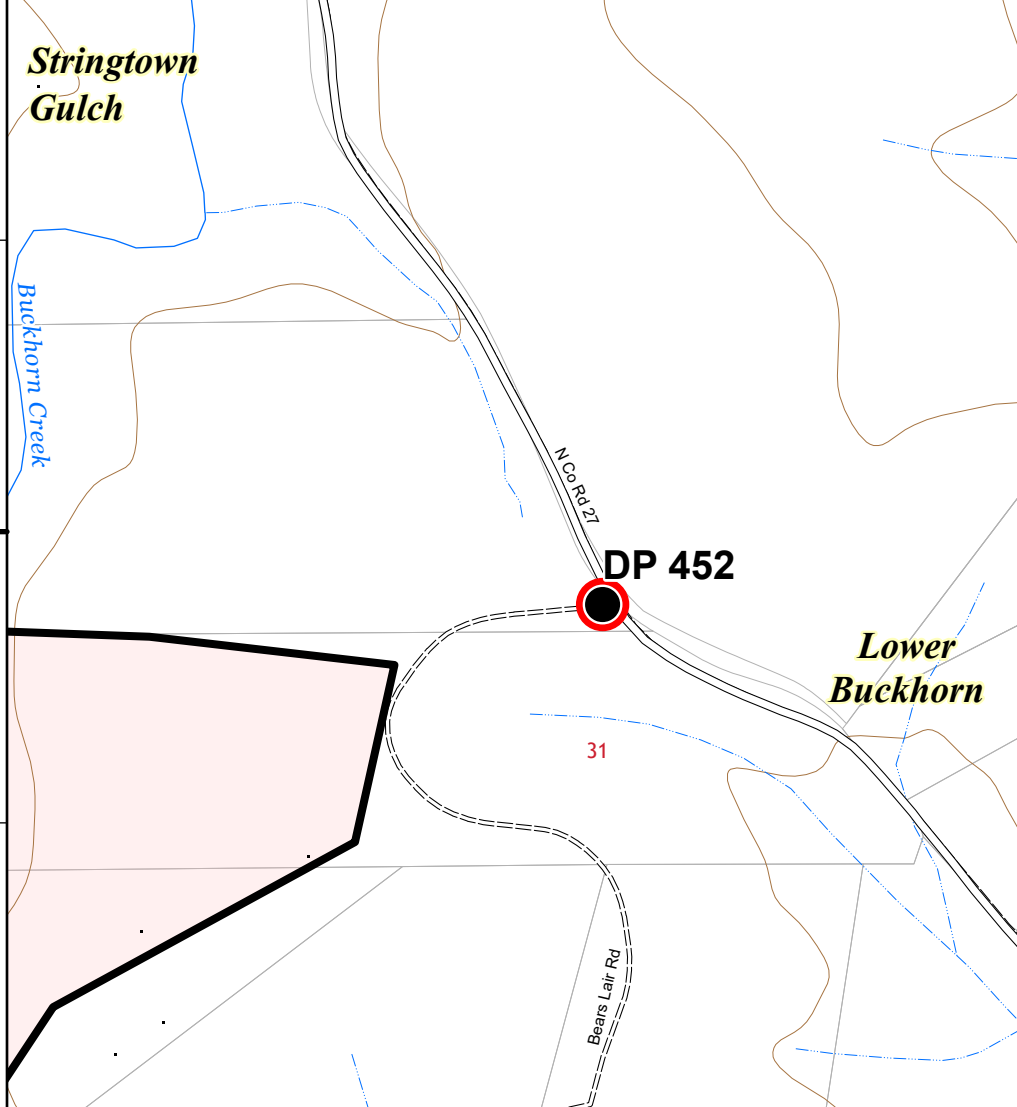
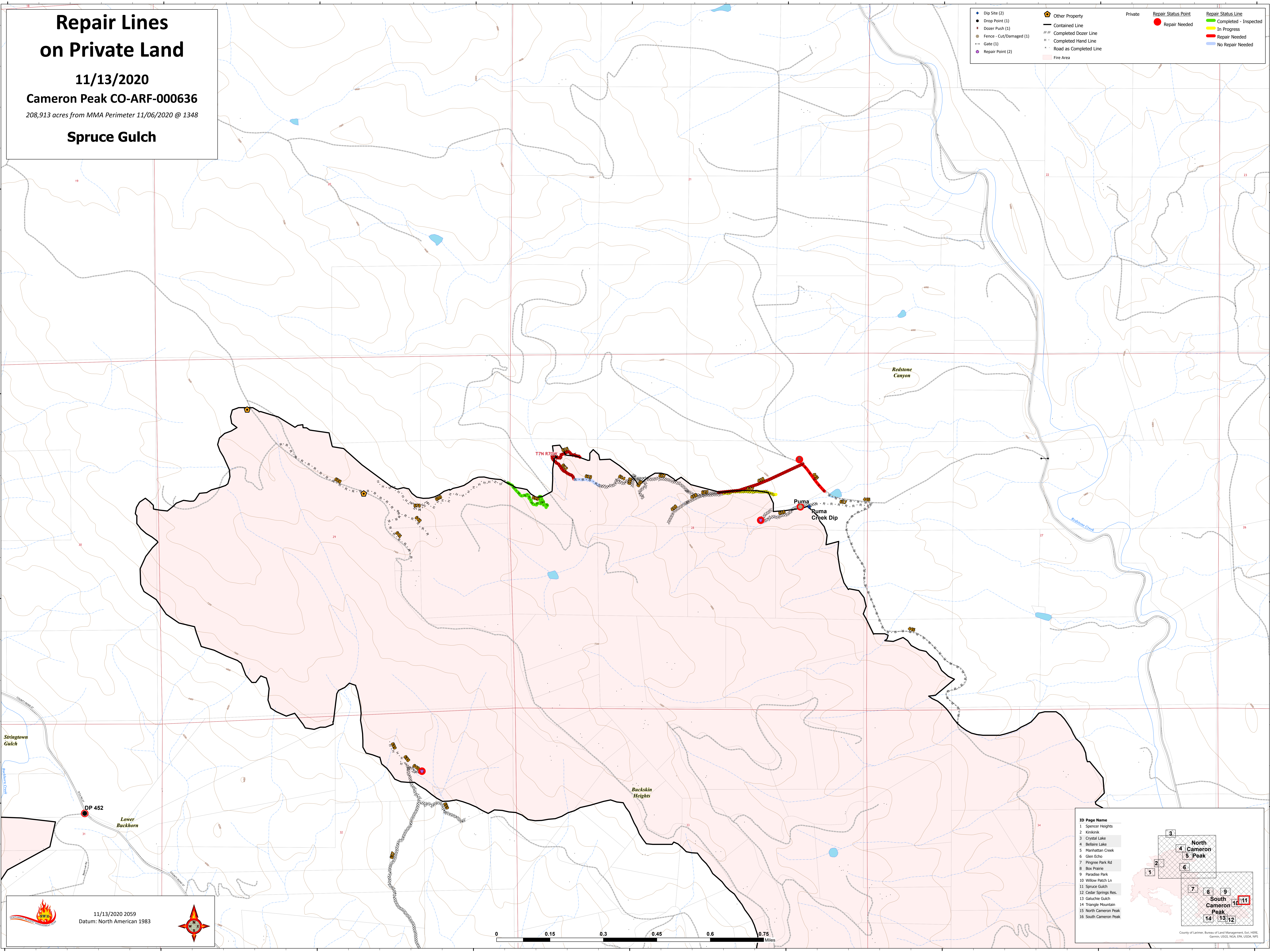
11/13/2020

Cameron Peak CO-ARF-000636

208,913 acres from MMA Perimeter 11/06/2020 @ 1348

Spruce Gulch

◆ Dip Site (2)	Other Property	Private	● Repair Status Point	Repair Status Line
● Drop Point (1)	— Contained Line		● Repair Needed	— Completed - Inspected
■ Dozer Push (1)	--- Completed Dozer Line			— In Progress
■ Fence - Cut/Damaged (1)	--- Completed Hand Line			— Repair Needed
— Gate (1)	--- Road as Completed Line			— No Repair Needed
● Repair Point (2)	■ Fire Area			



ID Page Name

1	Spencer Heights
2	Kohliak
3	Crystal Lake
4	Bellaire Lake
5	Manhattan Creek
6	Glen Echo
7	Pingree Park Rd
8	Box Prairie
9	Paradise Park
10	Willow Patch Ln
11	Spruce Gulch
12	Cedar Springs Res.
13	Galuchie Gulch
14	Triangle Mountain
15	North Cameron Peak
16	South Cameron Peak

County of Larimer, Bureau of Land Management, GIS, HERE, Garmin, USGS, NOAA, EPA, USDA, NPS

11/13/2020 2059
Datum: North American 1983

