

# Repair Lines on Private Land

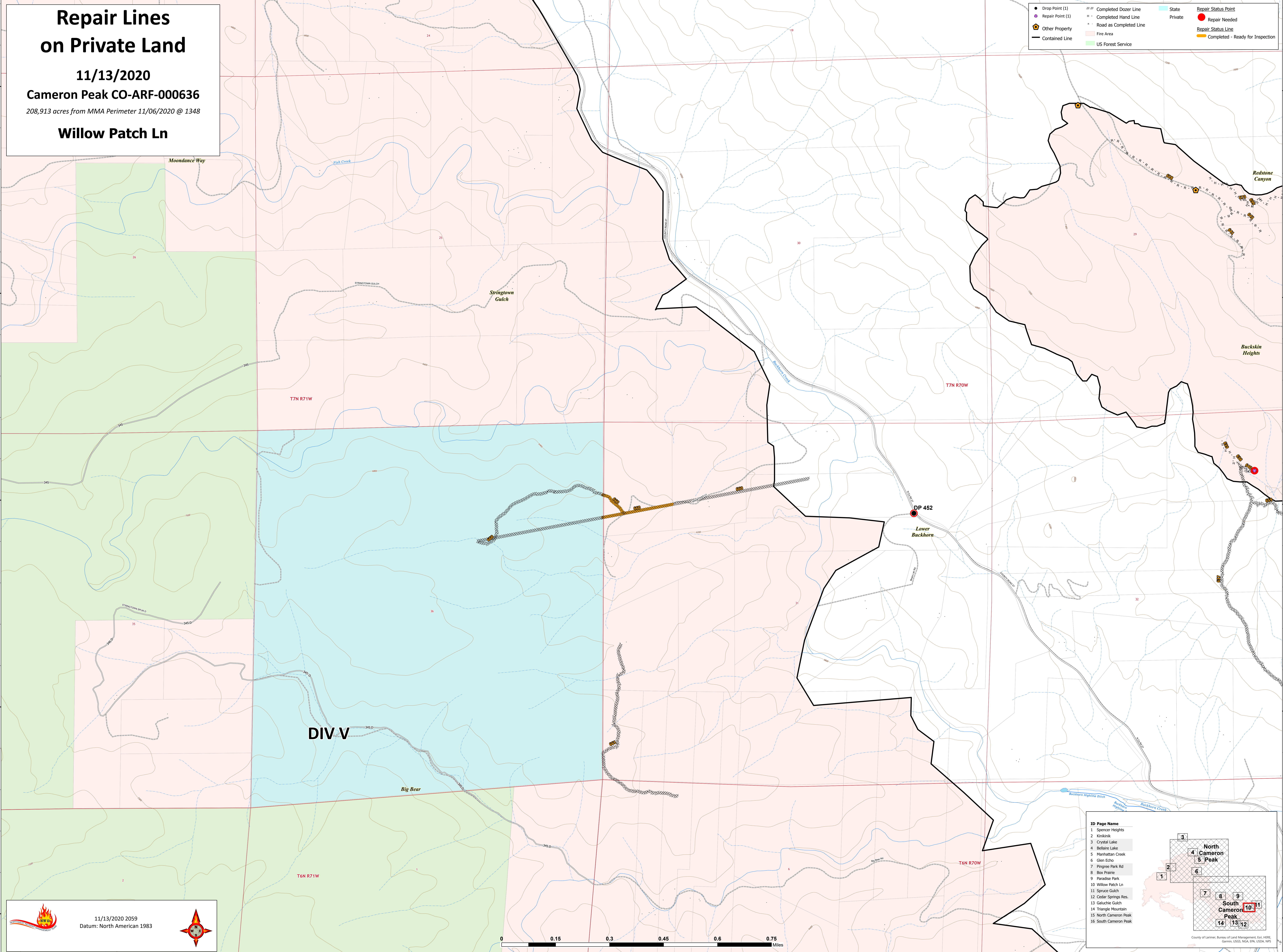
11/13/2020

Cameron Peak CO-ARF-000636

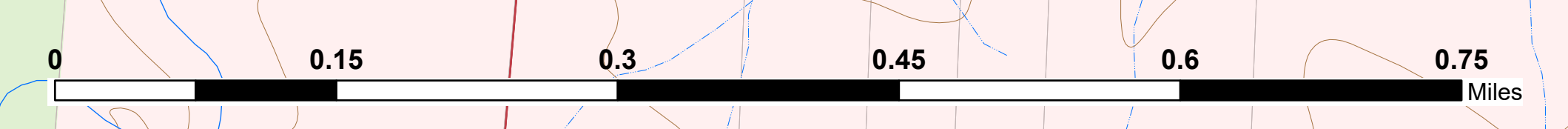
208,913 acres from MMA Perimeter 11/06/2020 @ 1348

Willow Patch Ln

● Drop Point (1)	--- Completed Dozer Line	State	● Repair Status Point
● Repair Point (1)	--- Completed Hand Line	Private	● Repair Needed
🏠 Other Property	--- Road as Completed Line		--- Repair Status Line
— Contained Line	Fire Area		--- Completed - Ready for Inspection
	US Forest Service		



11/13/2020 2059  
Datum: North American 1983



**ID Page Name**

- Spencer Heights
- Kirkland
- Crystal Lake
- Bellaire Lake
- Manhattan Creek
- Glen Echo
- Pingree Park Rd
- Box Prairie
- Paradise Park
- Willow Patch Ln
- Spruce Gulch
- Cedar Springs Res.
- Galuchie Gulch
- Triangle Mountain
- North Cameron Peak
- South Cameron Peak

County of Larimer, Bureau of Land Management, GIS, HERE, Garmin, USGS, NOAA, EPA, USDA, NPS