

Repair Lines on Private Land

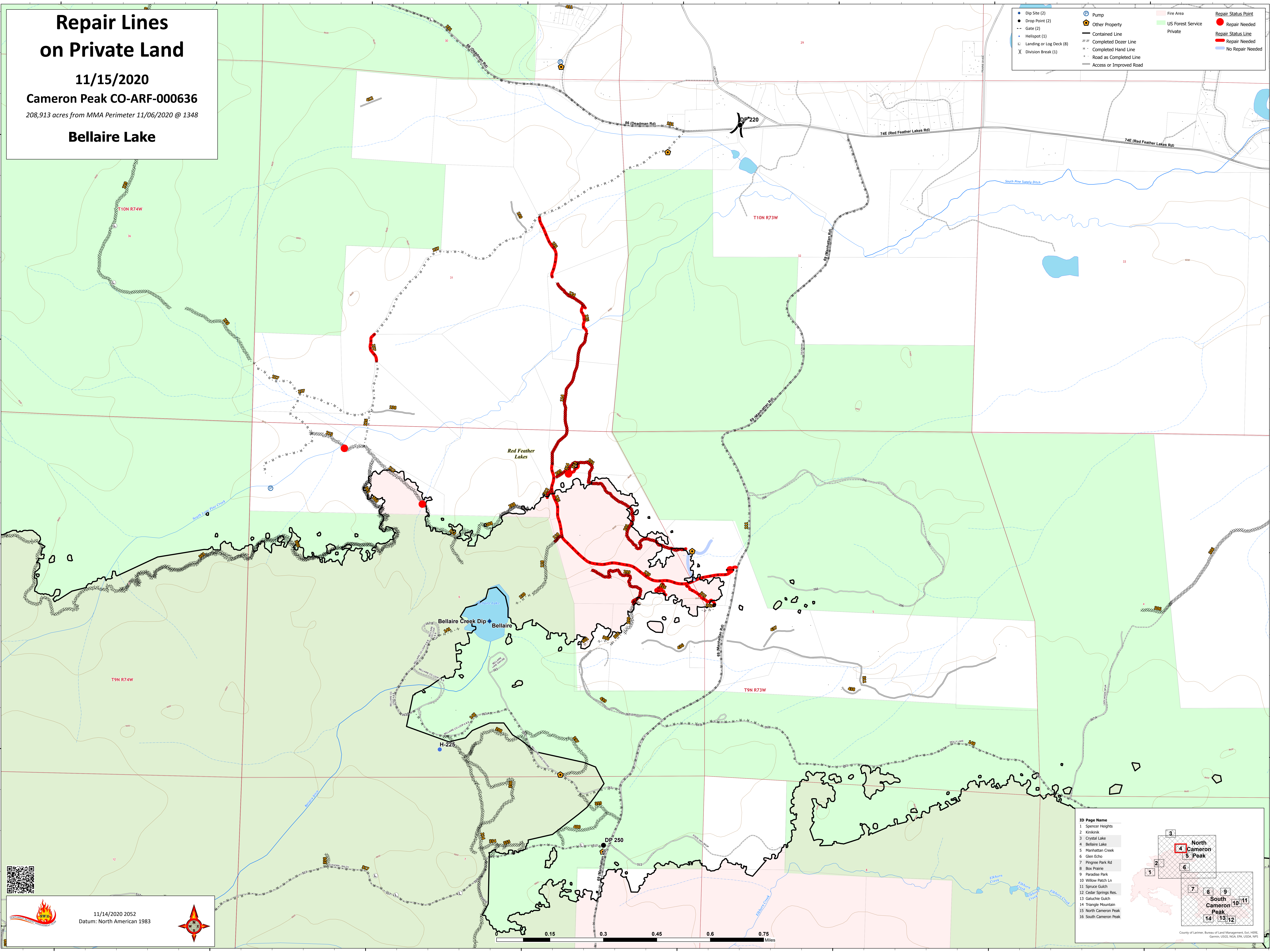
11/15/2020

Cameron Peak CO-ARF-000636

208,913 acres from MMA Perimeter 11/06/2020 @ 1348

Bellaire Lake

● Dip Site (2)	⊕ Pump	■ Fire Area	● Repair Status Point
● Drop Point (2)	⬢ Other Property	■ US Forest Service	● Repair Needed
--- Gate (2)	▭ Contained Line	■ Private	▬ Repair Status Line
● Helispot (1)	▬ Completed Dozer Line		▬ Repair Needed
○ Landing or Log Deck (8)	▬ Completed Hand Line		▬ No Repair Needed
X Division Break (1)	▬ Road as Completed Line		
	▬ Access or Improved Road		



11/14/2020 2052
Datum: North American 1983



ID Page Name

- Spencer Heights
- Kirkland
- Crystal Lake
- Bellaire Lake
- Manhattan Creek
- Glen Echo
- Pingree Park Rd
- Box Prairie
- Paradise Park
- Willow Patch Ln
- Spruce Gulch
- Cedar Springs Res.
- Galuchie Gulch
- Triangle Mountain
- North Cameron Peak
- South Cameron Peak

County of Larimer, Bureau of Land Management, Esri, HERE, Garmin, USGS, NOAA, EPA, USDA, NPS