

# Repair Lines on Private Land

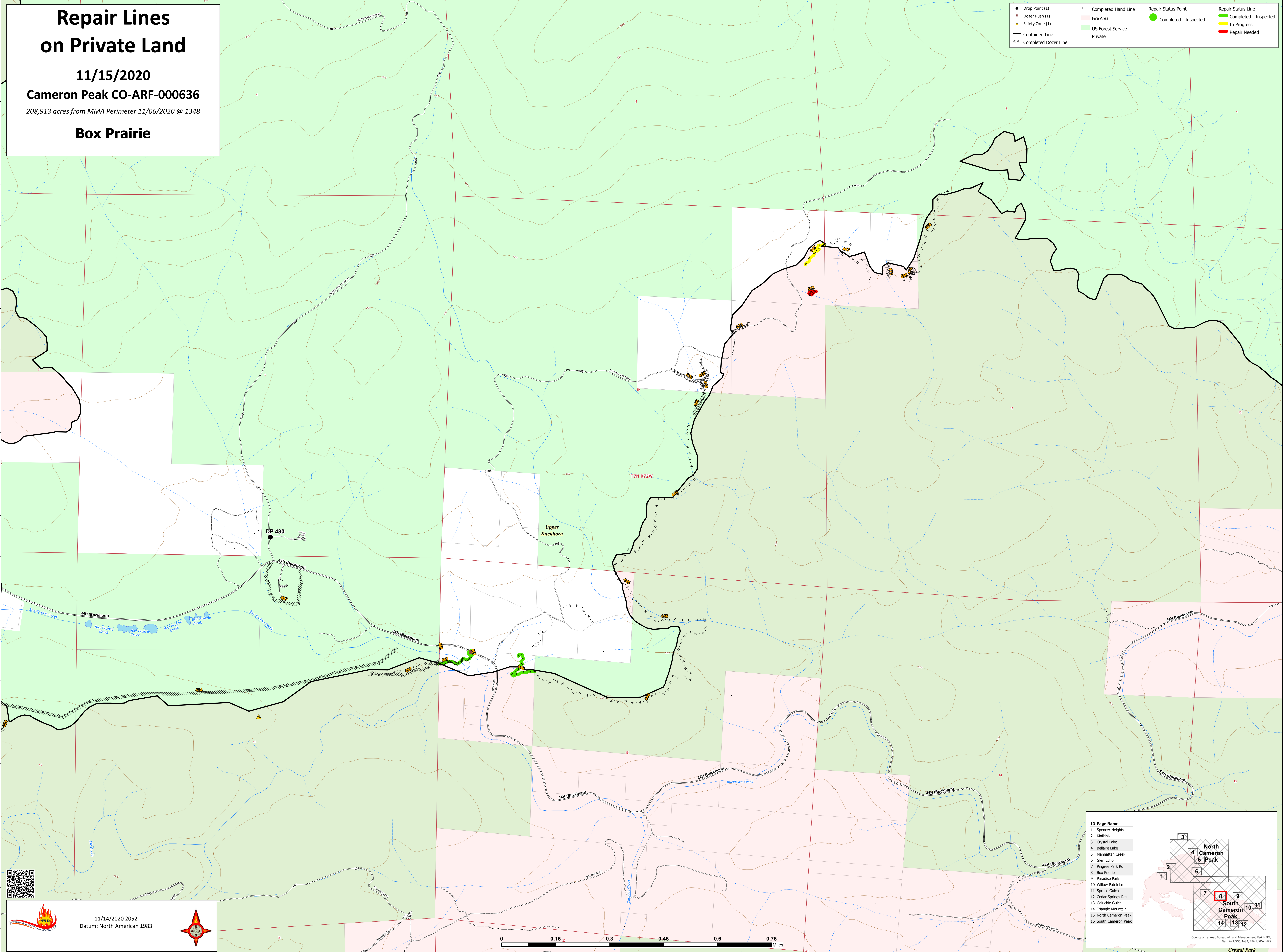
11/15/2020

Cameron Peak CO-ARF-000636

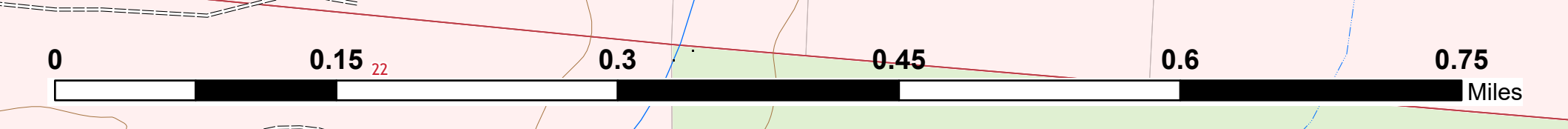
208,913 acres from MMA Perimeter 11/06/2020 @ 1348

Box Prairie

● Drop Point (1)	--- Completed Hand Line	● Repair Status Point	● Repair Status Line
■ Dozer Push (1)	■ Fire Area	● Completed - Inspected	● Completed - Inspected
▲ Safety Zone (1)	■ US Forest Service	● In Progress	● In Progress
— Contained Line	■ Private	● Repair Needed	● Repair Needed
--- Completed Dozer Line			



11/14/2020 2052  
Datum: North American 1983



**ID Page Name**

- 1 Spencer Heights
- 2 Kiriakak
- 3 Crystal Lake
- 4 Bellaire Lake
- 5 Manhattan Creek
- 6 Glen Echo
- 7 Pingree Park Rd
- 8 Box Prairie
- 9 Paradise Park
- 10 Willow Patch Ln
- 11 Spruce Gulch
- 12 Cedar Springs Res.
- 13 Galuchie Gulch
- 14 Triangle Mountain
- 15 North Cameron Peak
- 16 South Cameron Peak

County of Larimer, Bureau of Land Management, GIS, HERE, Garmin, USGS, NOAA, EPA, USDA, NPS

Crystal Park