

Repair Lines on Private Land

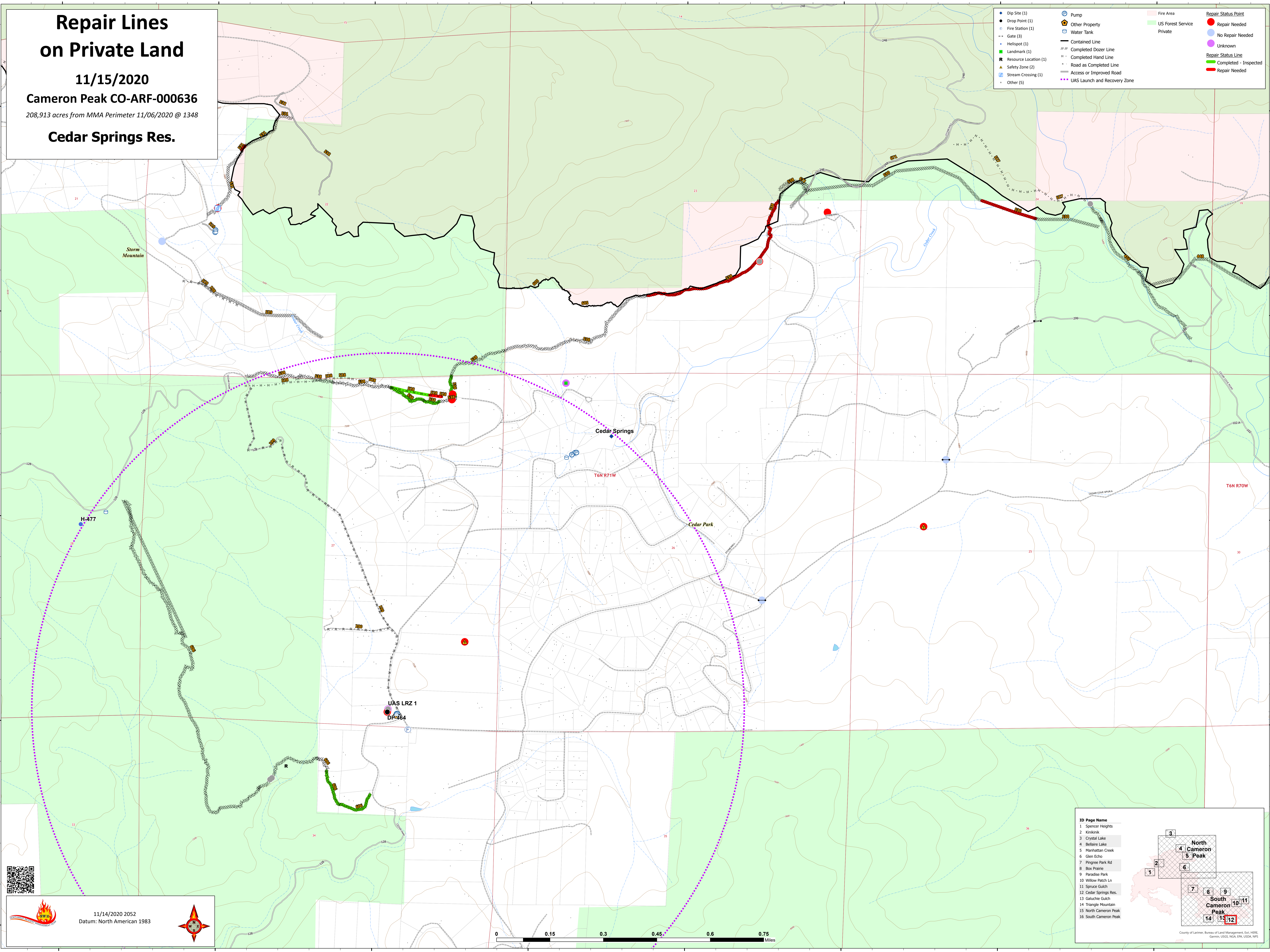
11/15/2020

Cameron Peak CO-ARF-000636

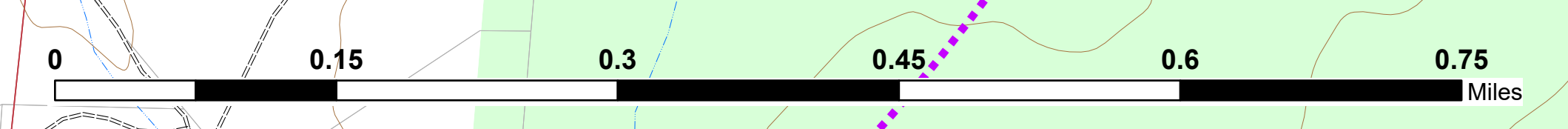
208,913 acres from MMA Perimeter 11/06/2020 @ 1348

Cedar Springs Res.

● Dip Site (1)	⊕ Pump	■ Fire Area	● Repair Status Point
● Fire Station (1)	🏠 Other Property	■ US Forest Service	● No Repair Needed
--- Gate (3)	🚰 Water Tank	■ Private	● Unknown
● Helispot (1)	— Contained Line		— Repair Status Line
■ Landmark (1)	— Completed Dozer Line		— Completed - Inspected
■ Resource Location (1)	— Completed Hand Line		— Repair Needed
▲ Safety Zone (2)	— Road as Completed Line		
🚰 Stream Crossing (1)	— Access or Improved Road		
• Other (5)	— UAS Launch and Recovery Zone		



11/14/2020 2052
Datum: North American 1983



ID Page Name

- Spencer Heights
- Kivirikak
- Crystal Lake
- Bellaire Lake
- Manhattan Creek
- Glen Echo
- Pingree Park Rd
- Box Prairie
- Paradise Park
- Willow Patch Ln
- Spruce Gulch
- Cedar Springs Res.
- Galuchie Gulch
- Triangle Mountain
- North Cameron Peak
- South Cameron Peak

County of Larimer, Bureau of Land Management, Esri, HERE, Garmin, USGS, NSA, ERI, USDA, NPS