

Repair Lines on Private Land

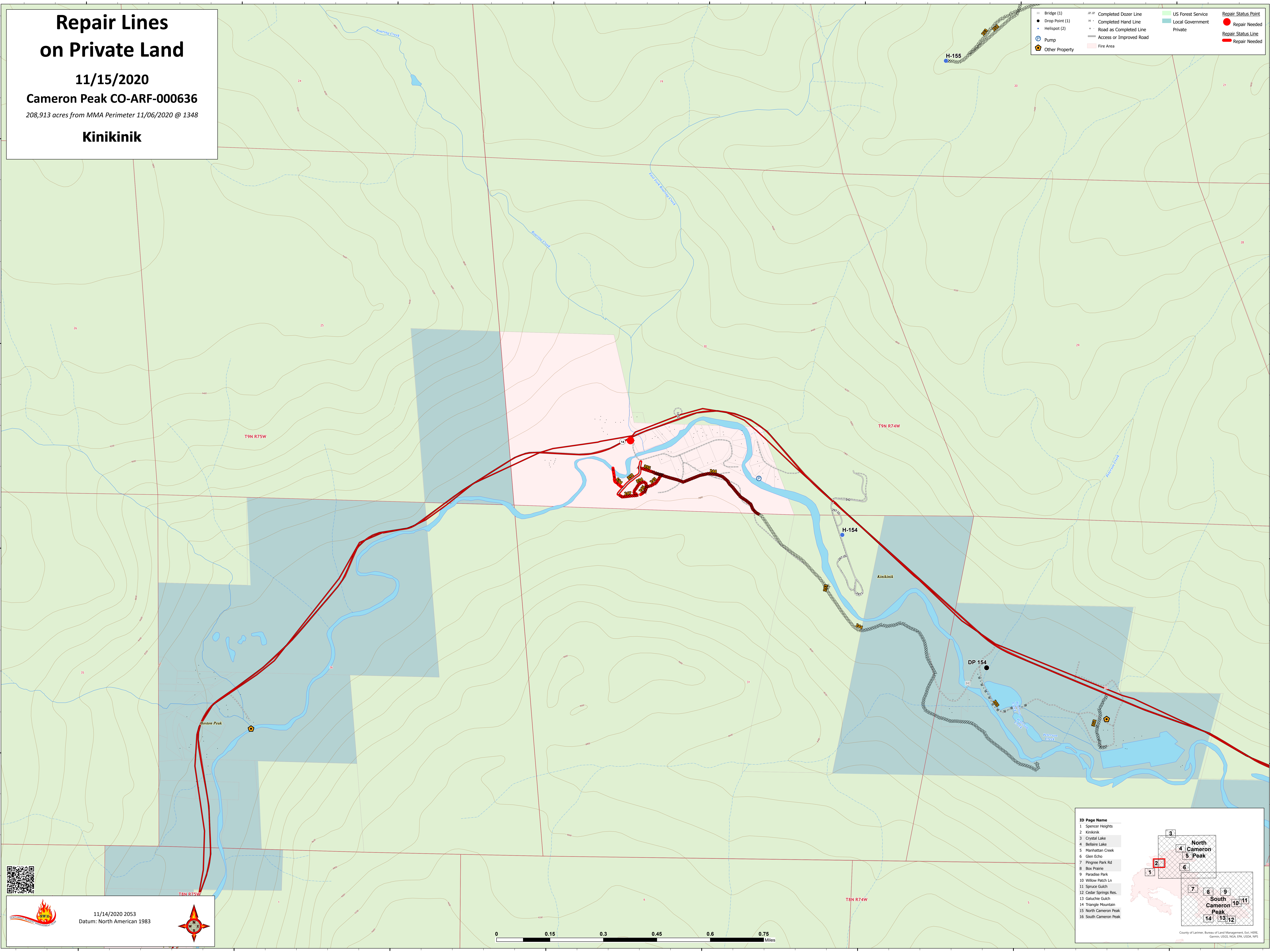
11/15/2020

Cameron Peak CO-ARF-000636

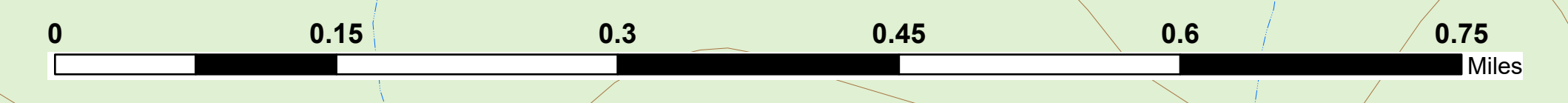
208,913 acres from MMA Perimeter 11/06/2020 @ 1348

Kinikini

Bridge (1)	Completed Dozer Line	US Forest Service	Repair Status Point
Drop Point (1)	Completed Hand Line	Local Government	Repair Needed
Helispot (2)	Road as Completed Line	Private	Repair Status Line
Pump	Access or Improved Road		Repair Needed
Other Property	Fire Area		Repair Needed



11/14/2020 2053
Datum: North American 1983



ID Page Name

- Spencer Heights
- Kinikini
- Crystal Lake
- Bellaire Lake
- Manhattan Creek
- Glen Echo
- Pingree Park Rd
- Box Prairie
- Paradise Park
- Willow Patch Ln
- Spruce Gulch
- Cedar Springs Res.
- Galuchie Gulch
- Triangle Mountain
- North Cameron Peak
- South Cameron Peak

County of Larimer, Bureau of Land Management, GIS, HERE, Garmin, USGS, NOAA, EPA, USDA, NPS