

# Repair Lines on Private Land

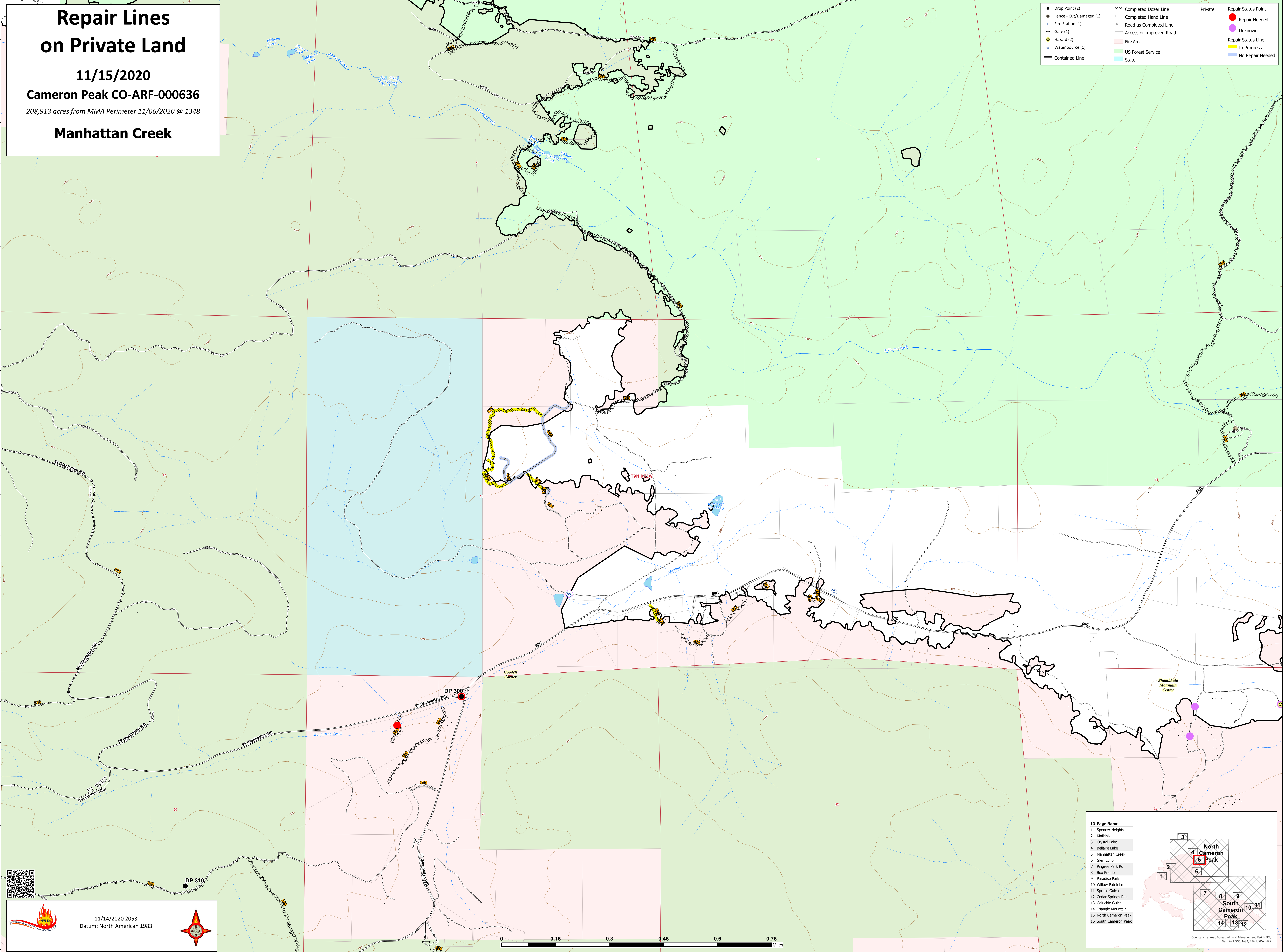

11/15/2020

Cameron Peak CO-ARF-000636


208,913 acres from MMA Perimeter 11/06/2020 @ 1348

Manhattan Creek

● Drop Point (2)	--- Completed Dozer Line	Private	● Repair Status Point
○ Fence - Cut/Damaged (1)	--- Completed Hand Line		● Repair Needed
● Fire Station (1)	--- Road as Completed Line		● Unknown
--- Gate (1)	--- Access or Improved Road		--- Repair Status Line
● Hazard (2)	--- Fire Area		--- In Progress
● Water Source (1)	--- US Forest Service		--- No Repair Needed
--- Contained Line	--- State		

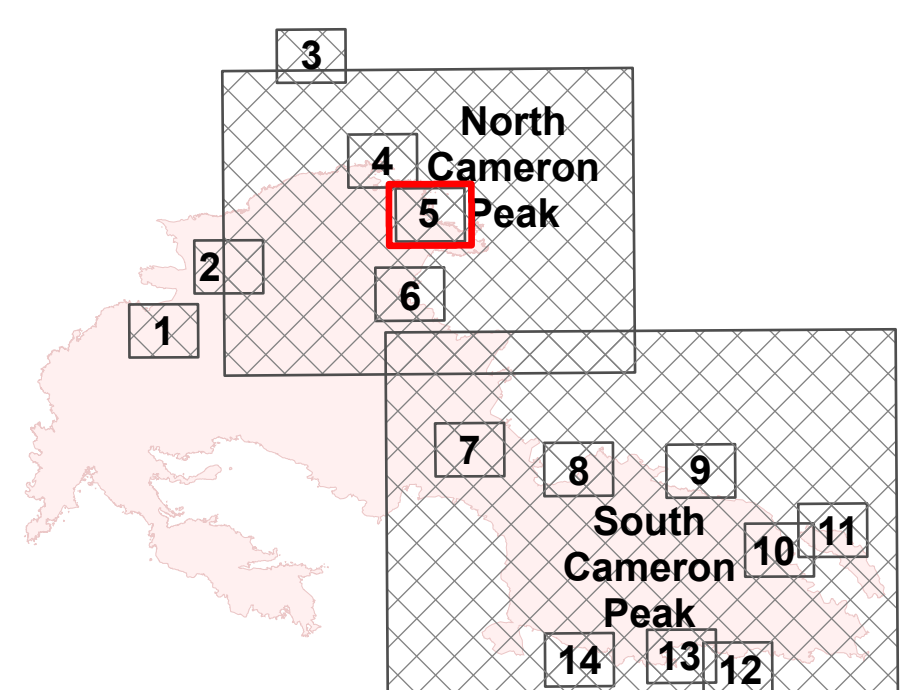



11/14/2020 2053  
Datum: North American 1983



**ID Page Name**

- Spencer Heights
- Konlaxak
- Crystal Lake
- Bellaire Lake
- Manhattan Creek
- Glen Echo
- Pingree Park Rd
- Box Prairie
- Paradise Park
- Willow Patch Ln
- Spruce Gulch
- Cedar Springs Res.
- Galuchie Gulch
- Triangle Mountain
- North Cameron Peak
- South Cameron Peak



County of Larimer, Bureau of Land Management, Esri, HERE, Garmin, USGS, NOAA, EPA, USDA, NPS