

Repair Lines on Private Land

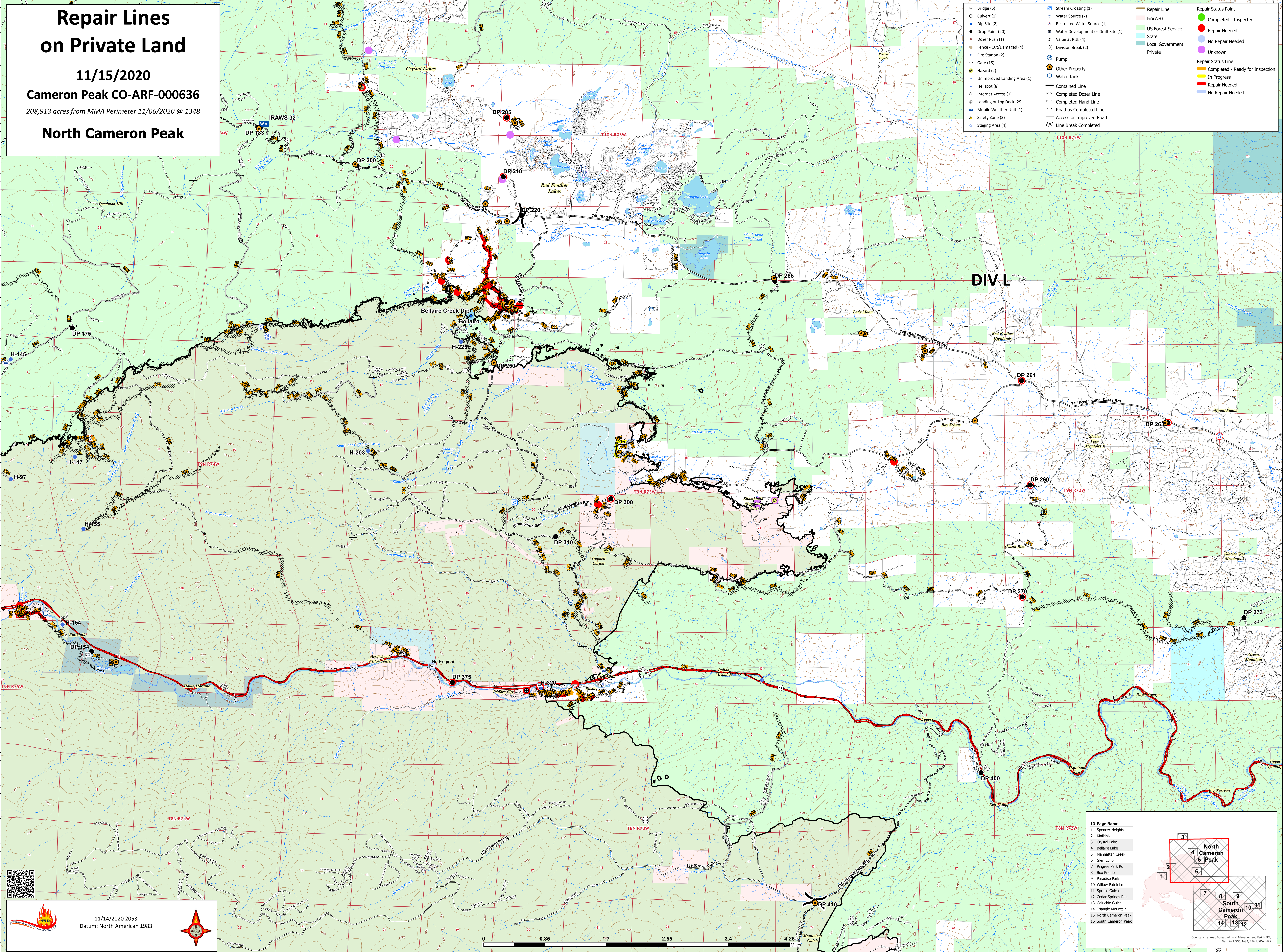
11/15/2020

Cameron Peak CO-ARF-000636

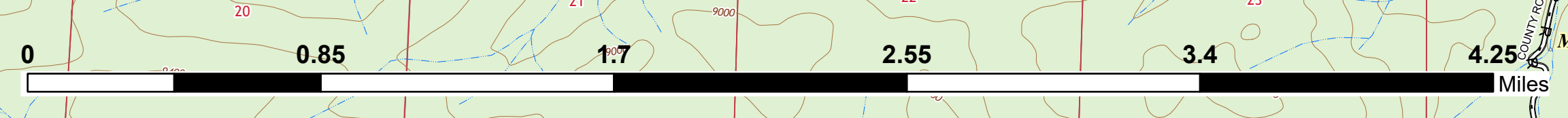
208,913 acres from MMA Perimeter 11/06/2020 @ 1348

North Cameron Peak

○ Bridge (5)	○ Stream Crossing (1)	— Repair Line	● Repair Status Point
● Culvert (1)	○ Water Source (7)	■ Fire Area	● Completed - Inspected
● Dip Site (2)	○ Restricted Water Source (1)	■ US Forest Service	● Repair Needed
● Drop Point (20)	○ Water Development or Draft Site (1)	■ State	● No Repair Needed
● Dozer Push (1)	○ Value at Risk (4)	■ Local Government	● Unknown
● Fence - Cut/Damaged (4)	○ Division Break (2)	■ Private	— Repair Status Line
○ Fire Station (2)	○ Pump	■ Completed - Ready for Inspection	— In Progress
○ Gate (15)	○ Other Property	■ Repair Needed	— No Repair Needed
● Hazard (2)	○ Water Tank	— Contained Line	
● Unimproved Landing Area (1)	— Contained Line	— Completed Dozer Line	
● Helispot (8)	— Contained Line	— Completed Hand Line	
○ Internet Access (1)	— Contained Line	— Road as Completed Line	
○ Landing or Log Deck (29)	— Contained Line	— Access or Improved Road	
○ Mobile Weather Unit (1)	— Contained Line	— Line Break Completed	
○ Safety Zone (2)	— Contained Line		
○ Staging Area (4)	— Contained Line		



11/14/2020 2053
Datum: North American 1983



ID Page Name

- Spencer Heights
- Kristine
- Crystal Lake
- Belleaire Lake
- Manhattan Creek
- Glen Echo
- Pingree Park Rd
- Box Prairie
- Paradise Park
- Willow Patch Ln
- Spruce Gulch
- Cedar Springs Res.
- Galuchie Gulch
- Triangle Mountain
- North Cameron Peak
- South Cameron Peak

County of Larimer, Bureau of Land Management, Esri, HERE, Garmin, USGS, NOAA, EPA, USDA, NPS