

# Repair Lines on Private Land

11/15/2020

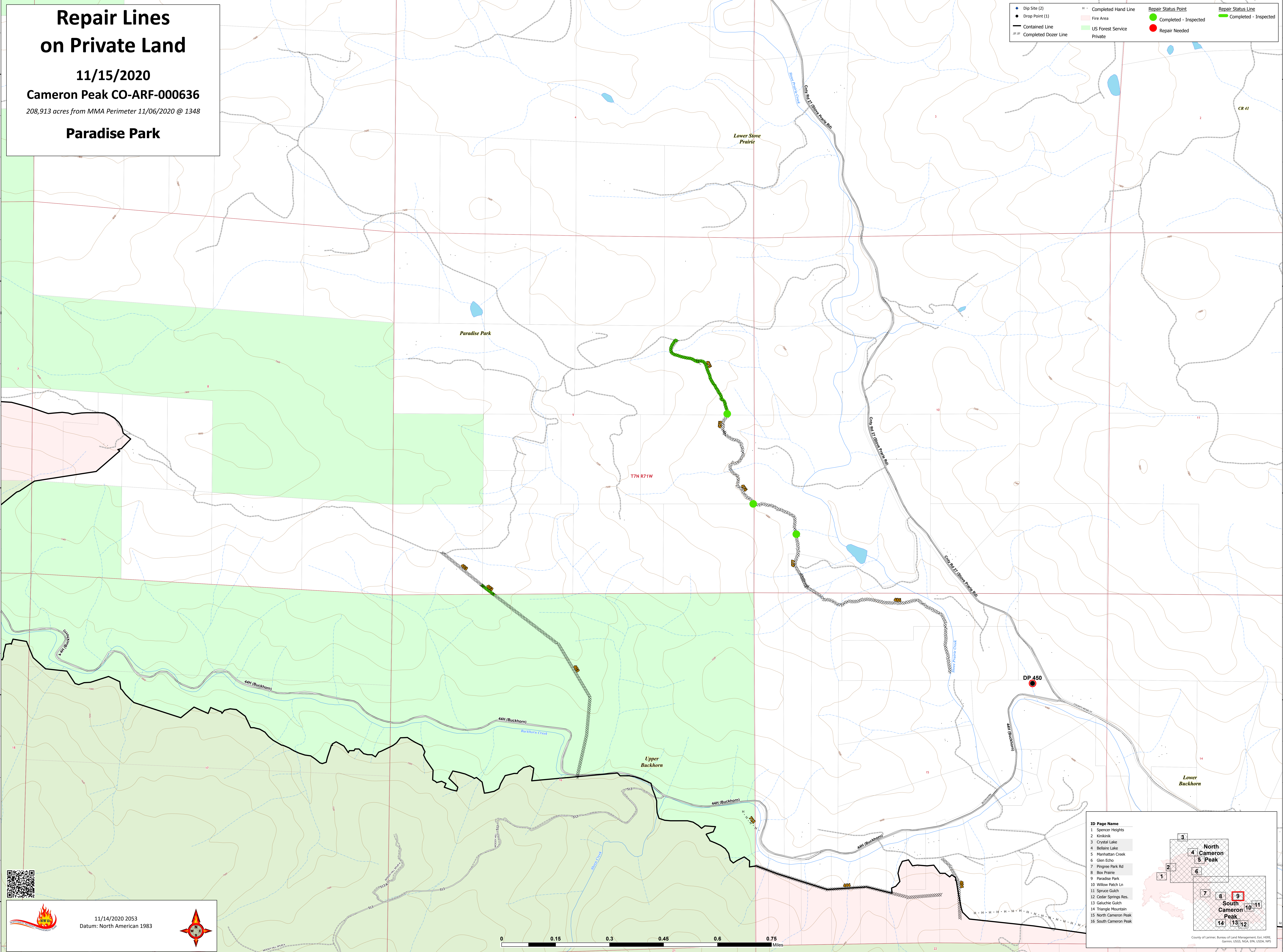
Cameron Peak CO-ARF-000636

208,913 acres from MMA Perimeter 11/06/2020 @ 1348

Paradise Park

Legend:

- Dip Site (2)
- Drop Point (1)
- Contained Line
- Completed Dozer Line
- Completed Hand Line
- Fire Area
- US Forest Service Private
- Repair Status Point
  - Completed - Inspected
  - Repair Needed
- Repair Status Line
  - Completed - Inspected



11/14/2020 2053  
Datum: North American 1983

ID Page Name

1	Spencer Heights
2	Kirkland
3	Crystal Lake
4	Bellaire Lake
5	Manhattan Creek
6	Glen Echo
7	Pingree Park Rd
8	Box Prairie
9	Paradise Park
10	Willow Patch Ln
11	Spruce Gulch
12	Cedar Springs Res.
13	Galuchie Gulch
14	Triangle Mountain
15	North Cameron Peak
16	South Cameron Peak

County of Larimer, Bureau of Land Management, Esri, HERE, Garmin, USGS, NOAA, EPA, USDA, NPS