

Repair Lines on Private Land

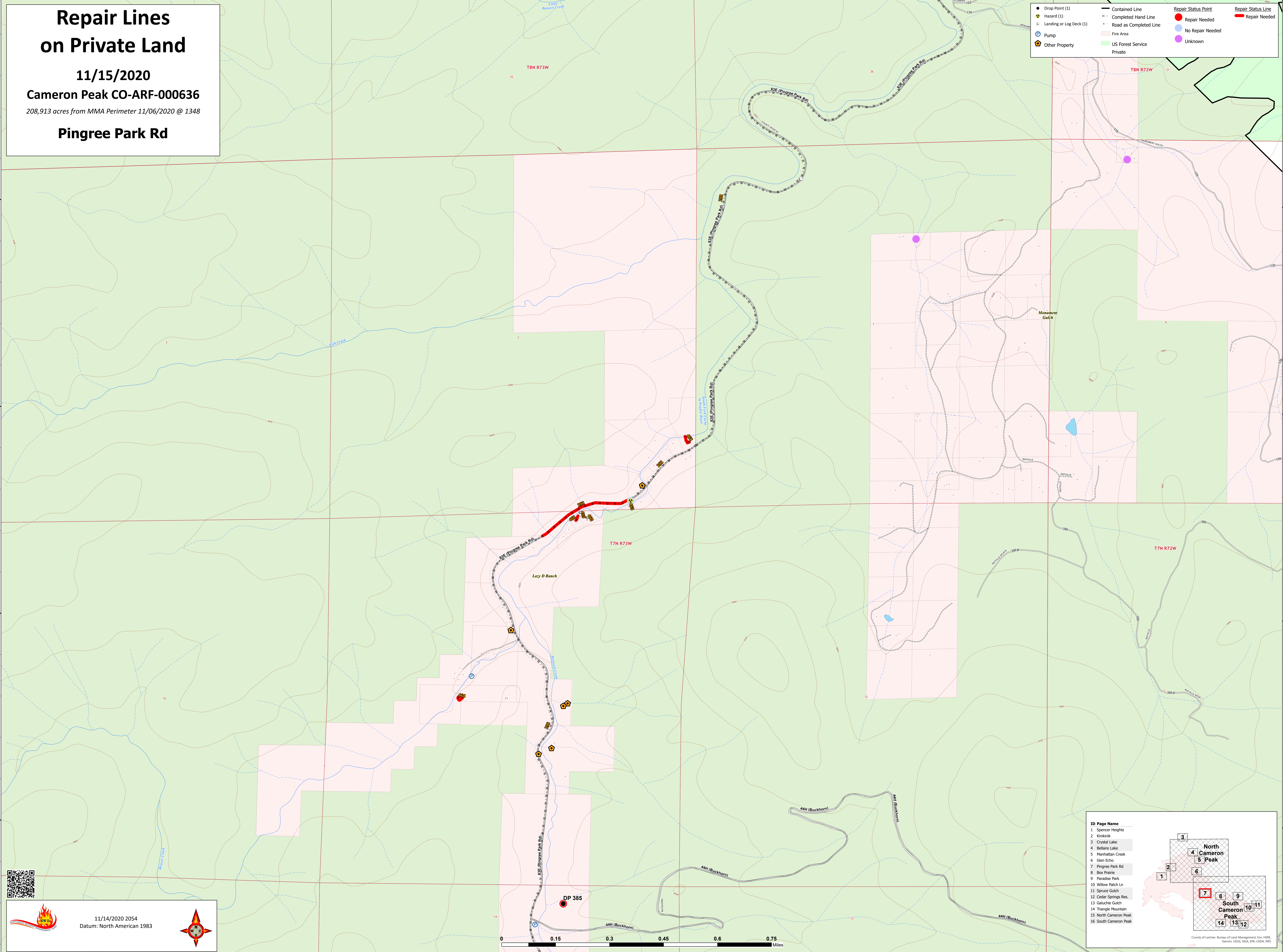
11/15/2020

Cameron Peak CO-ARF-000636

208,913 acres from MMA Perimeter 11/06/2020 @ 1348

Pingree Park Rd

● Drop Point (1)	— Contained Line	● Repair Status Point	— Repair Status Line
▲ Hazard (1)	— Completed Hand Line	● Repair Needed	— Repair Needed
Ⓛ Landing or Log Deck (1)	— Road as Completed Line	● No Repair Needed	
Ⓟ Pump	■ Fire Area	● Unknown	
Ⓜ Other Property	■ US Forest Service Private		



ID Page Name

1	Spencer Heights
2	Kirkland
3	Crystal Lake
4	Bellaire Lake
5	Manhattan Creek
6	Glen Echo
7	Pingree Park Rd
8	Box Prairie
9	Paradise Park
10	Willow Patch Ln
11	Spruce Gulch
12	Cedar Springs Res.
13	Galuchie Gulch
14	Triangle Mountain
15	North Cameron Peak
16	South Cameron Peak

County of Larimer, Bureau of Land Management, GIS, HERE, Garmin, USGS, NOAA, EPA, USDA, NPS

11/14/2020 2054
Datum: North American 1983

