

# Repair Lines on Private Land

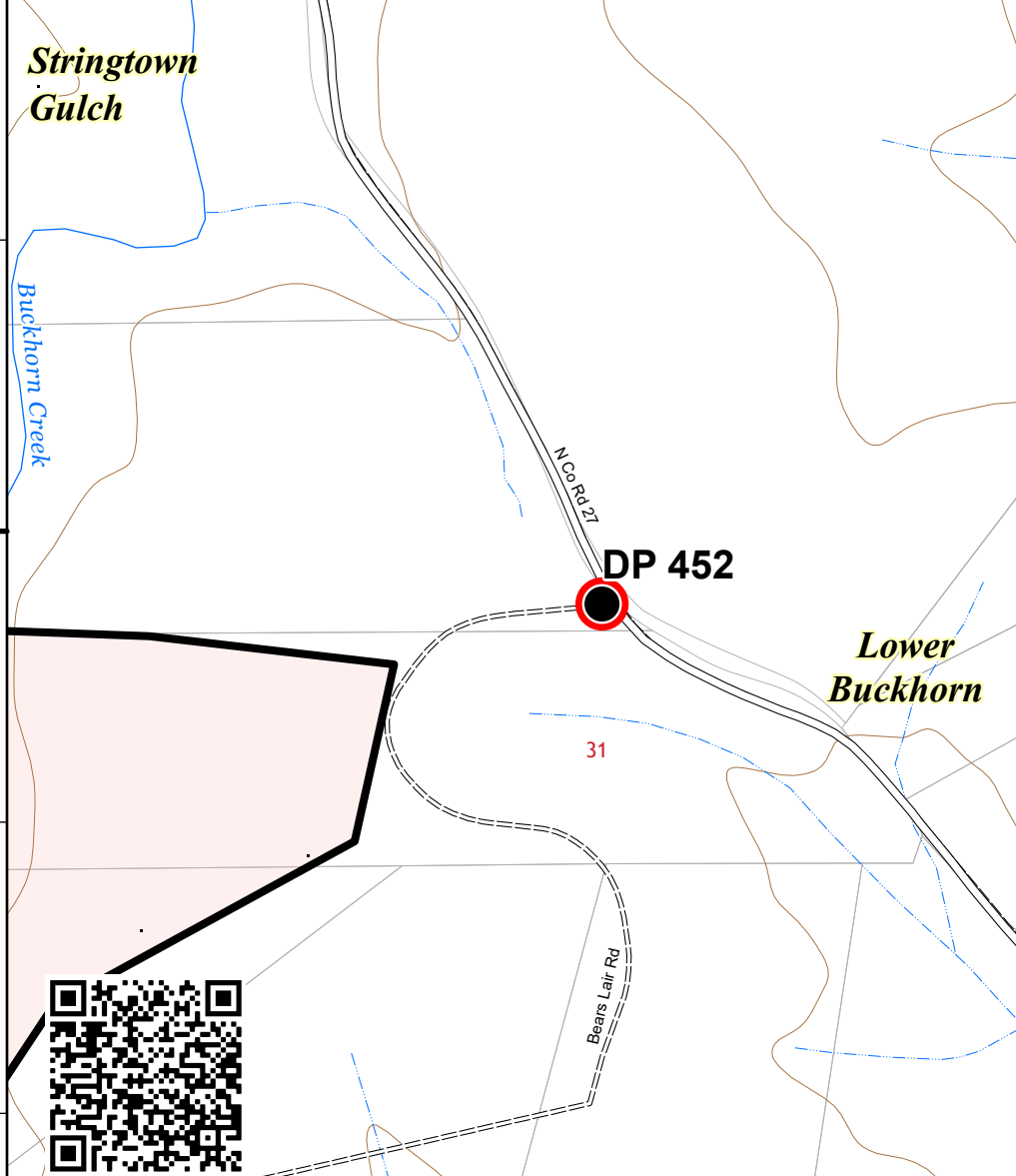
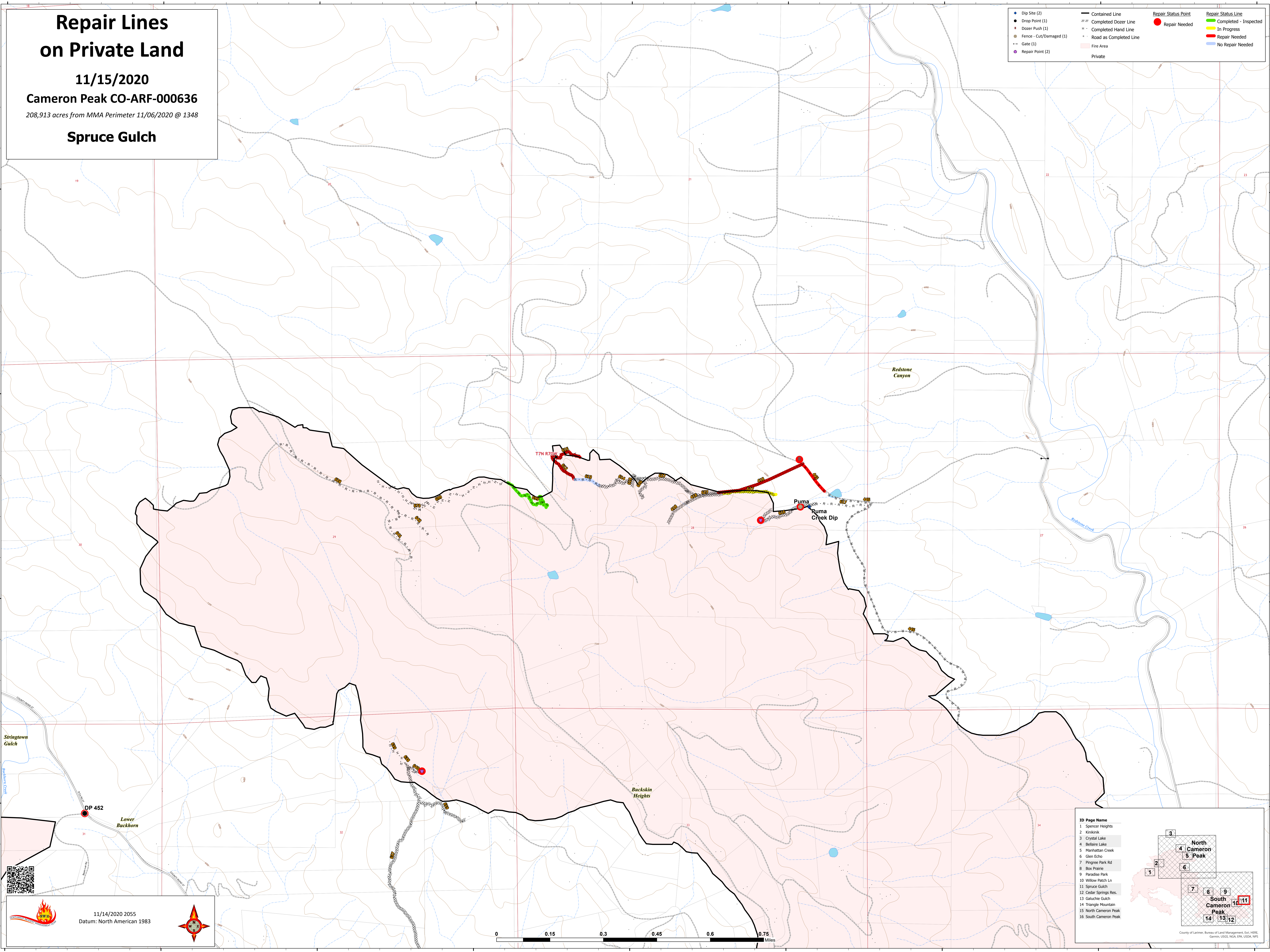
11/15/2020

Cameron Peak CO-ARF-000636

208,913 acres from MMA Perimeter 11/06/2020 @ 1348

Spruce Gulch

Dip Site (2)	Contained Line	Repair Status Point	Repair Status Line
Drop Point (1)	Completed Dozer Line	Repair Needed	Completed - Inspected
Dozer Push (1)	Completed Hand Line	In Progress	Repair Needed
Fence - Cut/Damaged (1)	Road as Completed Line	No Repair Needed	
Gate (1)	Fire Area		
Repair Point (2)	Private		



11/14/2020 2055  
Datum: North American 1983

**ID Page Name**

1	Spencer Heights
2	Kohliak
3	Crystal Lake
4	Bellaire Lake
5	Manhattan Creek
6	Glen Echo
7	Pingree Park Rd
8	Box Prairie
9	Paradise Park
10	Willow Patch Ln
11	Spruce Gulch
12	Cedar Springs Res.
13	Galuchie Gulch
14	Triangle Mountain
15	North Cameron Peak
16	South Cameron Peak

County of Larimer, Bureau of Land Management, GIS, HERE, Garmin, USGS, NOAA, EPA, USDA, NPS