

Repair Lines on Private Land

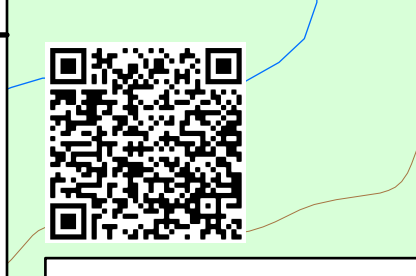
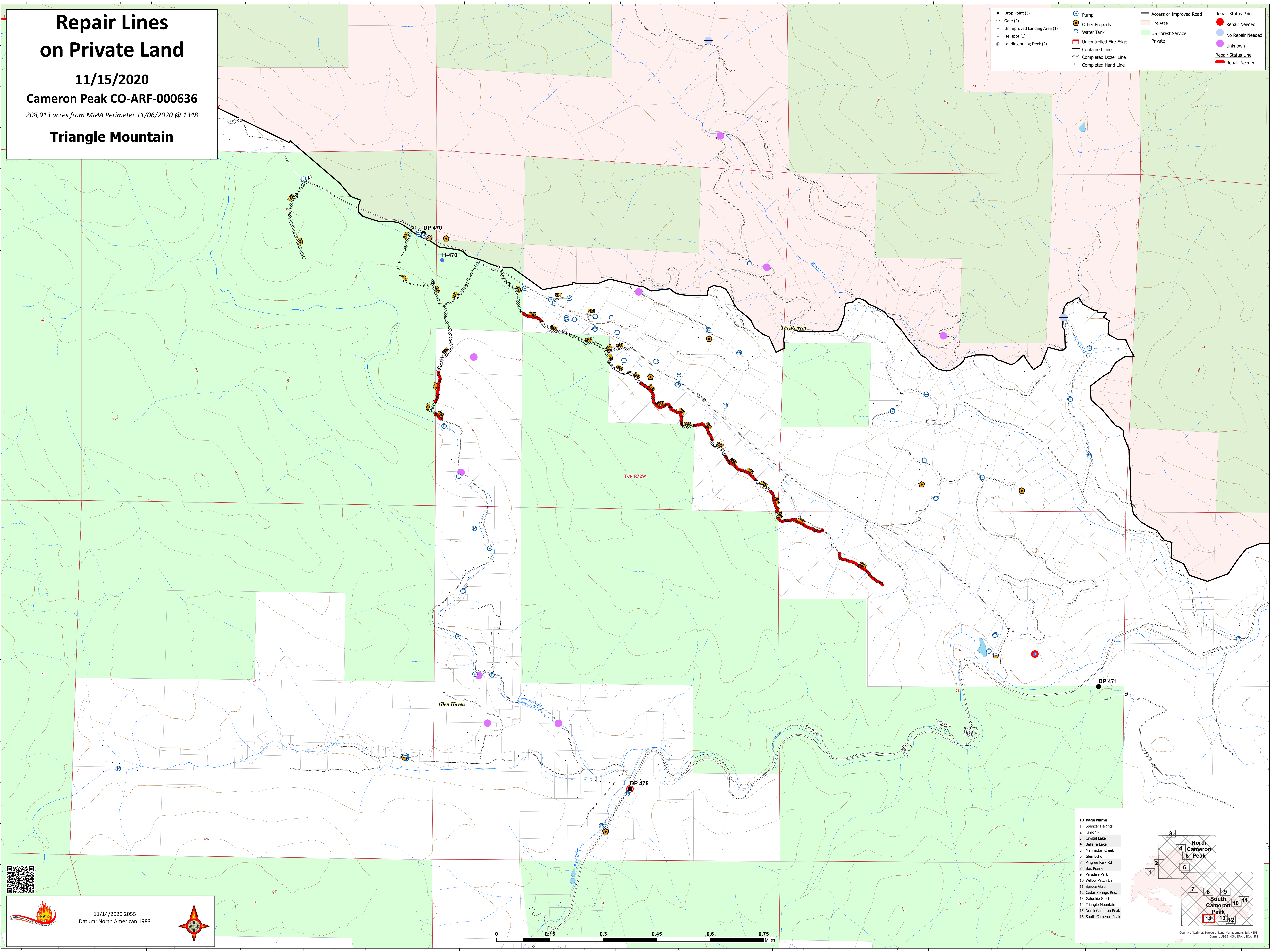
11/15/2020

Cameron Peak CO-ARF-000636

208,913 acres from MMA Perimeter 11/06/2020 @ 1348

Triangle Mountain

● Drop Point (3)	⊕ Pump	— Access or Improved Road	● Repair Status Point
--- Gate (2)	🏠 Other Property	🔴 Fire Area	● Repair Needed
● Unimproved Landing Area (1)	🚰 Water Tank	🌲 US Forest Service	● No Repair Needed
● Helispot (1)	🔥 Uncontrolled Fire Edge	🏠 Private	● Unknown
Ⓜ Landing or Log Deck (2)	— Contained Line		— Repair Status Line
	— Completed Dozer Line		— Repair Needed
	— Completed Hand Line		



11/14/2020 2055
Datum: North American 1983



ID Page Name

- 1 Spencer Heights
- 2 Kiriakak
- 3 Crystal Lake
- 4 Bellaire Lake
- 5 Manhattan Creek
- 6 Glen Echo
- 7 Pingree Park Rd
- 8 Box Prairie
- 9 Paradise Park
- 10 Willow Patch Ln
- 11 Spruce Gulch
- 12 Cedar Springs Res.
- 13 Galuchie Gulch
- 14 Triangle Mountain
- 15 North Cameron Peak
- 16 South Cameron Peak

County of Larimer, Bureau of Land Management, Esri, HERE, Garmin, USGS, NOAA, EPA, USDA, NPS