

Repair Lines on Private Land

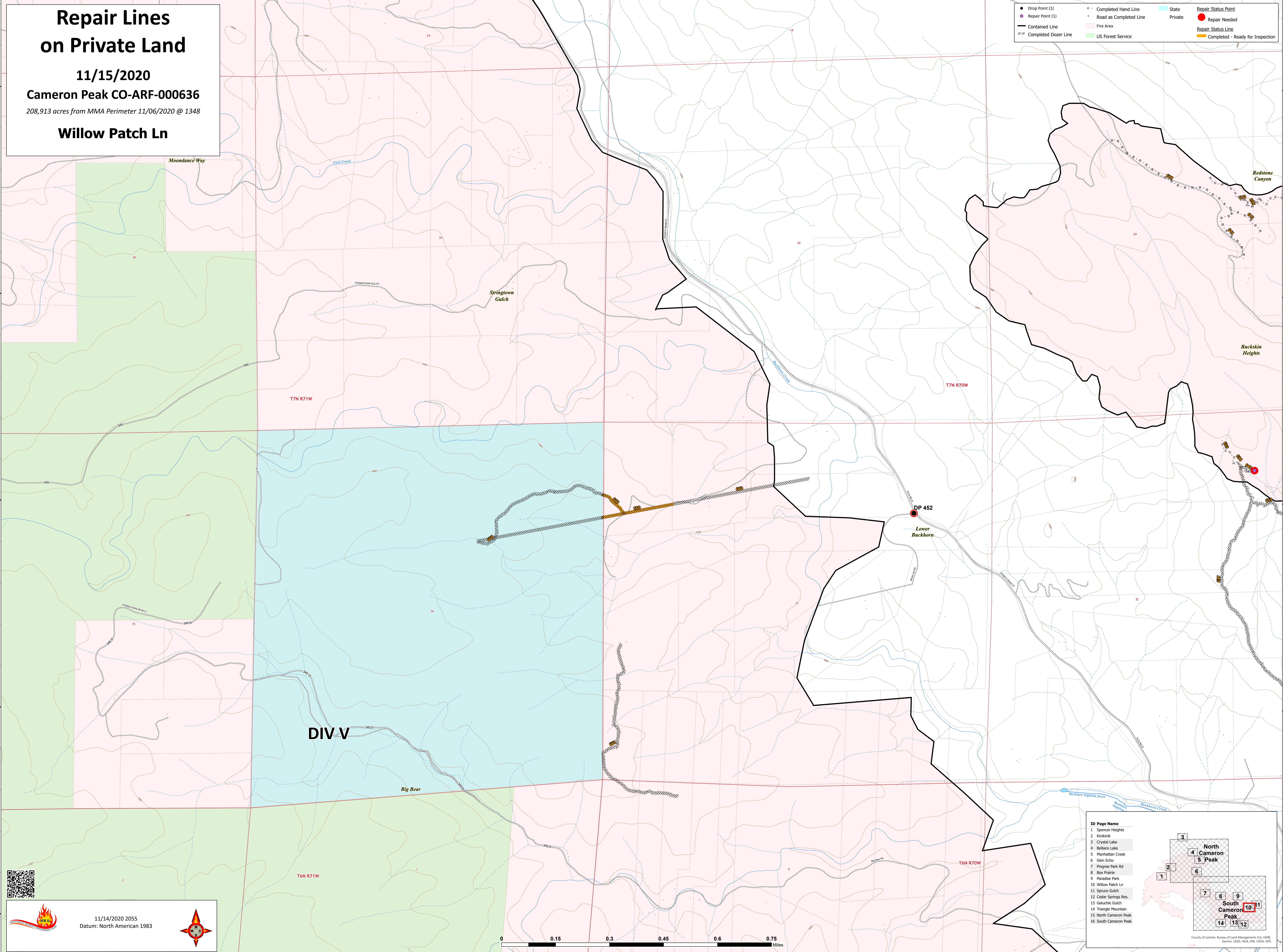
11/15/2020

Cameron Peak CO-ARF-000636

208,913 acres from MMA Perimeter 11/06/2020 @ 1348

Willow Patch Ln

● Drop Point (1)	--- Completed Hand Line	State	● Repair Status Point
● Repair Point (1)	--- Road as Completed Line	Private	● Repair Needed
--- Contained Line	--- Fire Area		--- Repair Status Line
--- Completed Dozer Line	US Forest Service		--- Completed - Ready for Inspection



11/14/2020 2055
Datum: North American 1983

ID Page Name

1	Spencer Heights
2	Kirklinak
3	Crystal Lake
4	Bellaire Lake
5	Manhattan Creek
6	Glen Echo
7	Pingree Park Rd
8	Box Prairie
9	Paradise Park
10	Willow Patch Ln
11	Spruce Gulch
12	Cedar Springs Res.
13	Galuchie Gulch
14	Triangle Mountain
15	North Cameron Peak
16	South Cameron Peak

County of Larimer, Bureau of Land Management, Esri, HERE, Garmin, USGS, NOAA, EPA, USDA, NPS