

Repair Lines on Private Land

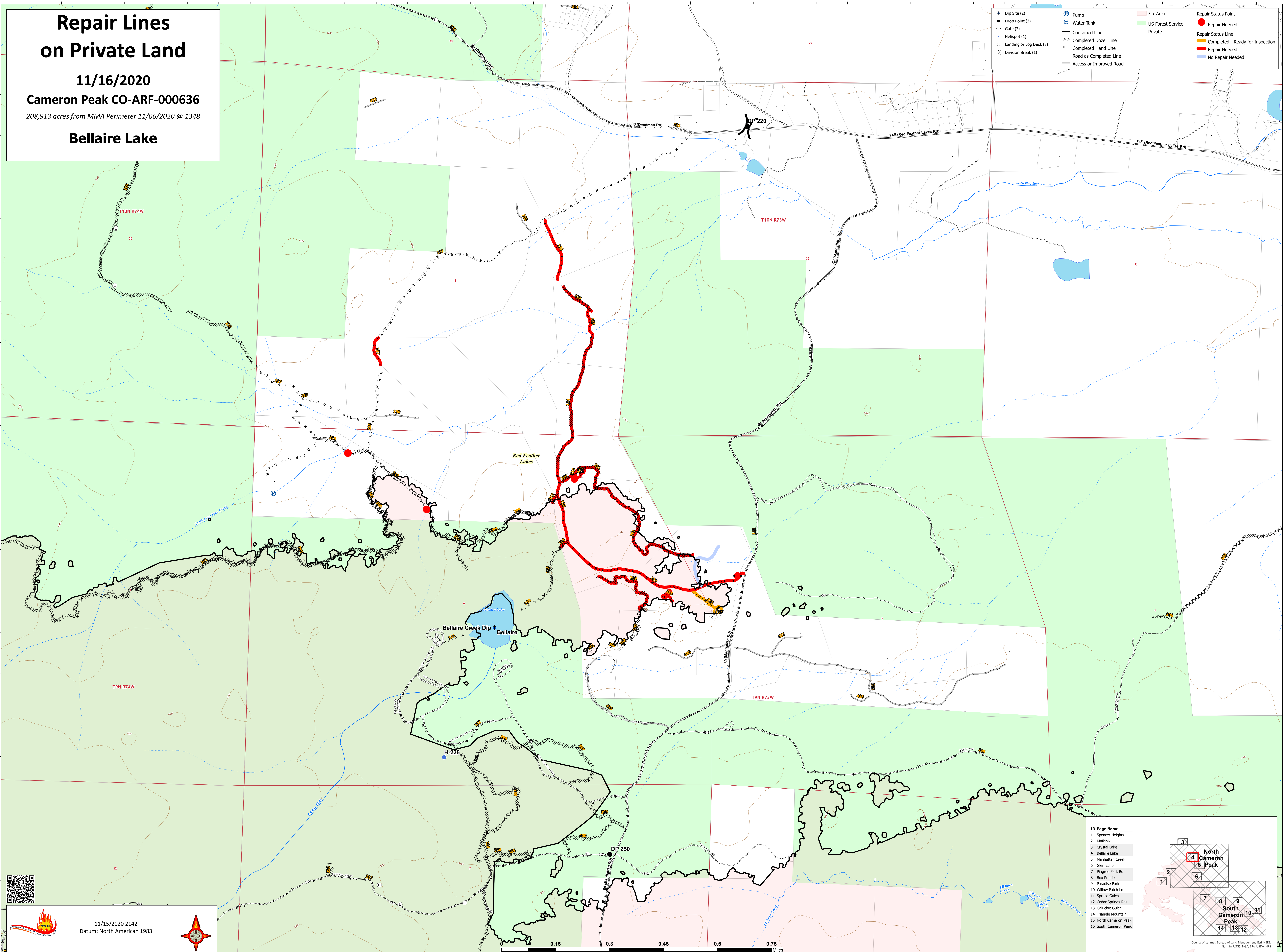


11/16/2020

Cameron Peak CO-ARF-000636


208,913 acres from MMA Perimeter 11/06/2020 @ 1348

Bellaire Lake

● Dip Site (2)	⊕ Pump	■ Fire Area	● Repair Status Point
● Drop Point (2)	⊕ Water Tank	■ US Forest Service	● Repair Needed
⋯ Gate (2)	— Contained Line	■ Private	— Repair Status Line
● Helispot (1)	⊕ Completed Dozer Line		● Completed - Ready for Inspection
⊕ Landing or Log Deck (8)	⊕ Completed Hand Line		● Repair Needed
X Division Break (1)	— Road as Completed Line		● No Repair Needed
	— Access or Improved Road		

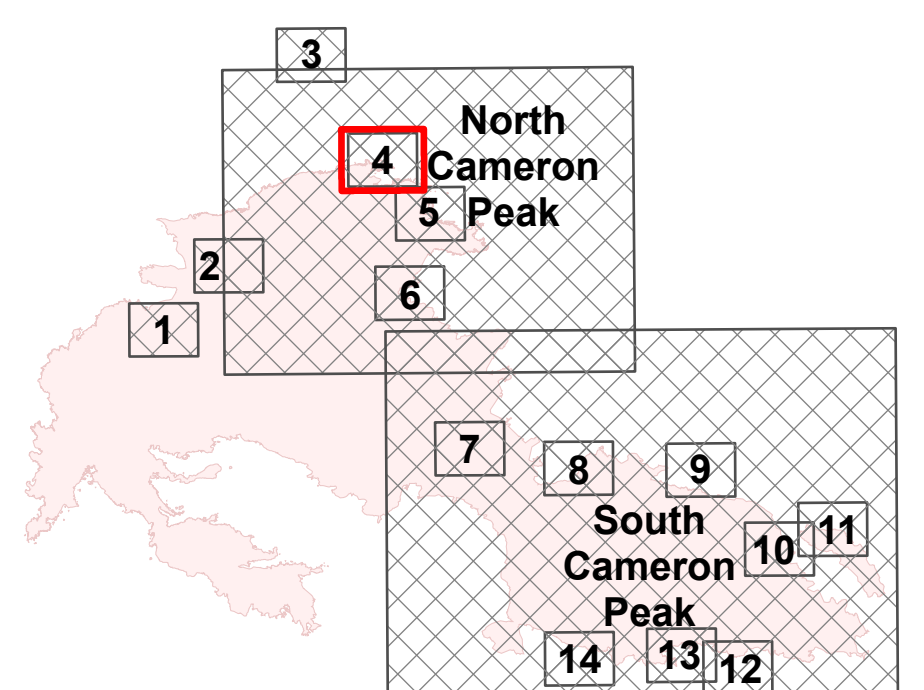




11/15/2020 2142
Datum: North American 1983




ID Page Name

- Spencer Heights
- Kirkland
- Crystal Lake
- Bellaire Lake
- Manhattan Creek
- Glen Echo
- Pingree Park Rd
- Box Prairie
- Paradise Park
- Willow Patch Ln
- Spruce Gulch
- Cedar Springs Res.
- Galuchie Gulch
- Triangle Mountain
- North Cameron Peak
- South Cameron Peak



County of Larimer, Bureau of Land Management, Esri, HERE, Garmin, USGS, NOAA, EPA, USDA, NPS