

Repair Lines on Private Land

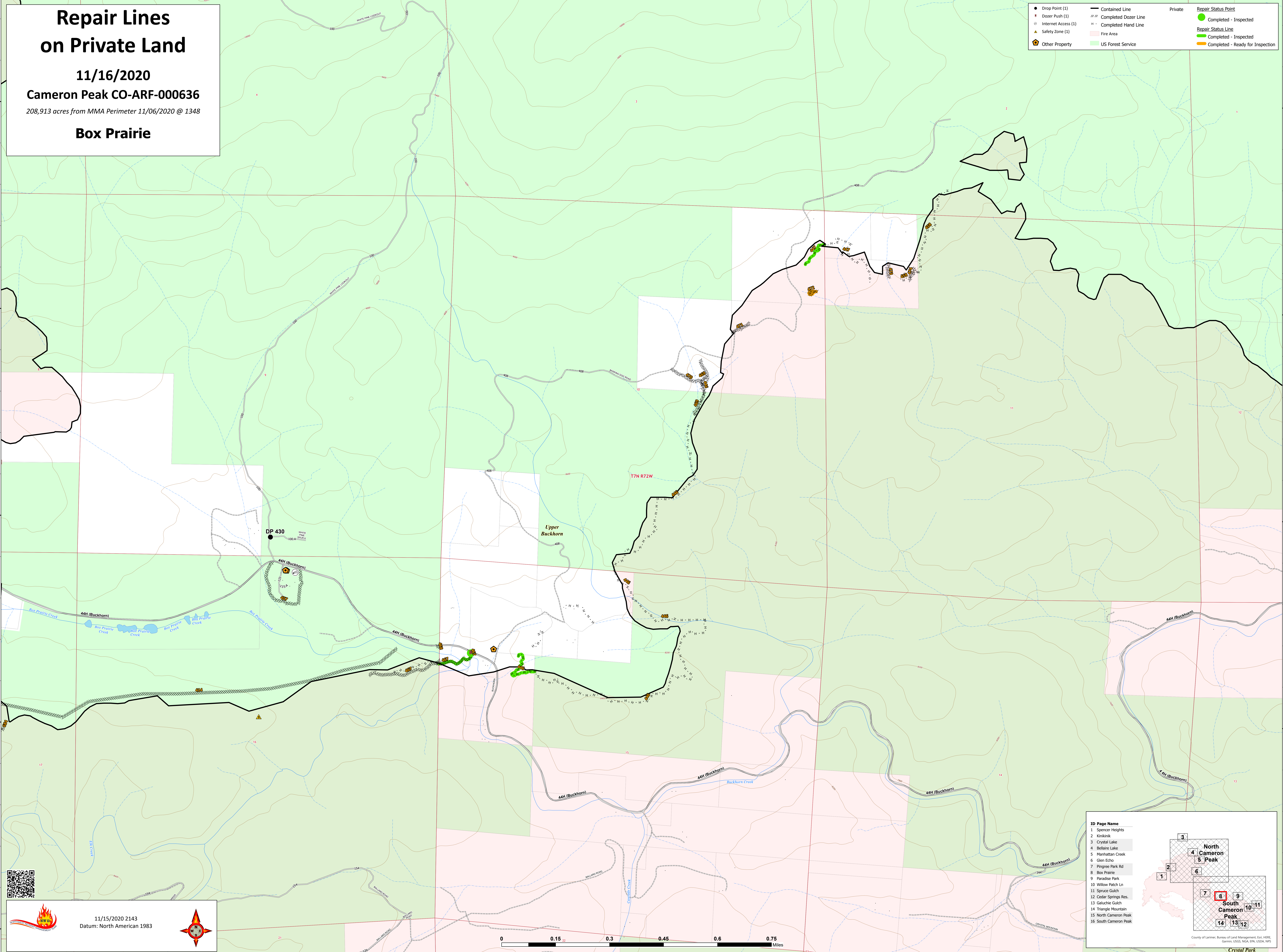
11/16/2020

Cameron Peak CO-ARF-000636

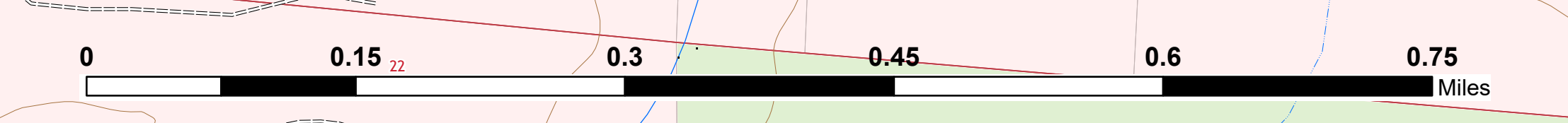
208,913 acres from MMA Perimeter 11/06/2020 @ 1348

Box Prairie

● Drop Point (1)	— Contained Line	Private	● Repair Status Point
■ Dozer Push (1)	--- Completed Dozer Line		● Completed - Inspected
○ Internet Access (1)	- - - Completed Hand Line		● Repair Status Line
▲ Safety Zone (1)	■ Fire Area		● Completed - Inspected
🏠 Other Property	■ US Forest Service		● Completed - Ready for Inspection



11/15/2020 2143
Datum: North American 1983



ID Page Name

- Spencer Heights
- Kivirikak
- Crystal Lake
- Bellaire Lake
- Manhattan Creek
- Glen Echo
- Pingree Park Rd
- Box Prairie
- Paradise Park
- Willow Patch Ln
- Spruce Gulch
- Cedar Springs Res.
- Galuchie Gulch
- Triangle Mountain
- North Cameron Peak
- South Cameron Peak

County of Larimer, Bureau of Land Management, GIS, HERE, Garmin, USGS, NOAA, EPA, USDA, NPS

Crystal Park