

Repair Lines on Private Land

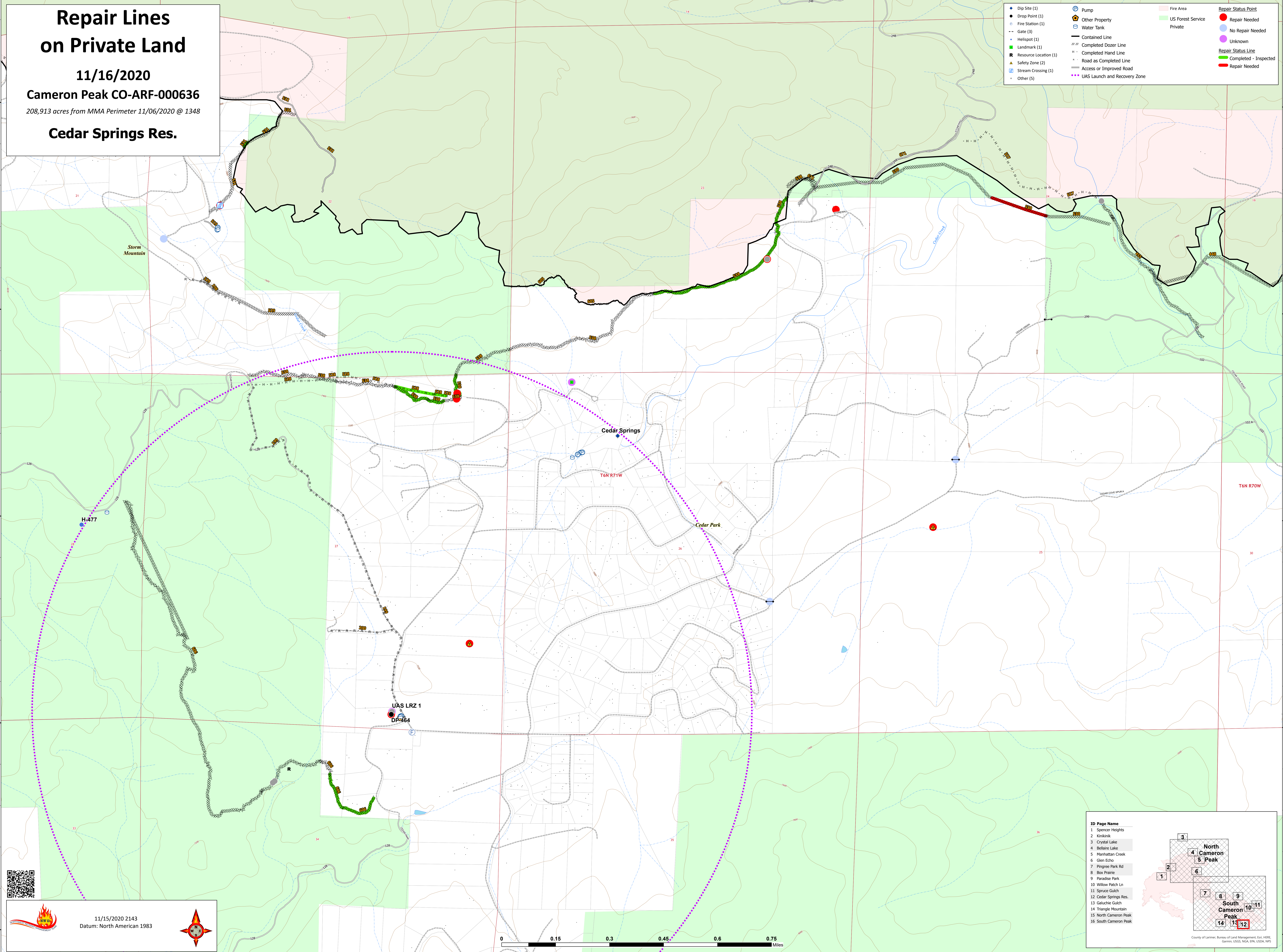
11/16/2020

Cameron Peak CO-ARF-000636

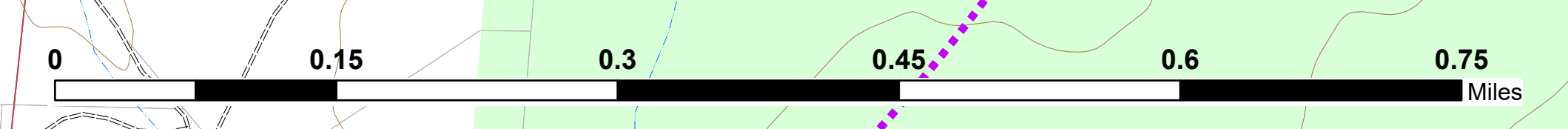
208,913 acres from MMA Perimeter 11/06/2020 @ 1348

Cedar Springs Res.

● Dip Site (1)	⊕ Pump	■ Fire Area	● Repair Status Point
● Drop Point (1)	🏠 Other Property	■ US Forest Service	● No Repair Needed
● Fire Station (1)	🚰 Water Tank	■ Private	● Unknown
--- Gate (3)	— Contained Line		— Repair Status Line
● Helispot (1)	— Completed Dozer Line		— Completed - Inspected
● Landmark (1)	— Completed Hand Line		— Repair Needed
■ Resource Location (1)	— Road as Completed Line		
▲ Safety Zone (2)	— Access or Improved Road		
🚰 Stream Crossing (1)	— UAS Launch and Recovery Zone		
● Other (5)			



11/15/2020 2143
Datum: North American 1983



ID Page Name

1	Spencer Heights
2	Kirkbrack
3	Crystal Lake
4	Bellaire Lake
5	Manhattan Creek
6	Glen Echo
7	Pingree Park Rd
8	Box Prairie
9	Paradise Park
10	Willow Patch Ln
11	Spruce Gulch
12	Cedar Springs Res.
13	Galuchie Gulch
14	Triangle Mountain
15	North Cameron Peak
16	South Cameron Peak

County of Larimer, Bureau of Land Management, Esri, HERE, Garmin, USGS, NOAA, EPA, USDA, NPS