

# Repair Lines on Private Land

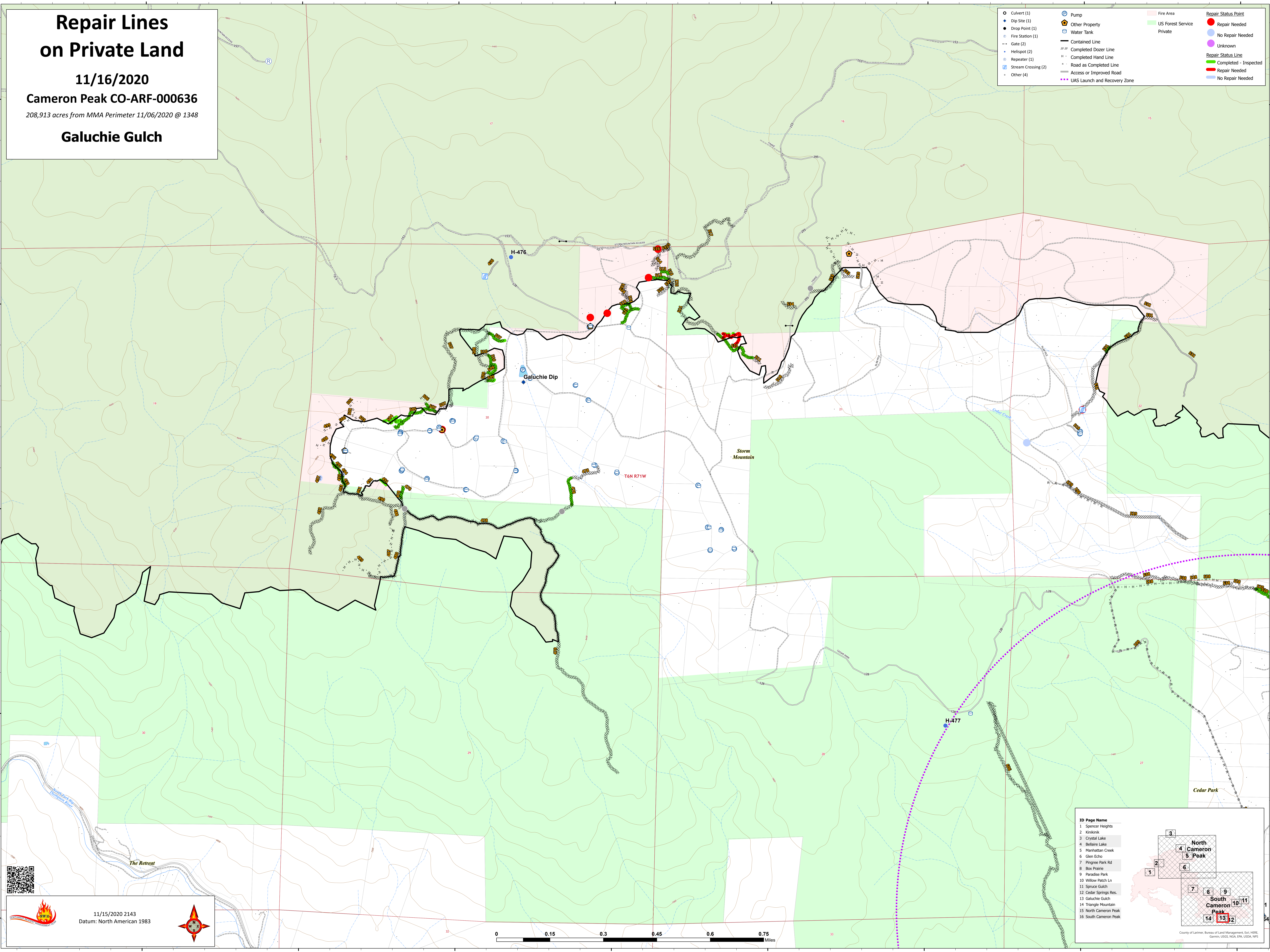

11/16/2020

Cameron Peak CO-ARF-000636


208,913 acres from MMA Perimeter 11/06/2020 @ 1348

## Galuchie Gulch

○ Culvert (1)	⊕ Pump	■ Fire Area	● Repair Status Point
● Dip Site (1)	🏠 Other Property	■ US Forest Service	● Repair Needed
● Drop Point (1)	🛢️ Water Tank	■ Private	● No Repair Needed
● Fire Station (1)	— Contained Line		● Unknown
--- Gate (2)	— Completed Dozer Line		— Repair Status Line
● Helispot (2)	— Completed Hand Line		— Completed - Inspected
● Repeater (1)	— Road as Completed Line		— Repair Needed
🛢️ Stream Crossing (2)	— Access or Improved Road		— No Repair Needed
● Other (4)	— UAS Launch and Recovery Zone		

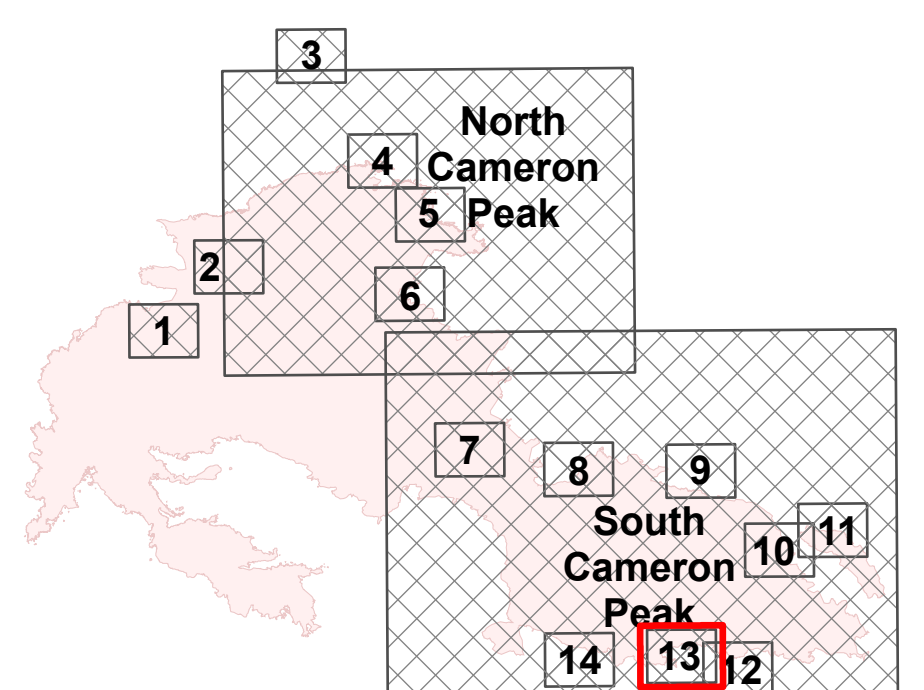



11/15/2020 2143  
Datum: North American 1983




**ID Page Name**

- Spencer Heights
- Kristlak
- Crystal Lake
- Bellare Lake
- Manhattan Creek
- Glen Echo
- Pingree Park Rd
- Box Prairie
- Paradise Park
- Willow Patch Ln
- Spruce Gulch
- Cedar Springs Res.
- Galuchie Gulch
- Triangle Mountain
- North Cameron Peak
- South Cameron Peak



County of Larimer, Bureau of Land Management, GIS, HERE, Garmin, USGS, NOAA, EPA, USDA, NPS