

Repair Lines on Private Land

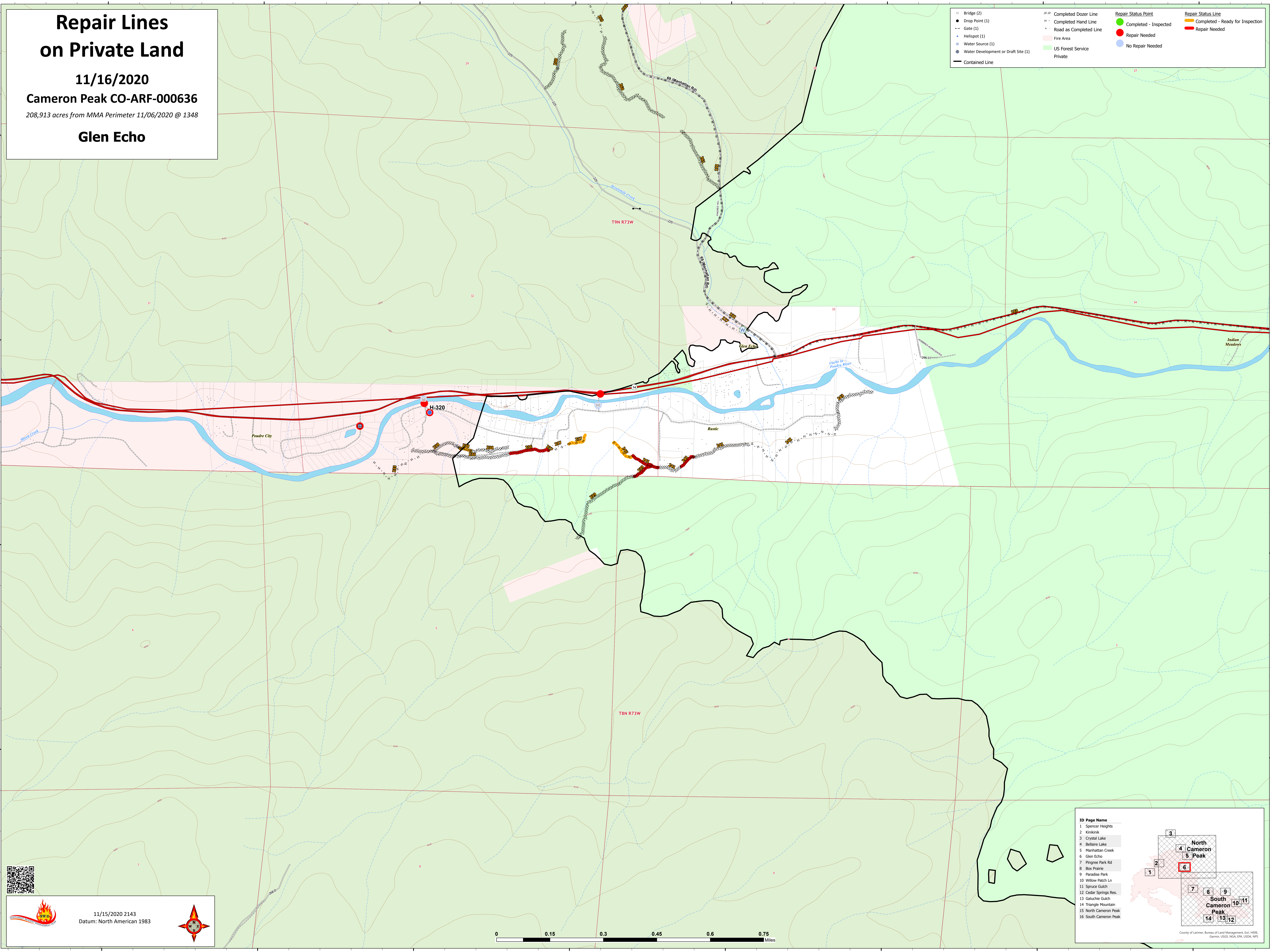
11/16/2020

Cameron Peak CO-ARF-000636

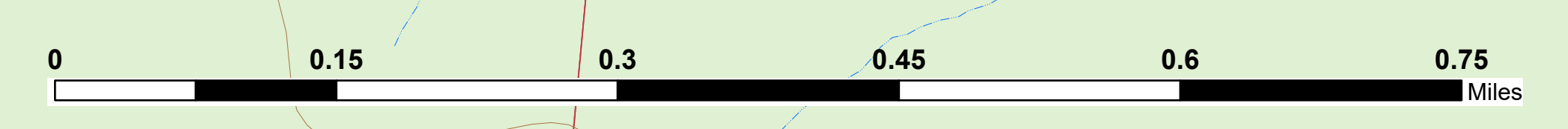
208,913 acres from MMA Perimeter 11/06/2020 @ 1348

Glen Echo

Bridge (2)	Completed Dozer Line	Repair Status Point	Repair Status Line
Drop Point (1)	Completed Hand Line	Completed - Inspected	Completed - Ready for Inspection
Gate (1)	Road as Completed Line	Repair Needed	Repair Needed
Helispot (1)	Fire Area	No Repair Needed	
Water Source (1)	US Forest Service Private		
Water Development or Draft Site (1)			
Contained Line			



11/15/2020 2143
Datum: North American 1983



ID Page Name

- Spencer Heights
- Kristiak
- Crystal Lake
- Bellaire Lake
- Manhattan Creek
- Glen Echo
- Pingree Park Rd
- Box Prairie
- Paradise Park
- Willow Patch Ln
- Spruce Gulch
- Cedar Springs Res.
- Galuchie Gulch
- Triangle Mountain
- North Cameron Peak
- South Cameron Peak

County of Larimer, Bureau of Land Management, Esri, HERE, Garmin, USGS, NSA, ERI, USDA, NPS