

Repair Lines on Private Land

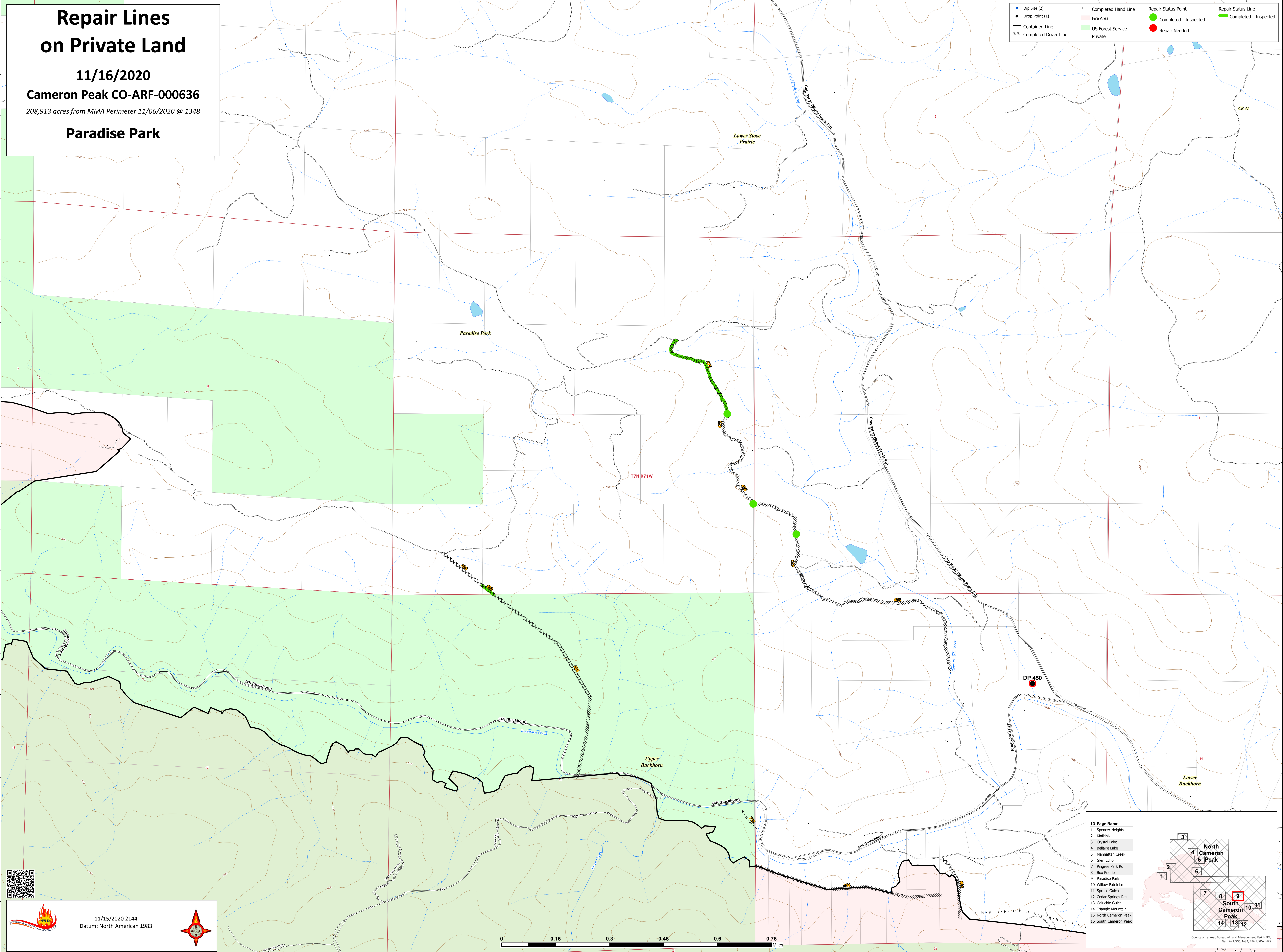
11/16/2020

Cameron Peak CO-ARF-000636

208,913 acres from MMA Perimeter 11/06/2020 @ 1348

Paradise Park

● Dip Site (2)	--- Completed Hand Line	● Repair Status Point	--- Repair Status Line
● Drop Point (1)	■ Fire Area	● Completed - Inspected	--- Completed - Inspected
— Contained Line	■ US Forest Service Private	● Repair Needed	
--- Completed Dozer Line			



11/15/2020 2144
Datum: North American 1983

ID Page Name

- Spencer Heights
- Khrilak
- Crystal Lake
- Bellaire Lake
- Manhattan Creek
- Glen Echo
- Pingree Park Rd
- Box Prairie
- Paradise Park
- Willow Patch Ln
- Spruce Gulch
- Cedar Springs Res.
- Galuchie Gulch
- Triangle Mountain
- North Cameron Peak
- South Cameron Peak

County of Larimer, Bureau of Land Management, GSI, HERE, Garmin, USGS, NOAA, EPA, USDA, NPS