

Repair Lines on Private Land

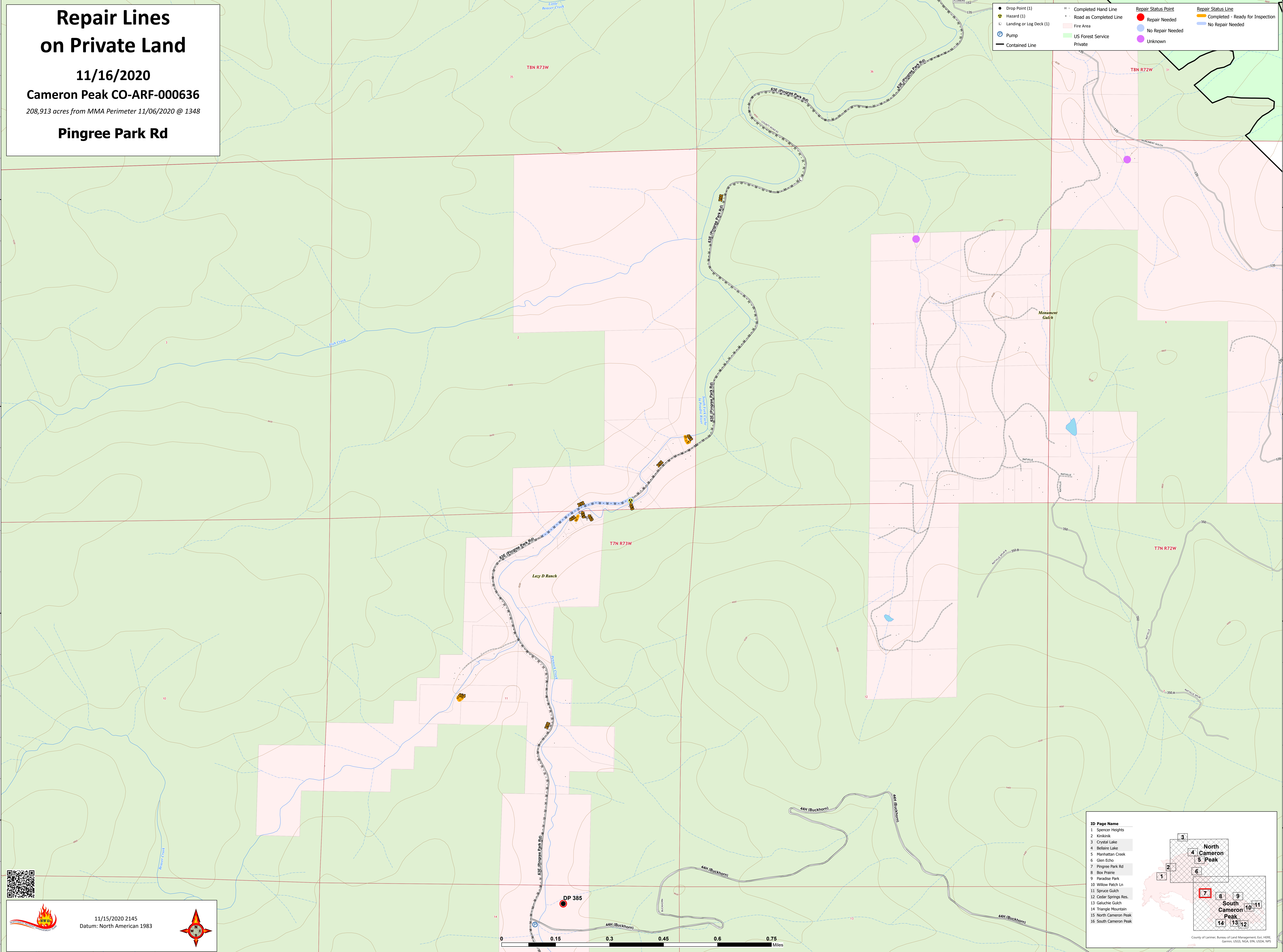
11/16/2020

Cameron Peak CO-ARF-000636

208,913 acres from MMA Perimeter 11/06/2020 @ 1348

Pingree Park Rd

● Drop Point (1)	— Completed Hand Line	● Repair Status Point	— Repair Status Line
▲ Hazard (1)	— Road as Completed Line	● Repair Needed	— Completed - Ready for Inspection
Ⓛ Landing or Log Deck (1)	— Fire Area	● No Repair Needed	— No Repair Needed
⊕ Pump	— US Forest Service	● Unknown	
— Contained Line	— Private		



11/15/2020 2145
Datum: North American 1983

ID Page Name

- Spencer Heights
- Kiriakak
- Crystal Lake
- Bellaire Lake
- Manhattan Creek
- Glen Echo
- Pingree Park Rd
- Box Prairie
- Paradise Park
- Willow Patch Ln
- Spruce Gulch
- Galuchie Gulch
- Triangle Mountain
- North Cameron Peak
- South Cameron Peak

County of Larimer, Bureau of Land Management, Esri, HERE, Garmin, USGS, NOAA, EPA, USDA, NPS