

Repair Lines on Private Land

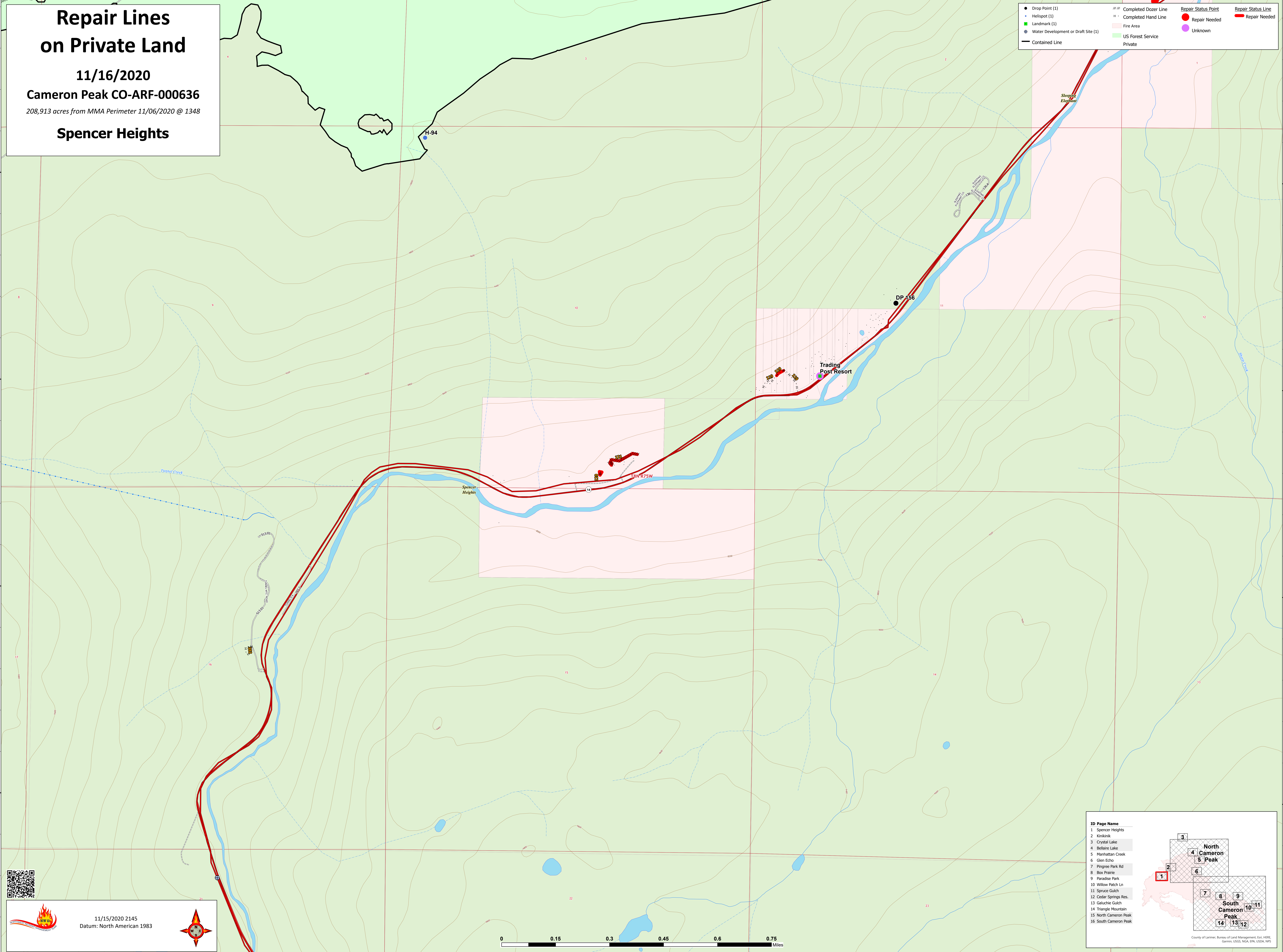
11/16/2020

Cameron Peak CO-ARF-000636

208,913 acres from MMA Perimeter 11/06/2020 @ 1348

Spencer Heights

● Drop Point (1)	--- Completed Dozer Line	● Repair Status Point	--- Repair Status Line
● HeliSpot (1)	--- Completed Hand Line	● Repair Needed	--- Repair Needed
■ Landmark (1)	■ Fire Area	● Unknown	
⊙ Water Development or Draft Site (1)	■ US Forest Service		
— Contained Line	■ Private		



11/15/2020 2145
Datum: North American 1983



ID Page Name

- Spencer Heights
- Kiriakak
- Crystal Lake
- Bellaire Lake
- Manhattan Creek
- Glen Echo
- Pingree Park Rd
- Box Prairie
- Paradise Park
- Willow Patch Ln
- Spruce Gulch
- Cedar Springs Res.
- Galuchie Gulch
- Triangle Mountain
- North Cameron Peak
- South Cameron Peak

County of Larimer, Bureau of Land Management, GIS, HERE, Garmin, USGS, NOAA, EPA, USDA, NPS